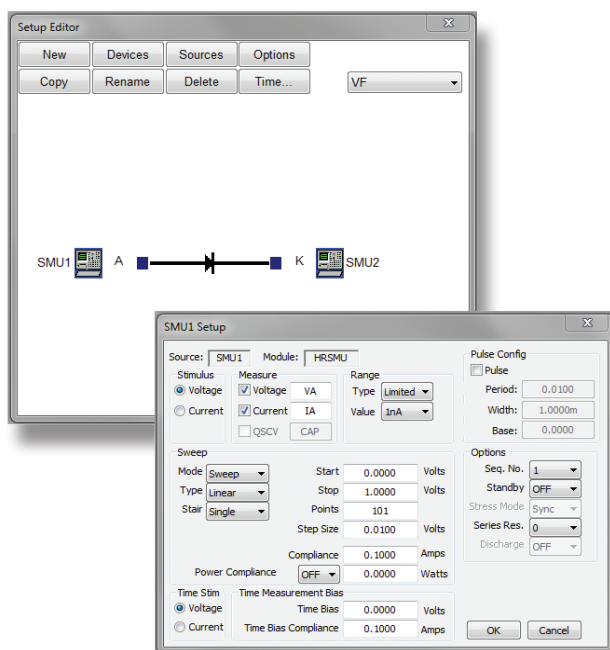


Point. Click. Measure. *It's as simple as that.*

Automate Your HP4156 or HP4155

Metrics Win4156™ provides new life for your HP4156A/B/C, or HP4155A/B/C parameter analyzer. This product provides PC-based control of the instrument which results in data being collected directly to the computer. Data can be further analyzed using the built-in plotting and parameter extraction tools.

Metrics Win4156 allows laboratories to extract additional useful life out of their equipment as well as streamline the effort required to transfer data to other PC-based tools or corporate data systems.



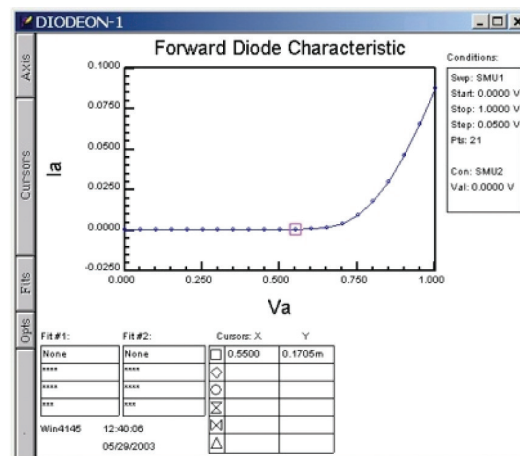
Rapid Development

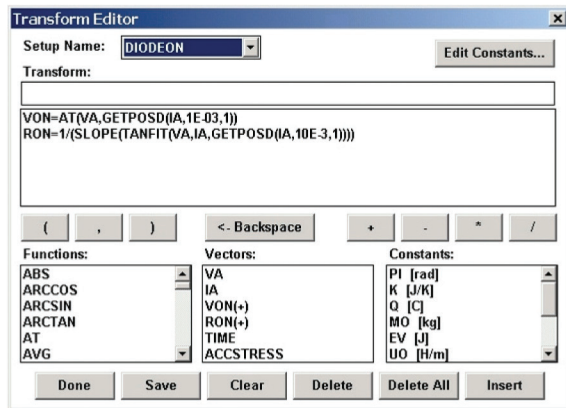
Metrics Win4156 provides a point-and-click Windows interface for the rapid creation of tests.

Win4156's graphical tools allow for the complete replacement of front-panel control of the HP4156.

Graphical Tools

Metrics Win4156 includes plot tools for the visualization of measured data. Data can be grouped for presentation on the same axis. In addition graphical line-fit tools are provided for analysis of the data. The resulting plots can be printed or copied out to the Windows clipboard for movement into other applications.



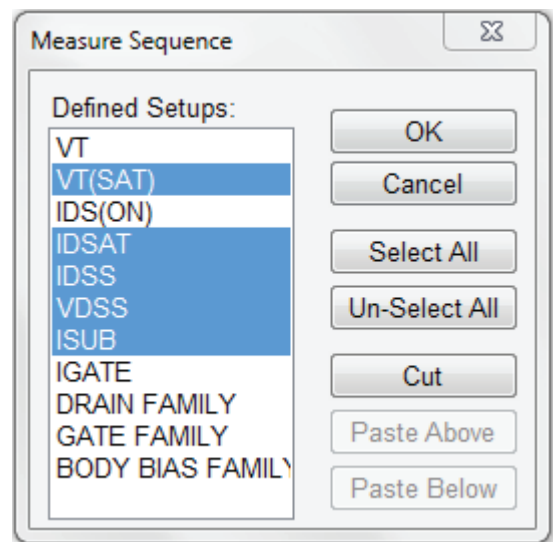


Numerical Transform Editor

Specify additional analysis functions using the built-in numerical transform editor to apply lists of equations to the measured data. Included are common numerical operators, line fitting, user-defined constants as well as other specialized functions specific to extracting parameters for semiconductor characteristics.

Test Sequence Execution

Metrics Win4156 also contains a sequencing tool that allows a series of tests to be run automatically. This function when combined with the parameter extraction and plotting capability makes Win4156 a powerful tool for the collection and analysis of data using the HP4156 or HP4155.



MINIMUM SYSTEM REQUIREMENTS

3 GHz Pentium 4-class Processor (or equivalent)
 1 GB RAM
 Microsoft Windows 10 Professional, 32-bit or 64-bit
 500 Mbyte available for product installation, plus additional 10 GB capacity for test data
 2 USB port (Security Dongle, USB->GPIB supported interfaces)
 SXGA Monitor (1280 x 1024) minimum resolution
 Ethernet – LXI (TCP/IP) interface support

One of the following GPIB cards and the listed software:

PCI

NI GPIB-PCI NI-488.2 Software version 20.0 or newer
 Keysight 82350 B/C IO Libraries Suite 2020 or newer

USB NI

GPIB-USB-HS/HS+ NI-488.2 Software version 20.0 or newer
 Keysight 82357 B IO Libraries Suite 2020 or newer

License

- All Licenses are single system licenses
- Includes 90 days of technical support via email.

For more information:

www.metricstech.com or
 (505) 761-9630