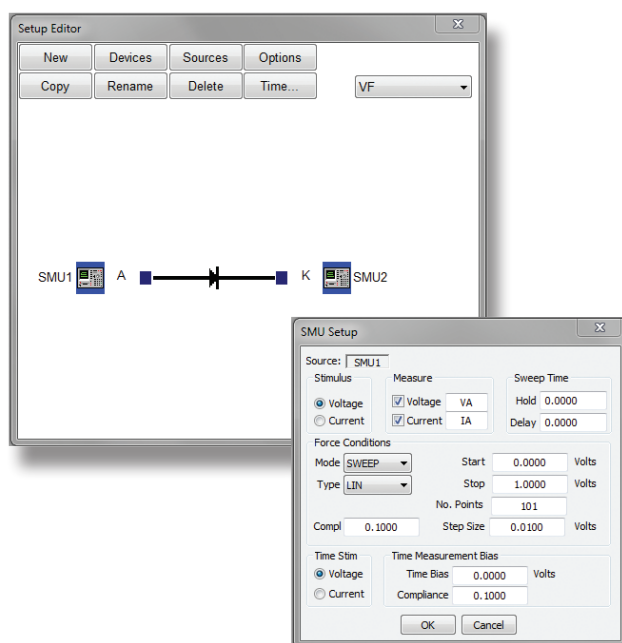


Point. Click. Measure. *It's as simple as that.*

Automate Your HP4145

Metrics Win4145™ provides new life for your HP4145A or HP4145B parameter analyzer. This product provides PC-based control of the instrument which results in data being collected directly to the computer. Data can be further analyzed using the built-in plotting and parameter extraction tools.

Metrics Win4145 allows laboratories to extract additional useful life out of their equipment as well as streamline the effort required to transfer data to other PC-based tools or corporate data systems.



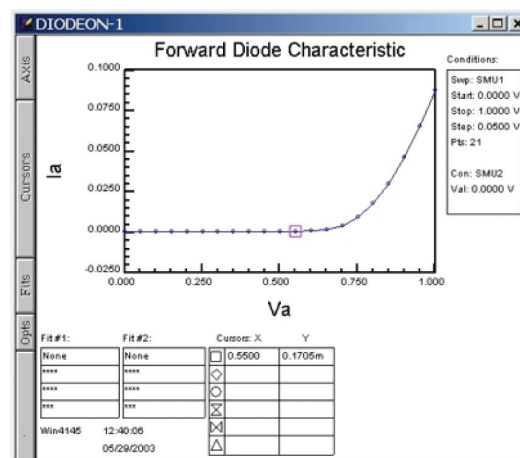
Rapid Development

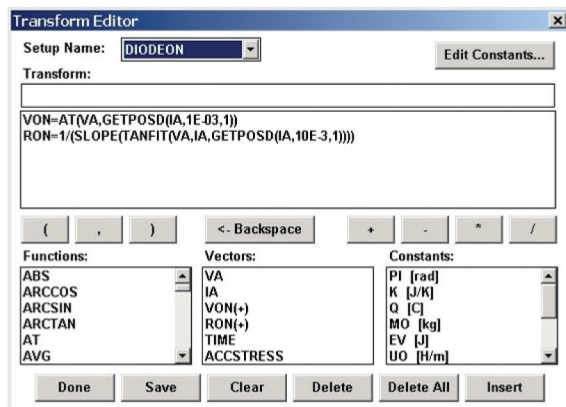
Metrics Win4145 provides a point-and-click Windows interface for the rapid creation of tests.

Win4145's graphical tools allow for the complete replacement of front-panel control of the HP4145.

Graphical Tools

Metrics Win4145 includes plot tools for the visualization of measured data. Data can be grouped for presentation on the same axis. In addition graphical line-fit tools are provided for analysis of the data. The resulting plots can be printed or copied out to the Windows clipboard for movement into other applications.



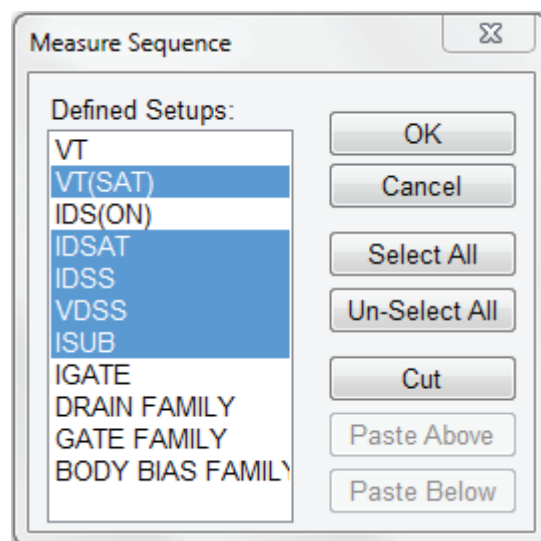


Numerical Transform Editor

Specify additional analysis functions using the built-in numerical transform editor to apply lists of equations to the measured data. Included are common numerical operators, line fitting, user-defined constants as well as other specialized functions specific to extracting parameters for semiconductor characteristics.

Test Sequence Execution

Metrics Win4I45 also contains a sequencing tool that allows a series of tests to be run automatically. This function when combined with the parameter extraction and plotting capability makes Win4I45 a powerful tool for the collection and analysis of data using the HP4145.



GPIB Support

Agilent Technologies
82350 B/C, 82357 B

National Instruments
PCI-GPIB, USB-GPIB-HS/B

*Please see our website for more details, including the latest supported versions of the GPIB software.

System Requirements

- 3 GHz Pentium 4-class Processor (or equivalent)
- Windows 7 or 10 Professional, 32-bit or 64-bit
- 1 GB RAM
- 500 Mbyte available for product installation, plus additional 10 GB capacity for test data
- 2 USB port (Security Dongle, USB->GPIB supported interfaces)
- CD-ROM drive
- Supported GPIB interface card
- Microsoft Internet Explorer 11.0 or greater

License

- All Licenses are single system licenses
- Includes 90 days of technical support via email.

For more information:

**www.metricstech.com or
(505) 761-9630**