



# **IDE - Integrated Developer Environment Digital Download Installation Guide**

**Metrics IDE**

**Version 4.5**

# Table of Contents

Installing the IDE Software .....	3
Obtain a Codeword and Install Key.....	3
Important Note for upgrading Customers.....	3
Procedure to Install IDE.....	4
Metrics Codewords .....	9
Software Codeword Information .....	9
Enter the Metrics IDE Codeword Serial number:.....	10

# Installation and Configuration

## Installing the IDE Software

The installation program for the Metrics IDE software installs all components necessary to run Metrics IDE algorithms. You can download the auto-extracting archive **MTIDE-45.EXE** from the Metrics Technology website under the Downloads link and MTICV product ID. You will need a valid customer login to enter the Software Downloads area.

### *Obtain a Codeword and Install Key*

This codeword is obtained by registering your software with Metrics Technology. Please visit our website at [www.metricstech.com](http://www.metricstech.com) to register your software and obtain the codeword and an install key required to install Metrics IDE product.

### *Important Note for upgrading Customers*

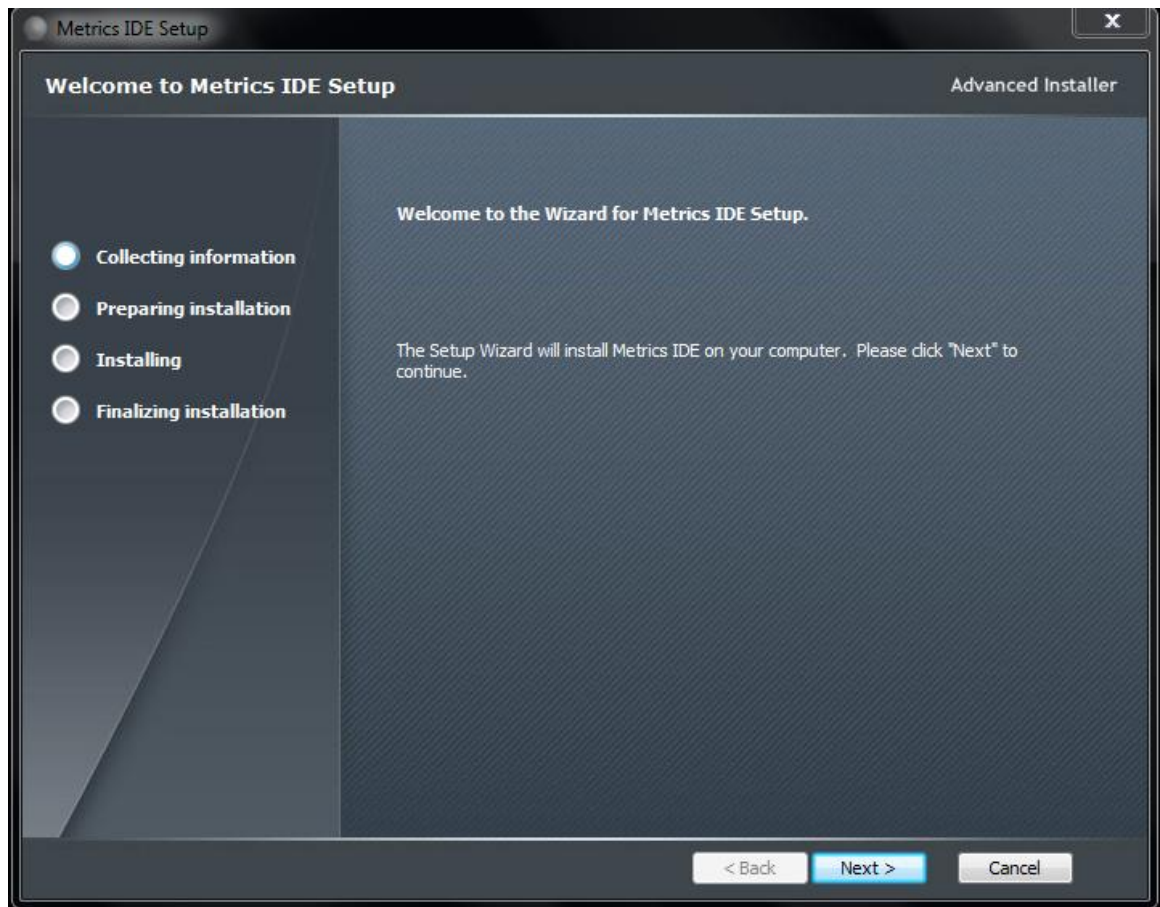
**NOTE:** The Metrics IDE setup program requires that you backup and uninstall the previous versions of your algorithms. Please make a backup copy of you Metrics\algs directory before installing the IDE upgrade.

Older versions of the PGU library and NVM library files are now provided in source code format and have been modified to be version-less. These files are installed in the windows file system under Metrics\libs directory. Existing tests should change the #import for these directives and then saved in the Metrics\algs directory. A complete list of any deprecated features is contained in the Metrics ICV "Software Migration Guide". You must install Metrics ICV 4.5 before installation of the IDE.

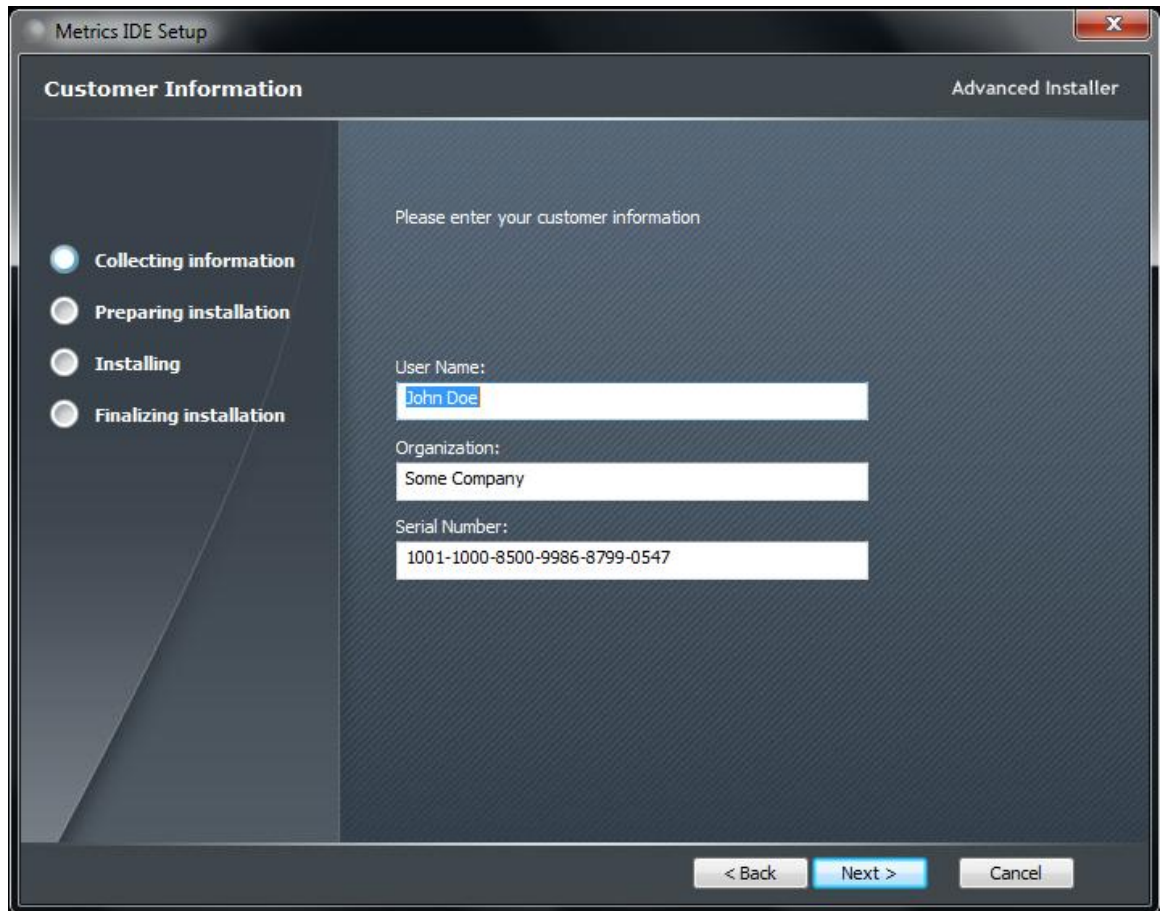
**NOTE:** You should also download the latest available hot fix release which can be found in the same software list and designated MTIDE-45-HFXX.EXE where the XX is the version of the hot fix. Hot fixes contain resolutions to any reported issues and some enhancements that have been added since the initial release of Metrics ICV 4.5. It is only necessary to apply the latest hot fix to your system since all updates are contained in the latest build. Save the hot fix file to your local computer and you will be can install it after the base Metrics ICV installation is complete.

## *Procedure to Install IDE*

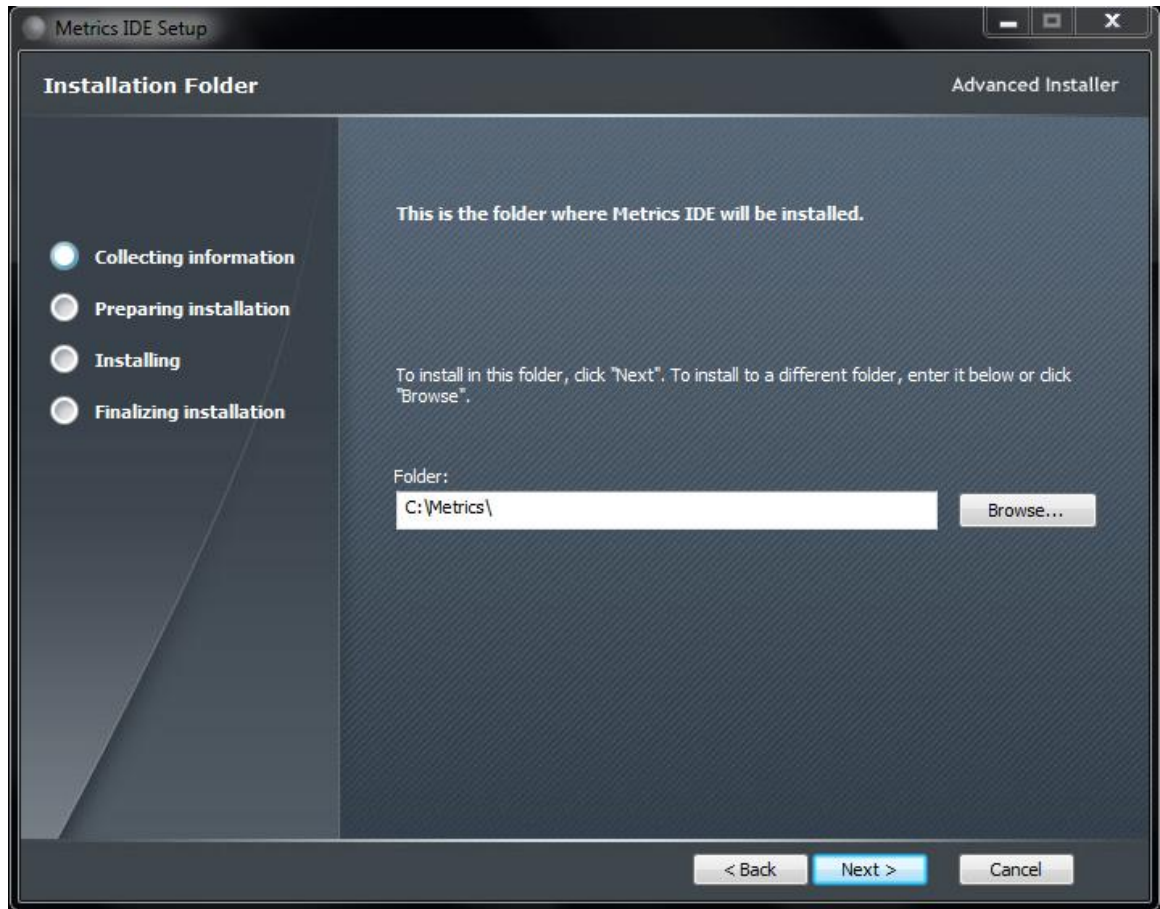
1. Download the Metrics IDE installer MTIDE-45.EXE to the hard drive of your computer.
2. Select the **MTIDE-45.exe** application icon to start the installation program.



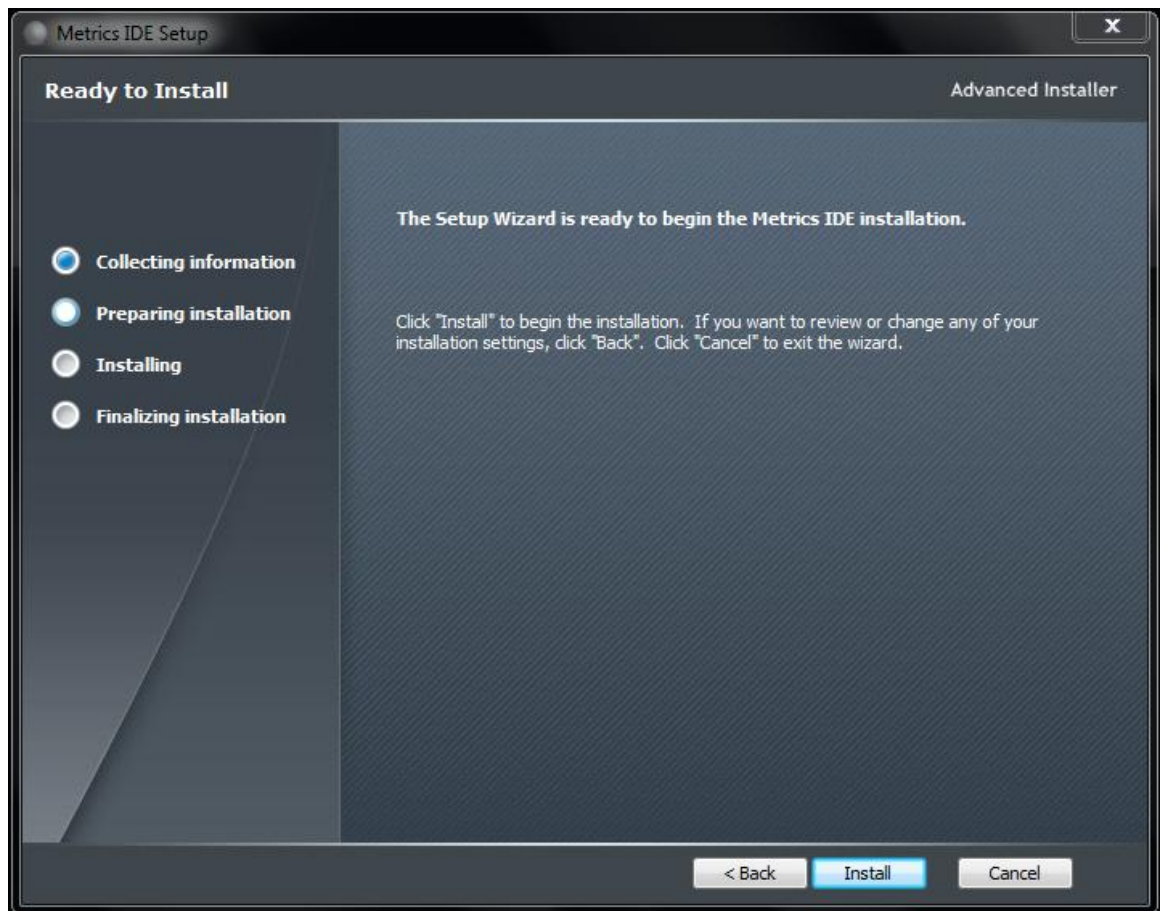
3. Click **Next** button on the "Welcome" panel



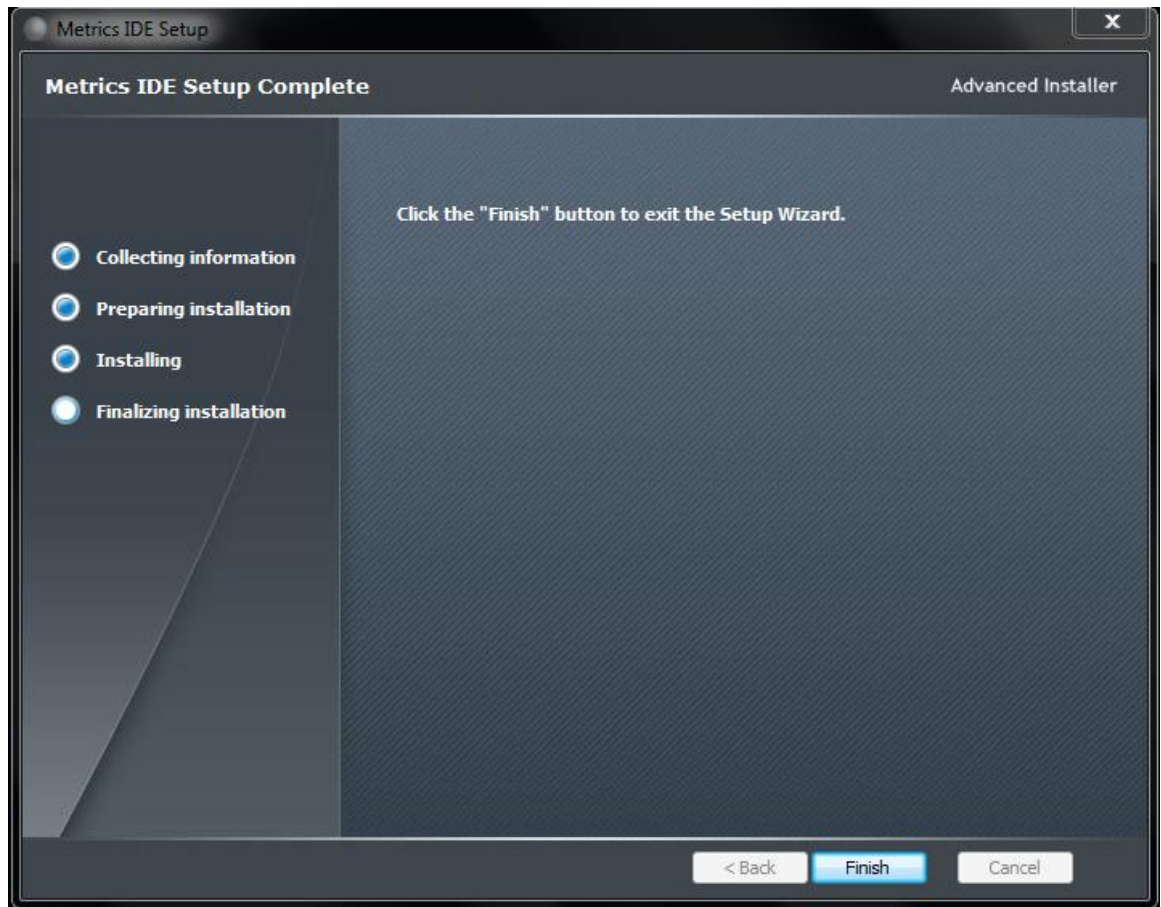
4. Enter the Username, Company and installation key provided by Metrics Customer Service. Then click **Next**.



5. Choose "destination location" for installation and click the **Next** button



6. Click the **Install** button to begin the Metrics IDE installation



7. Then click **Finish** to complete the installation

# Metrics Codewords

Metrics Technology software products use a combination Node Locked license model which includes the generation of a hardware fingerprint for the workstation PC and a Codeword. The unique combination of a Codeword and license.v2c file allows the software product to be run on a single workstation PC for which the license has been activated.

## *Software Codeword Information*

There will be a codeword for each software component ordered. This information is made up of two (2) parts, the Registration Information and Codeword Information. We encourage all customers to register their software with Metrics Technology. Only registered users will receive technical support for their products.

### *Customer ID*

---

The Customer ID is a number that has the form IAXXXXXA. Where the X is a number. Variations include IHXXXXA, MHXXXXA, and MKXXXXA. This number must match the number on the Security Key.

### *Product Desc*

---

This is the Product Description. This will be the name of the product, such as Metrics IDE.

### *Product ID*

---

The product ID is MTCP and should be entered in the ID field

### *Version*

---

This is the version of the software i.e. 4.5.0

**Note:** The version number and the codeword are matched. Thus, customers who have not purchased an upgrade will not be able to run it without purchasing the correct codeword.

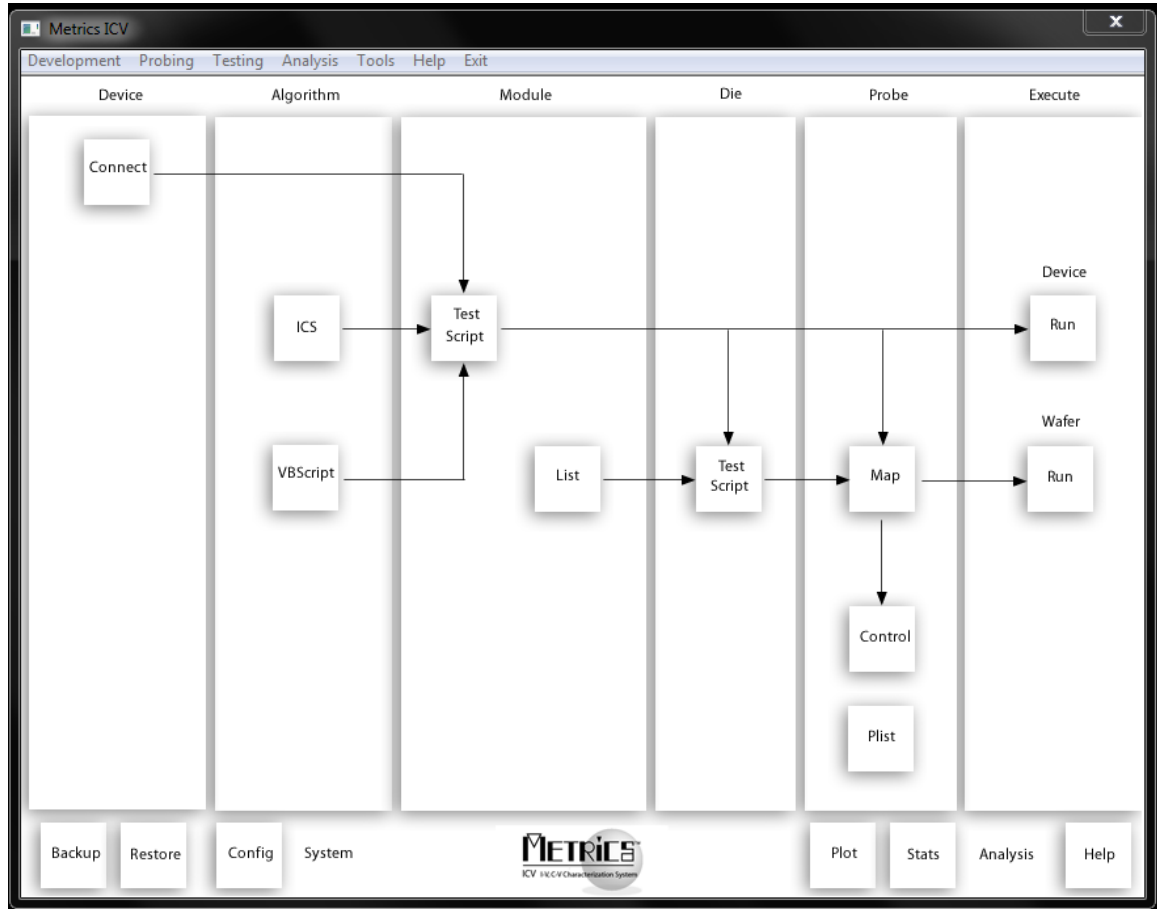
### *Codeword Serial*

---

AYJE6-AKXMP-HXGCK-HMK4R-I2HAB-U3AT6

**Note:** The software Codeword Serial number for IDE should be entered in the MTICV application.

### ***Enter the Metrics IDE Codeword Serial number:***

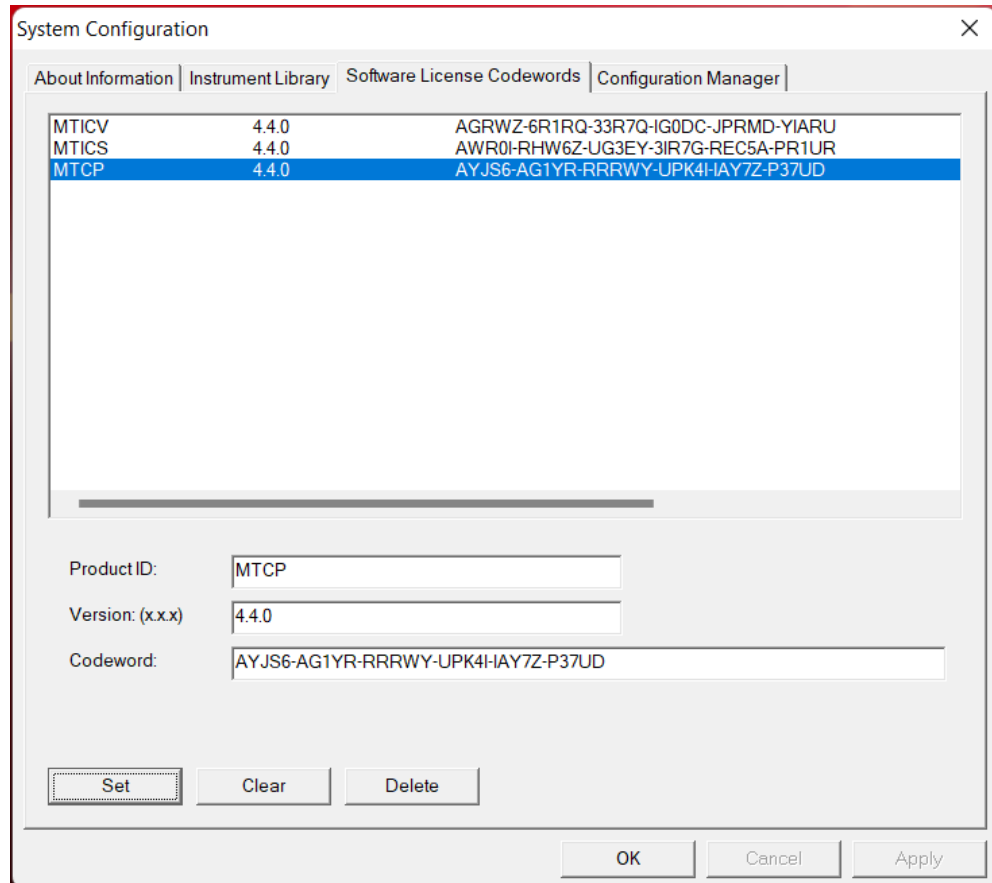


1. Start Metrics ICV to display the system window.
2. Open the *System Configuration* window by selecting **Tools » System Configuration** or click the **Config** button.
3. Click on the "Software License Codewords" tab

**Note:** This tab will open automatically if no codewords have ever been entered. You will receive a warning message to enter codewords the first time you start Metrics ICV. Please follow the instructions below to enter your codewords.

4. Enter the Product ID, Version, and Codeword supplied on the product registration e-mail.

**Note:** It is recommended that you cut and paste the codeword from the registration e-mail sent from Metrics Technology Customer Service. If typing the codeword from the keyboard be careful not to transpose letters or numbers. The letter I can be confused for the number 1 and the letter O can be mistaken for the number 0.



5. Enter the IDE codeword information.
6. Click **Set** button.
7. Click the **OK** button to close the System Configuration dialog.