



## **Digital Download Installation Guide**

**Metrics Win4156**

**Version 4.5**

# **Table of Contents**

Installing the Win4156 Software .....	3
Obtain a Codeword .....	3
Important Note for Customers upgrading .....	3
Procedure to Upgrade Win4156 from 4.0, 4.1, 4.2, 4.3 to 4.4.....	4
Procedure to Install Win4156 (new installation) .....	9
Metrics Codewords .....	16
Software Codeword Information .....	16
Entry of the Codeword Serial Number .....	17

# **Installation and Configuration**

## **Installing the Win4156 Software**

**Note:** Do not install the USB Security Key until after the Metrics Win4156 Software is installed and the PC is restarted. The security key requires special drivers that are installed with Win4156. Windows Hardware Manager should detect the USB Security Key as Safenet USB SuperPro/UltraPro and install the driver automatically.

The installation program for the Metrics Win4156 software installs all components necessary to run Metrics Win4156. You can download the auto-extracting archive MTW4156-44.EXE from the Metrics Technology website under Downloads link. Be sure to save the install file to your local hard disk before running the installation. Running the installation from the website will cause an installation error. You will need a valid customer login to enter the Software Downloads area.

**NOTE:** You should also download the latest available HotFix release which can be found in the same software list and designated MTW4156-44-HFXX.EXE where the XX is the version of the HotFix. HotFixes contain resolutions to any reported issues and some enhancements that have been added since the initial release of Metrics Win4156 4.4. It is only necessary to apply the latest HotFix to your system since all updates are contained in the latest build. Save the HotFix file to your local computer and you can install it after the base Metrics Win4156 installation is complete.

### ***Obtain a Codeword***

Please visit our website at [www.metricstech.com](http://www.metricstech.com) to register your software and obtain the codeword. The temporary or permanent codeword will be issued within 24 hours.

### ***Important Note for Customers upgrading***

The Metrics Win4156 setup program requires that you backup and uninstall the previous version. To do this, please perform the following steps:

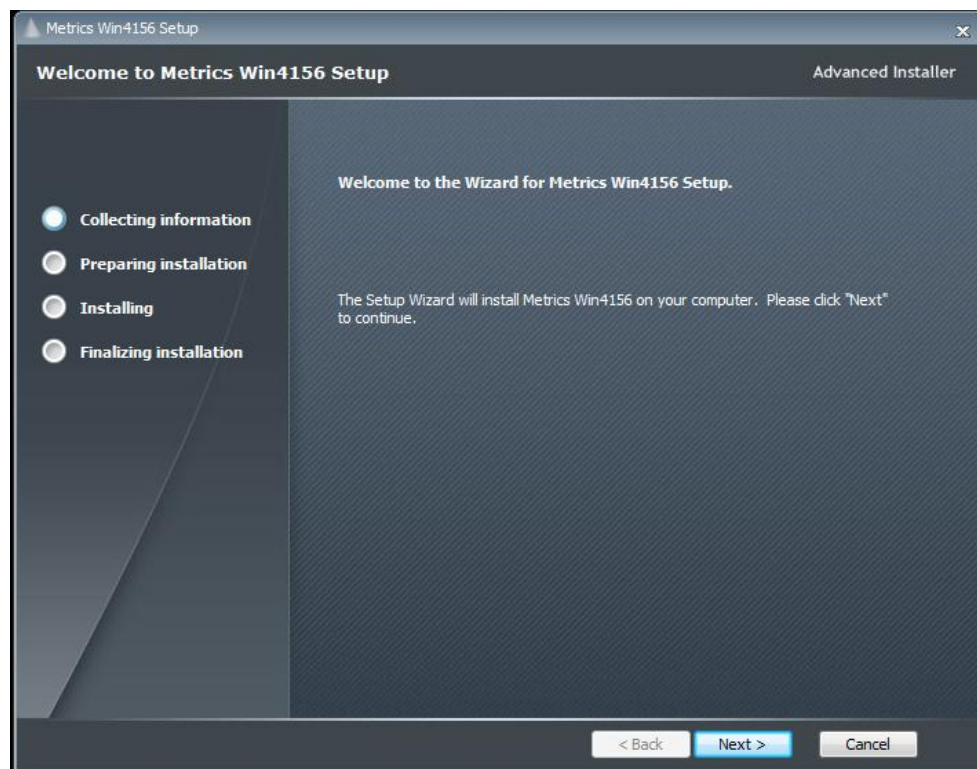
**DO NOT LEAVE YOUR BACKUP ARCHIVE IN THE METRICS DIRECTORY!  
COPY THE BACKUP.ZIP FILE TO A DIFFERENT LOCATION LIKE A USB DRIVE.**

1. Go to the File Menu and select Backup
2. Enter the name of the backup ZIP archive in the W4156 directory (i.e. C:\METRICS\W4156\backup.zip)
3. Allow the backup utility to complete then copy the .ZIP file to another drive location.

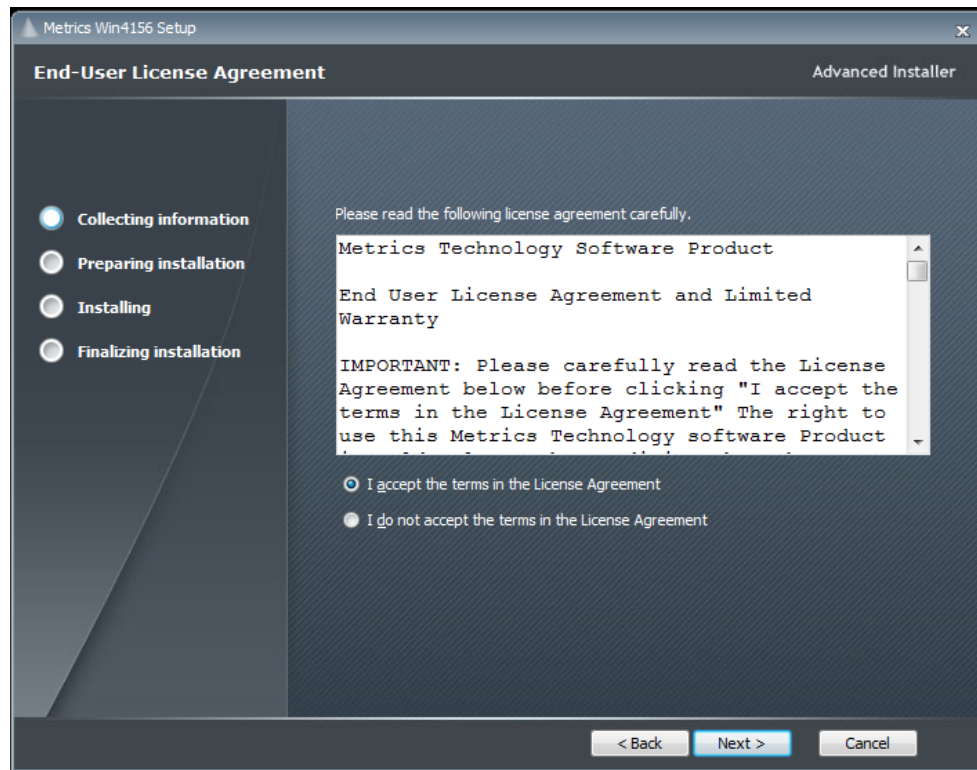
Metrics Win4156 files are now be stored in the windows file system. Existing tests should be opened and then saved in the Metrics\ics\projects directory.

## ***Procedure to Upgrade Win4156 from 4.x to 4.4***

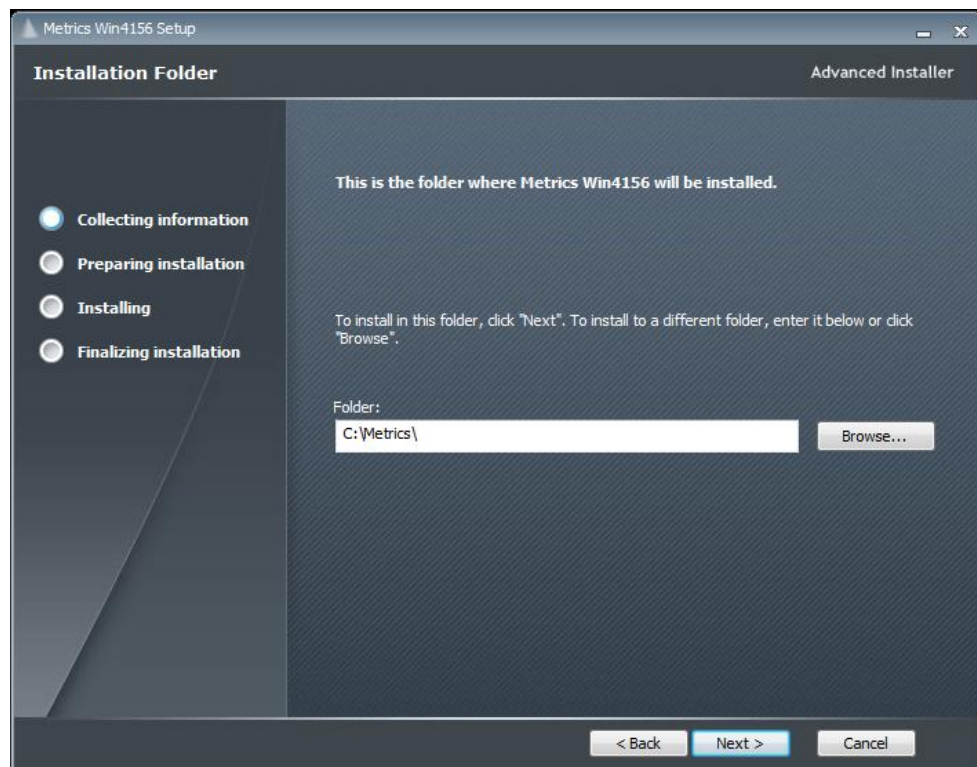
1. Download the Metrics Win4156 installer MTW4156-45.exe to hard drive of your computer.
2. Select the **MTW4156-45.exe** application icon to start the installation program.



3. Click **Next** button on the "Welcome" panel.

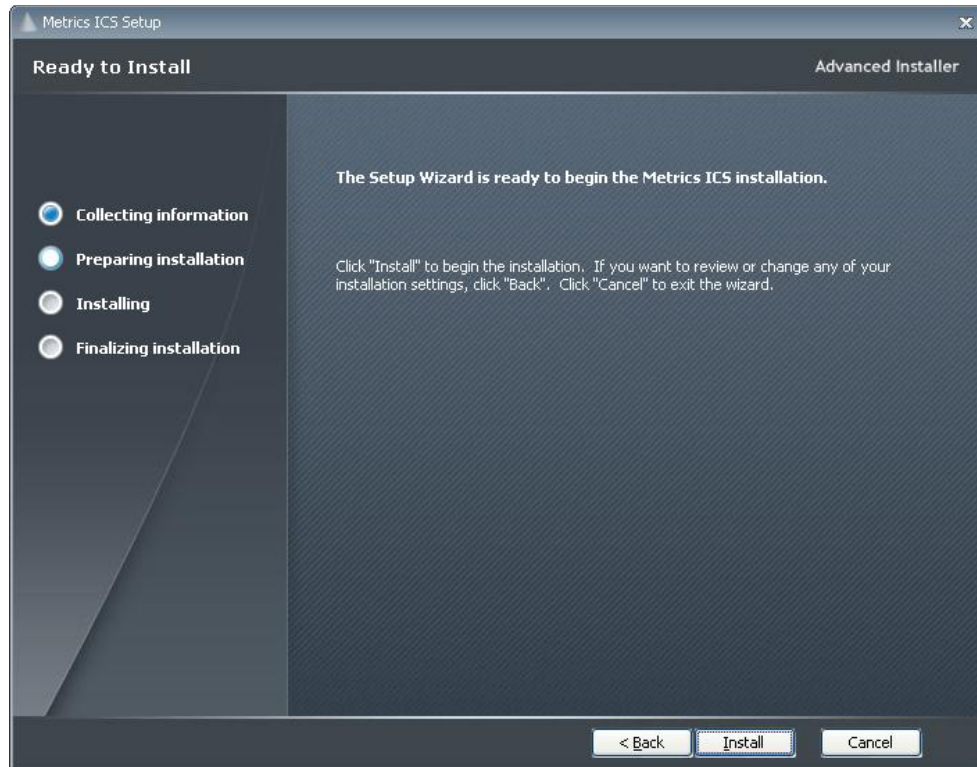


4. Read the "Software License Agreement" and click the **I agree to the terms in the License Agreement** button to agree to the terms. Then click **Next**.

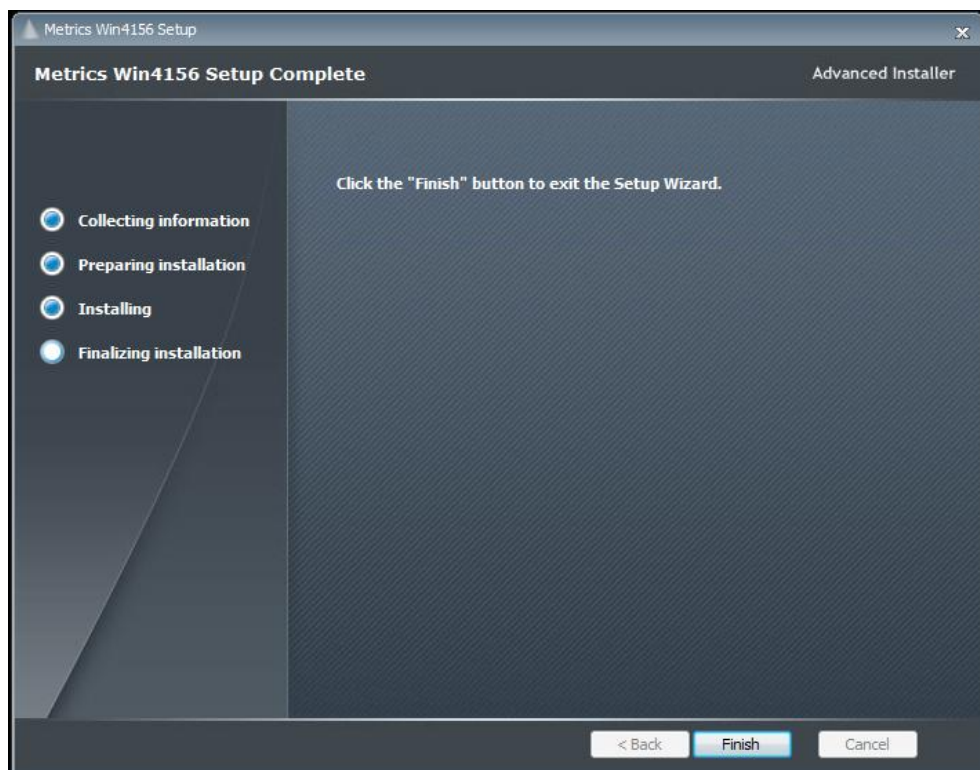
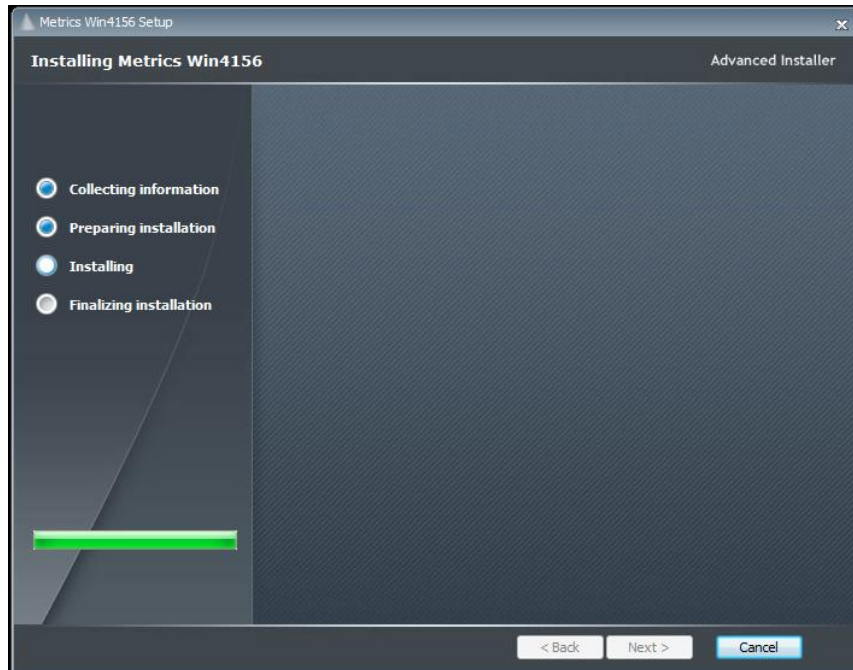


5. Choose "destination location" for installation and click the **Next** button.

**Note:** It is required to select the default C:\Metrics\ as the location to maintain compatibility with previous versions of the software backups.

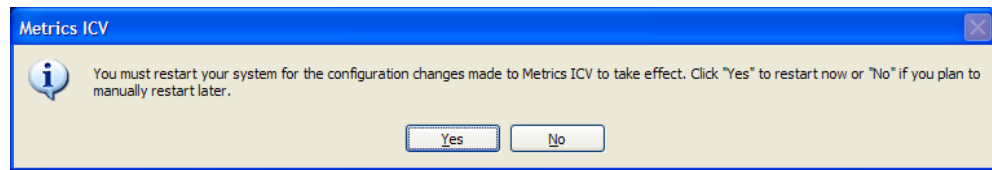


6. Allow the Metrics Win4156 installation to complete.



Then click **Finish** to complete the installation.

7. After the installation is finished, re-start the computer.

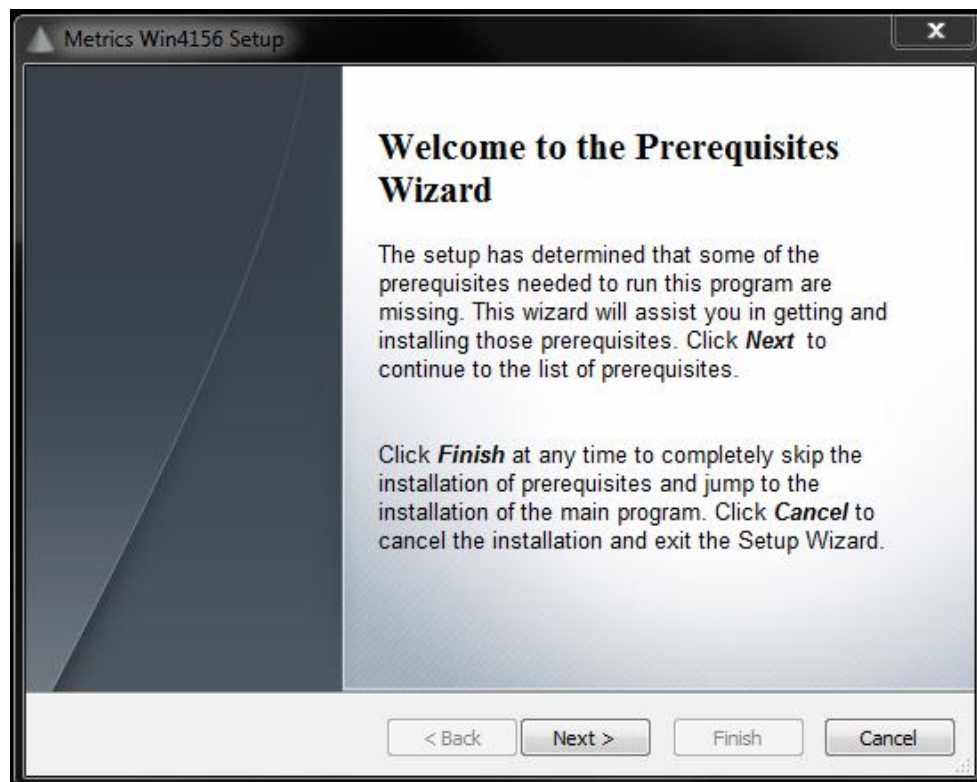




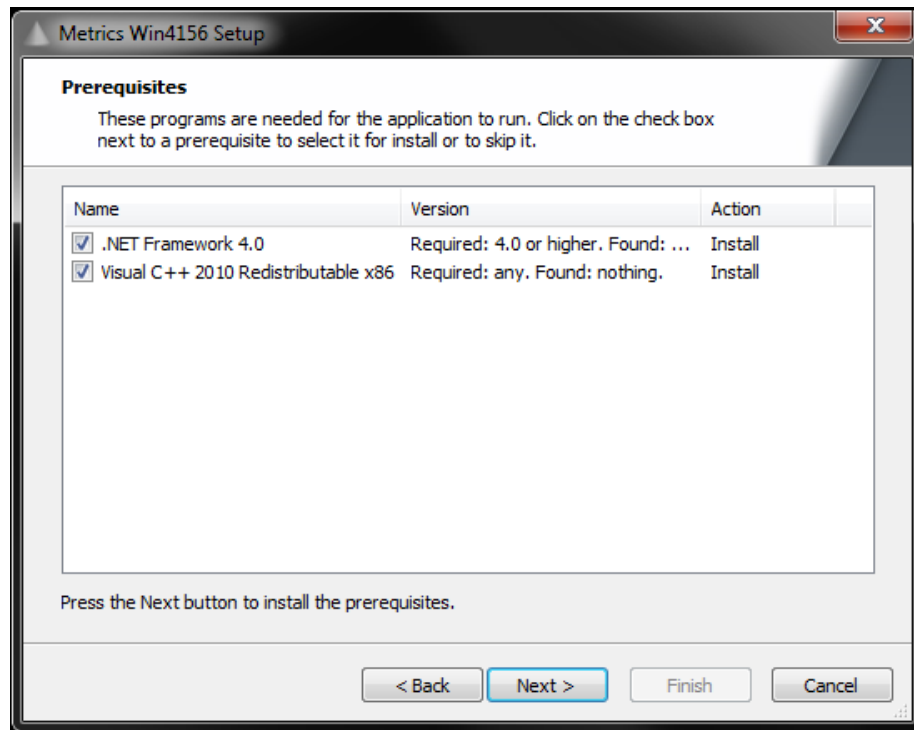
## ***Procedure to Install Win4156 (new installation)***

1. Download the Metrics Win4156 installer MTW4156-40.exe to hard drive of your computer.
2. Select the **MTW4156-40.exe** application icon to start the installation program.

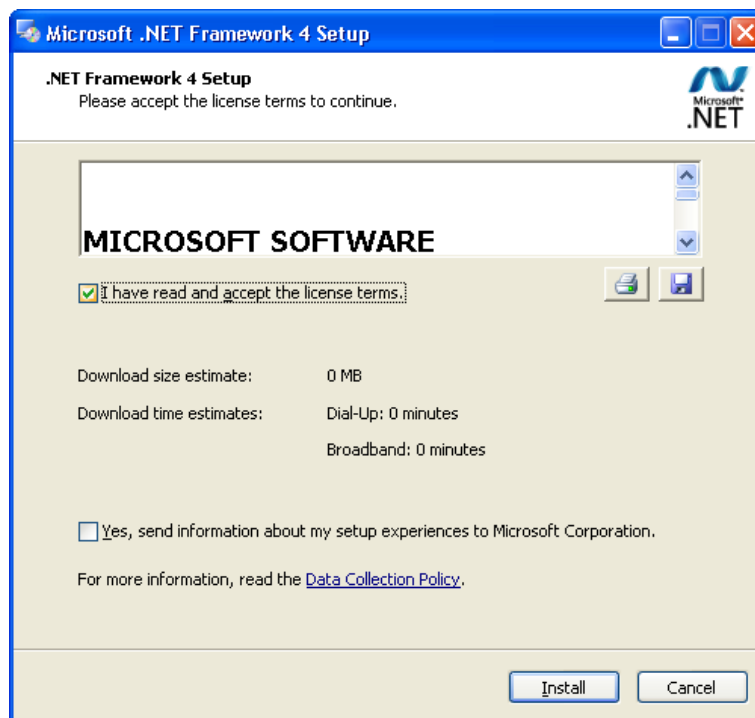
The installation will check for any prerequisites and start the Prerequisites Wizard to install the necessary software. Please note installation of some of these software components requires acceptance of the 3<sup>rd</sup> Party license agreements displayed during installation. Installation of some components can take some time so you should allow more time for installation if these components are not already installed on your workstation PC.



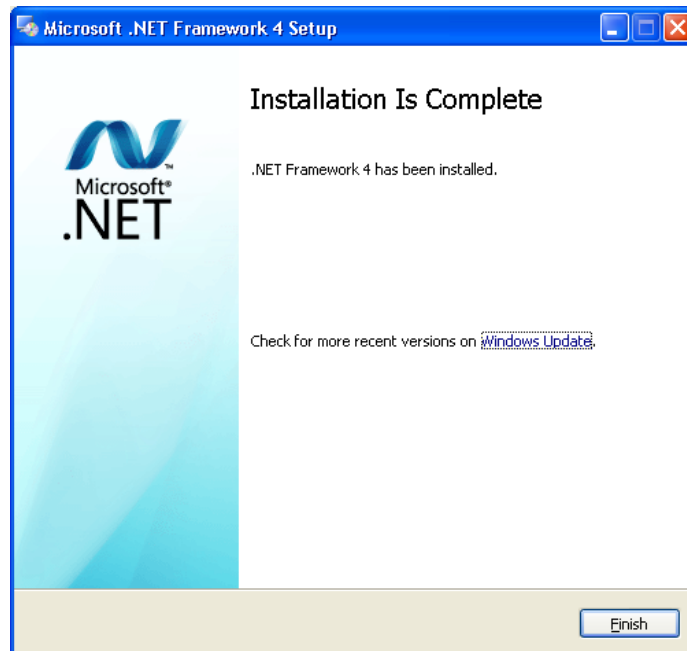
3. Click **Next** button on the "Welcome" panel.



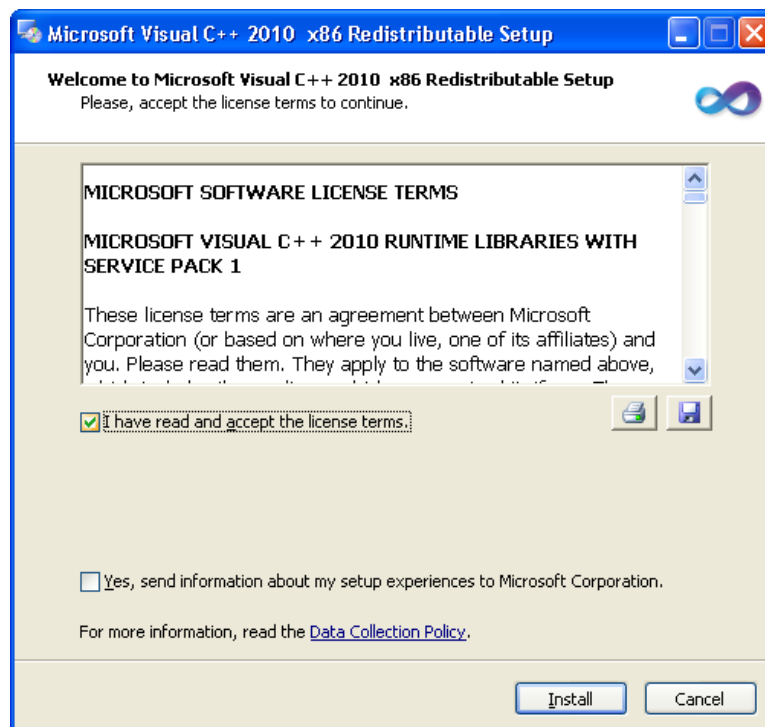
- Click **Next** button on the "Prerequisites" panel.



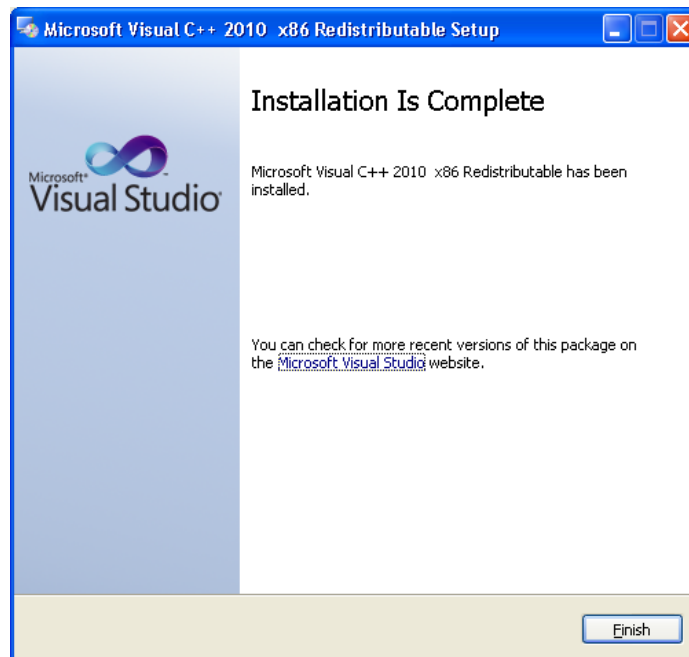
- Click **I have read and accept the license terms** then click the **Install** button on the "Microsoft .NET Framework" panel.



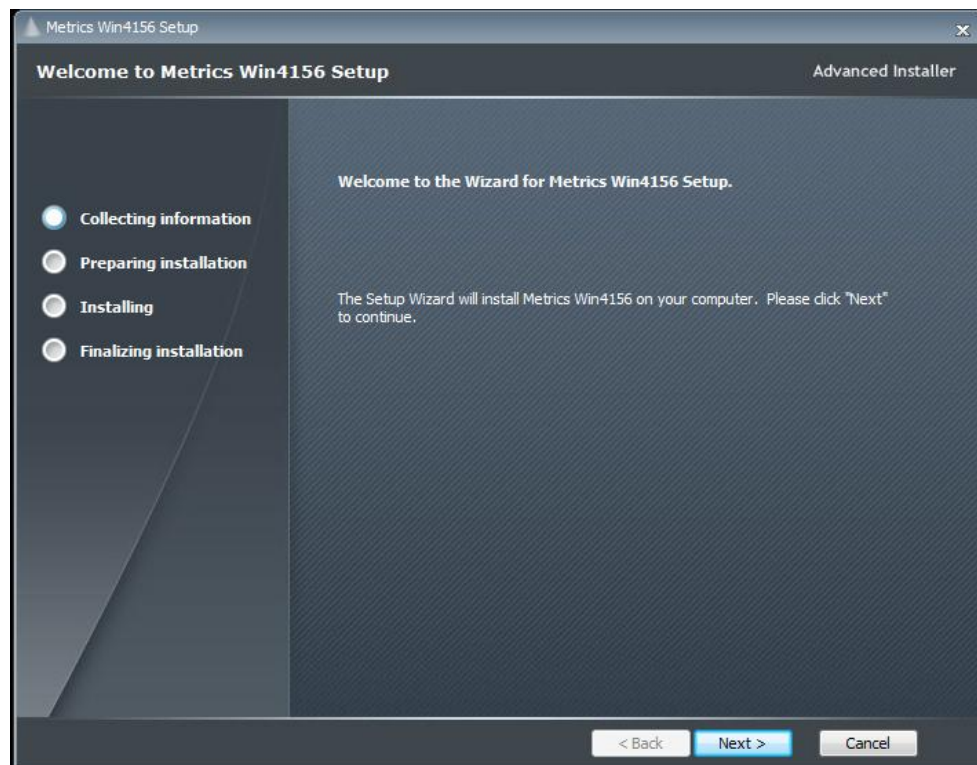
6. Click **Finish** to continue.



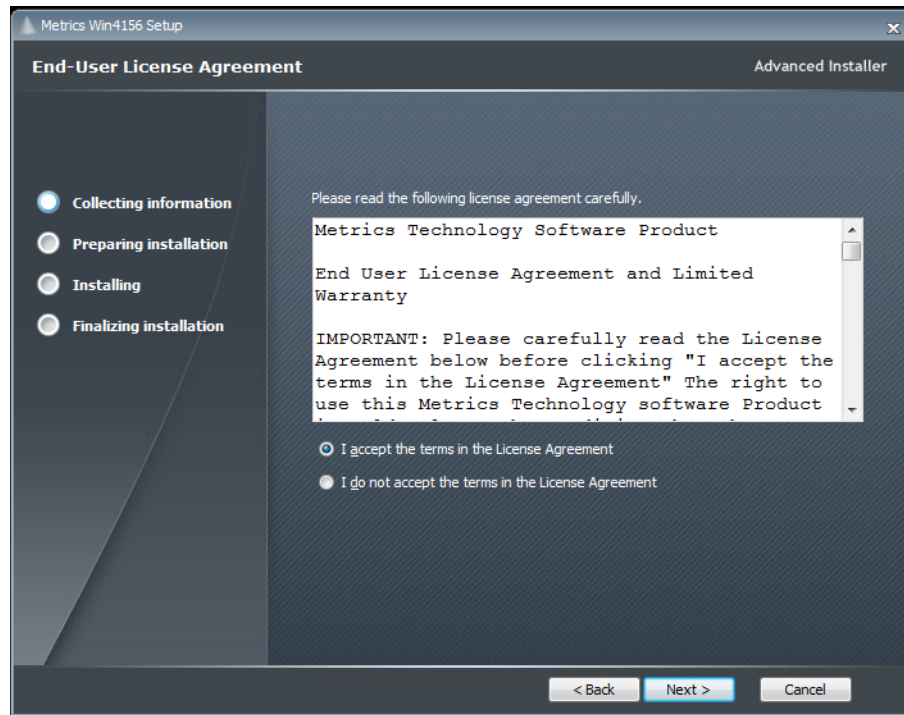
7. Click **I have read and accept the license terms** then click the **Install** button on the " Microsoft Visual C++ 2015-2022 Redistributable " panel.



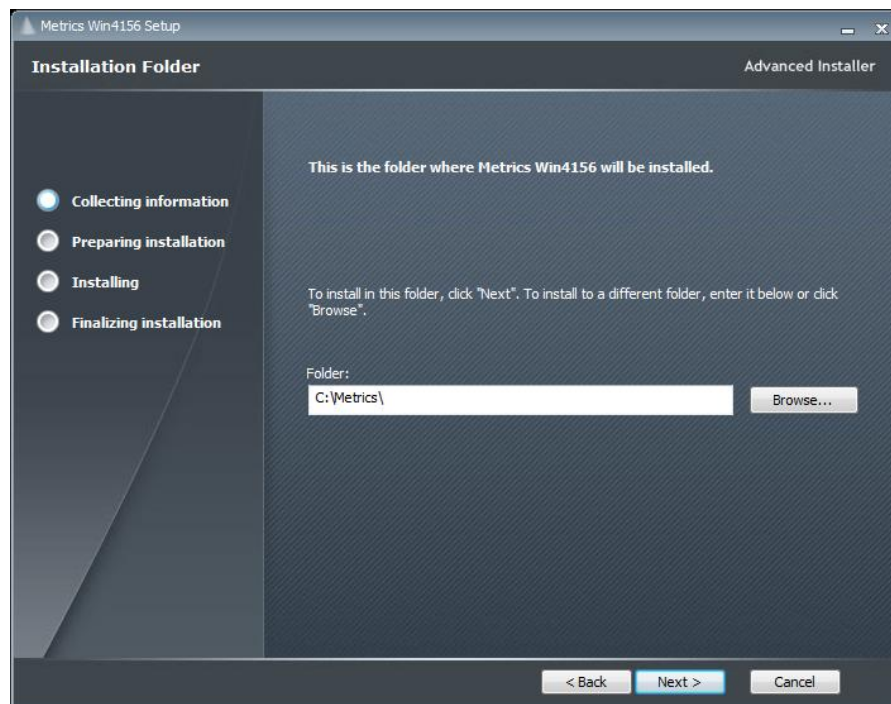
8. Click **Finish** to continue.



9. Click **Next** button on the "Welcome" panel.

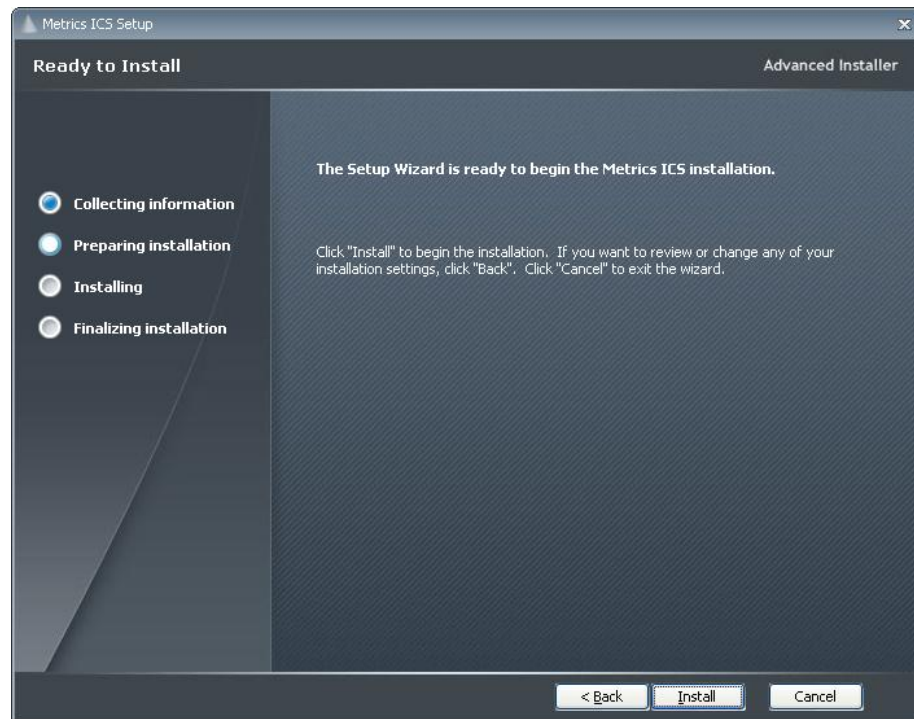


10. Read the "Software License Agreement" and click the **I agree to the terms in the License Agreement** button to agree to the terms, if you agree. Then click **Next**.



11. Choose "destination location" for installation and click the **Next** button.

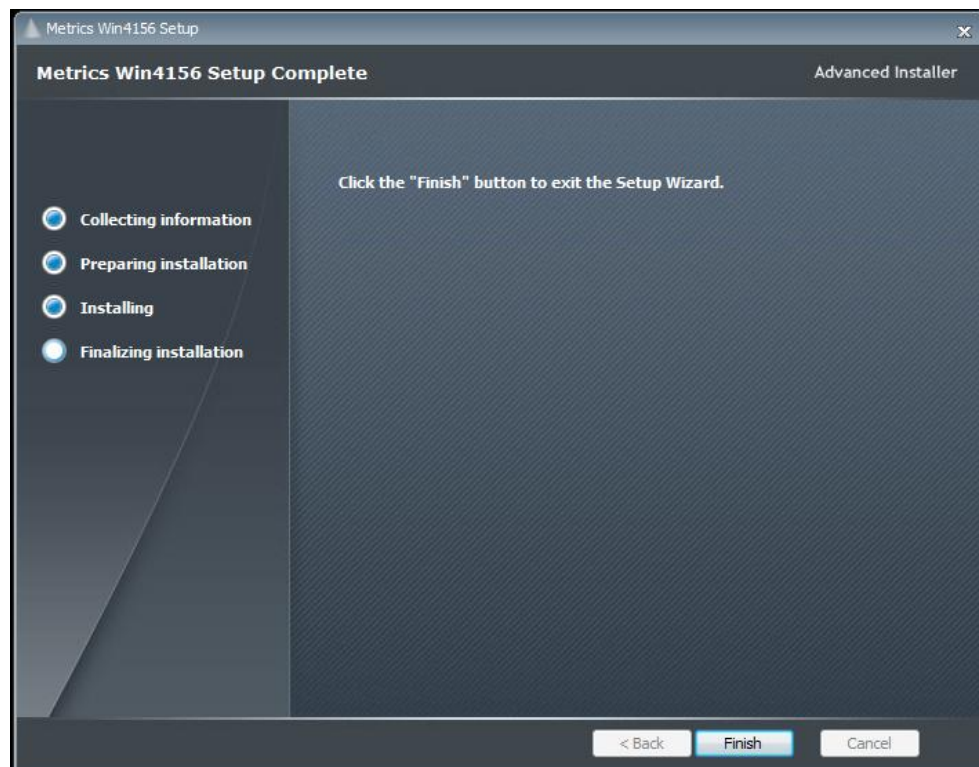
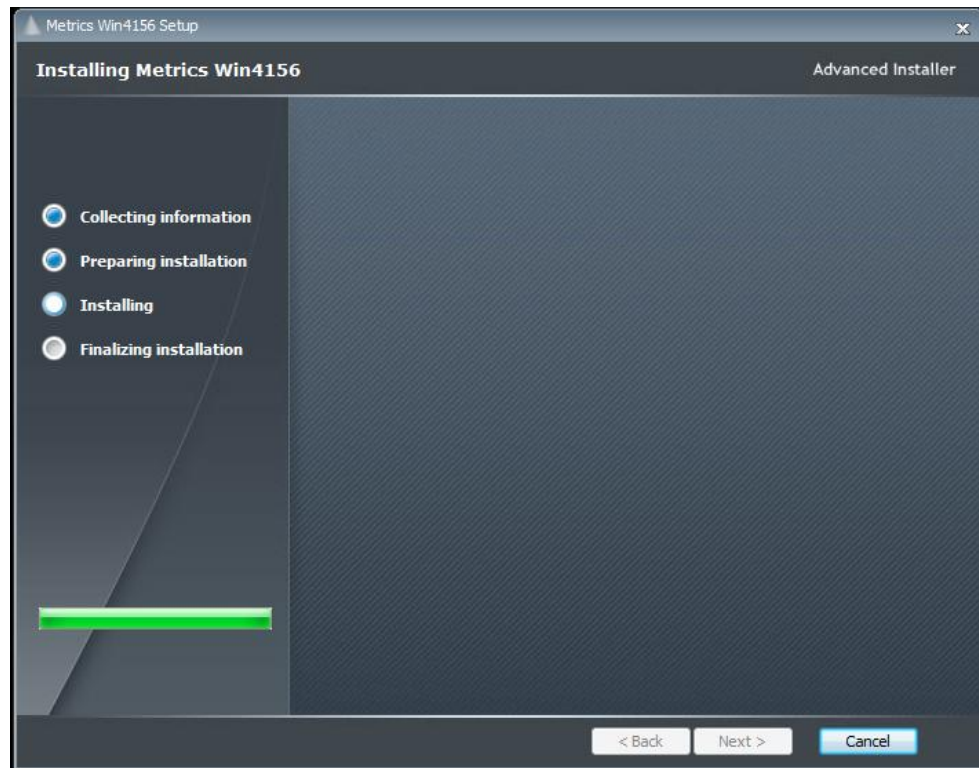
**Note:** It is recommended to select the default C:\Metrics\ as the location to maintain compatibility with previous versions of the software backups.



12. Click the **Install** button to begin the Metrics Win4156 installation.

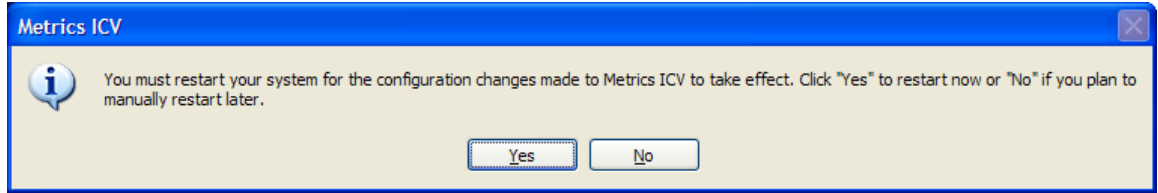
13. Allow the Metrics Win4156 installation to complete.





Then click **Finish** to complete the installation.

14. After the installation is finished, re-start the computer.



## Metrics Codewords

Metrics Technology software products use a combination of a hardware Security Key and Codeword. The unique combination of a Codeword and Security Key allows the software product to be run on any workstation PC.

### *Software Codeword Information*

There will be a codeword for each software component ordered. This information is made up of two (2) parts, the Registration ID and Codeword Information. We encourage all customers to register their software with Metrics Technology. Only registered users will receive technical support for their products.

#### **License ID**

The Customer ID is a number that has the form IAXXXXXA. Where the X is a number. Variations include IHXXXXA, MHXXXXA, and MKXXXXA. This number must match the number on the Security Key.

#### **Product Desc**

This is the Product Description. This will be the name of the product, Metrics Win4156.

#### **Product ID**

The product ID is MTW4145.

#### **Version**

This is the version of the software i.e. 4.5.0

**Note:** The version number and the codeword are matched. Thus, customers who have not purchased an upgrade will not be able to run it without purchasing the correct software version.



## Codeword Serial

### Example Codeword

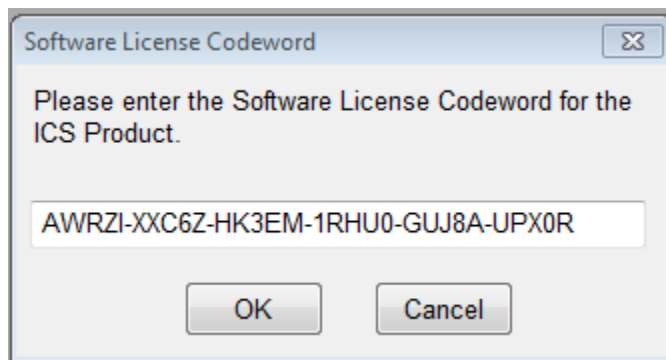
AWRZI-XXC6Z-HK3EM-1RHU0-GUJ8A-UPX0R

**Note:** It is recommended that you cut and paste the codeword from the registration e-mail sent from Metrics Technology Customer Service. Be careful not to copy any spaces before or after the codeword string. If typing the codeword from the keyboard be careful not to transpose letters or numbers. The letter I can be confused for the number 1 and the letter O can be mistaken for the number 0.

## *Entry of the Codeword Serial Number*

### To Enter the Win4156 Codeword Serial number:

2. Open the Win4156 program. In Win4156 select the menu item Help » Codeword to open the *Software License Codeword* window.



3. Enter the Win4156 Codeword Serial number supplied via e-mail or on the product registration certificate.
4. Click the **OK** button.