



Software Migration Guide

Metrics ICS

Version 4.2

Table of Contents

Introduction.....	3
Changes to Metrics ICS version 4.2	4
General User Interface Improvements	4
Updated Drivers	4
VBScript Drivers and Algorithms Depreciated	4
Upgrading Metrics ICS	5
Upgrading from Metrics ICS 3.7 or later to version 4.2	5
Step 1: Backup the Previous Metrics ICS	5
Step 2a: Upgrading Metrics ICS 4.0 or 4.1 to 4.2.....	5
Step 2b: New Install of Metrics ICS 4.2	13
Upgrading from Metrics ICS version 3.7 and Older.....	24
Step 1: Backup the Previous Metrics ICS	24

Introduction

The Metrics ICS version 4.2 software product has undergone a significant change in its structure. Now with support for Windows 7 and 10 Professional, all software modules have been completely ported and updated to full 32-bit in Microsoft Visual Studio 2010.

Some of the modifications that were implemented are based upon years of email, support, and training observations regarding areas of past versions of Metrics ICS that were confusing. The new version of Metrics ICS makes a significant attempt to simplify the process of performing measurements for the causal as well as advanced users.

The User Interface has a new look and is useful as a progression map. The pull-down menus have been retained for users who prefer the older methodology.

Changes to Metrics ICS version 4.2

General User Interface Improvements

- Added auto-column width for Data View spreadsheet windows.
- Updated File menu “Save As”, “Save to ICV Algorithm” dialogs boxes to display the “Save” button instead of “Open”.
- Added License # field to Help menu “About” dialog box to display current license number being read from the USB security key to aid in technical support and troubleshooting.
- Increased width of GPIB “Communications Log” window and increased length of log file to aid in technical support and troubleshooting communication problems.

Updated Drivers

Metrics ICS has re-added new versions of the Tek37x smart drivers to control the following pieces of test and measurement hardware:

- Tektronix 370/A/B and 371/A/B
- Added B1514A MCSMU (Medium Current Source Measure Unit) module support for Keysight B1500A Semiconductor Device Analyzer.
- Added polling support for B1525A HPPGU (High Power Pulse Generator Unit) and B1530A (WGFMU) to properly display slot numbers in B1500A mainframes with these units installed. Note: There is no driver support in MTICS for these pulse generators, but will be added to MTICV Pulse Generator Library in the future.
- Enhanced B1520A MFCMU module to fully support SCCU module allowing for simple switching between IV and CV measurements.
- Enhanced Step Generator point and step calculation in TEK 370 / TEK 371 driver to set max allowed voltage.
- Enhanced KI4200 driver by adding “limited auto-range” and “fixed ranging” modes.

Deprecated VBScript Drivers and Algorithm

Metrics ICS has removed support for VBScript that used to control the following:

- Tektronix 370/A/B and 371/A/B
- CV algorithms have been moved to Metrics ICV – IDE option

Upgrading Metrics ICS

Upgrading from Metrics ICS 3.7 or later to version 4.2

Because there is no in-place upgrade for moving from Microsoft Windows XP to Window 7 or 10 operating system installations will involve installing a new copy of Metrics ICS 4.2. In any case you will want to perform Step # 1 below to back-up your user generated files from any previous version of Metrics ICS.

Note: Please be aware that Microsoft ended all support for Windows XP April 2014. Due to this fact future versions of Metrics ICS will not support Windows XP.

To install Metrics ICS 4.2 on Windows 7 or 10, please perform the following steps:

Step 1: Backup the Previous Metrics ICS

The Metrics ICS setup program requires that you backup and uninstall the previous version. To do this, please perform the following steps:

**DO NOT LEAVE YOUR BACKUP ARCHIVE IN THE METRICS DIRECTORY!
COPY THE BACKUP.ZIP FILE TO A DIFFERENT LOCATION LIKE A USB
DRIVE.**

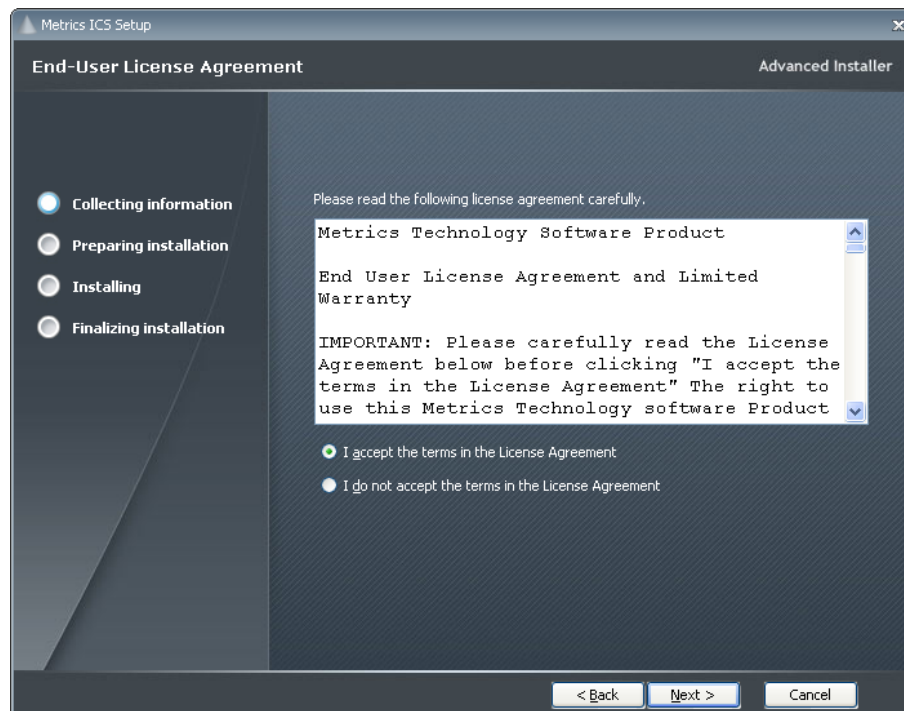
1. Go to the File Menu and select Backup
2. Enter the name of the backup ZIP archive in the ICS directory (i.e. C:\METRICS\ICS\backup.zip)
3. Allow the backup utility to complete then copy the .ZIP file to another drive location.

Step 2a: Upgrading Metrics ICS 4.0 or 4.1 to 4.2

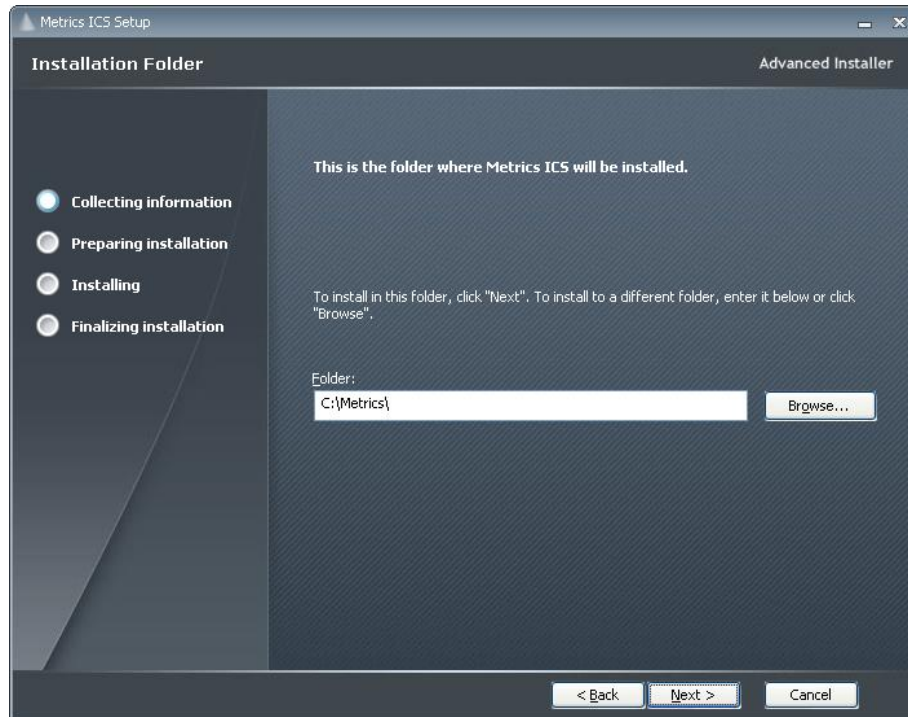
1. Insert the Metrics ICS install CD into the CD-ROM drive of your computer.
2. The CD-ROM should automatically start the Setup.exe installation program. If the installation does not start automatically then select right click on the CD drive icon in Windows Explorer and then select "explore". Select the **Setup.exe** application icon to start the installation program manually.



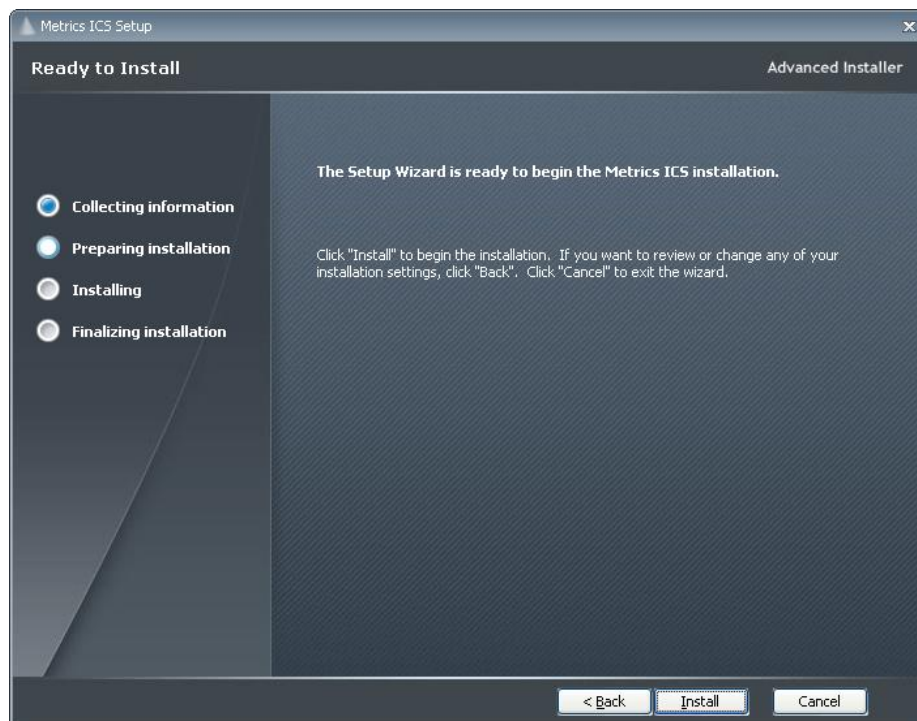
3. Click **Next** button on the "Welcome" panel.



4. Read the "Software License Agreement" and click the **I agree to the terms in the License Agreement** button to agree to the terms, if you agree. Then click **Next**.



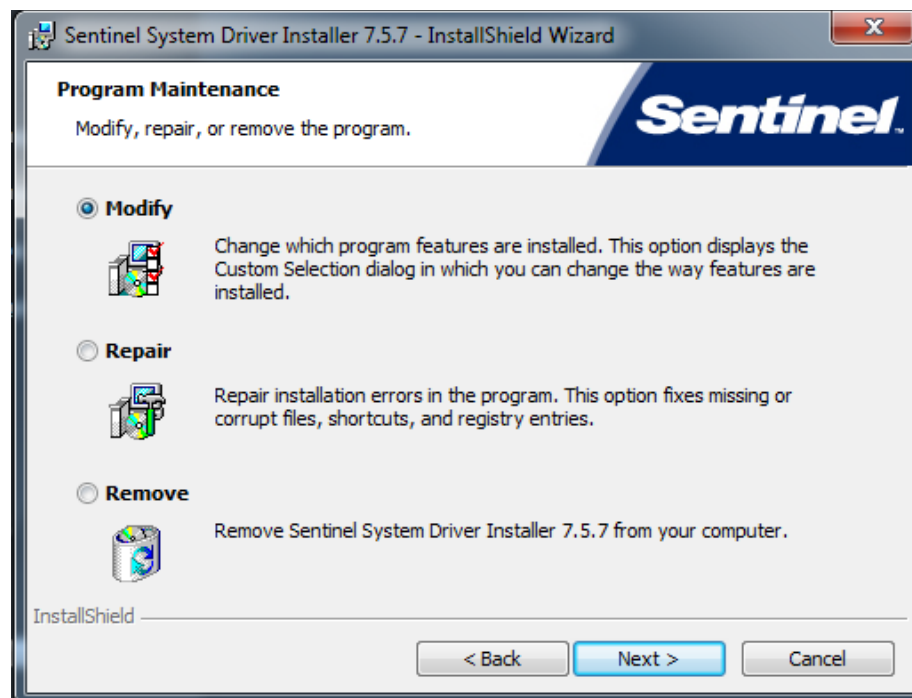
5. Choose "destination location" for installation and click the **Next** button.
Note: It is recommended to select the default C:\Metrics\ as the location to maintain compatibility with previous versions of the software backups.



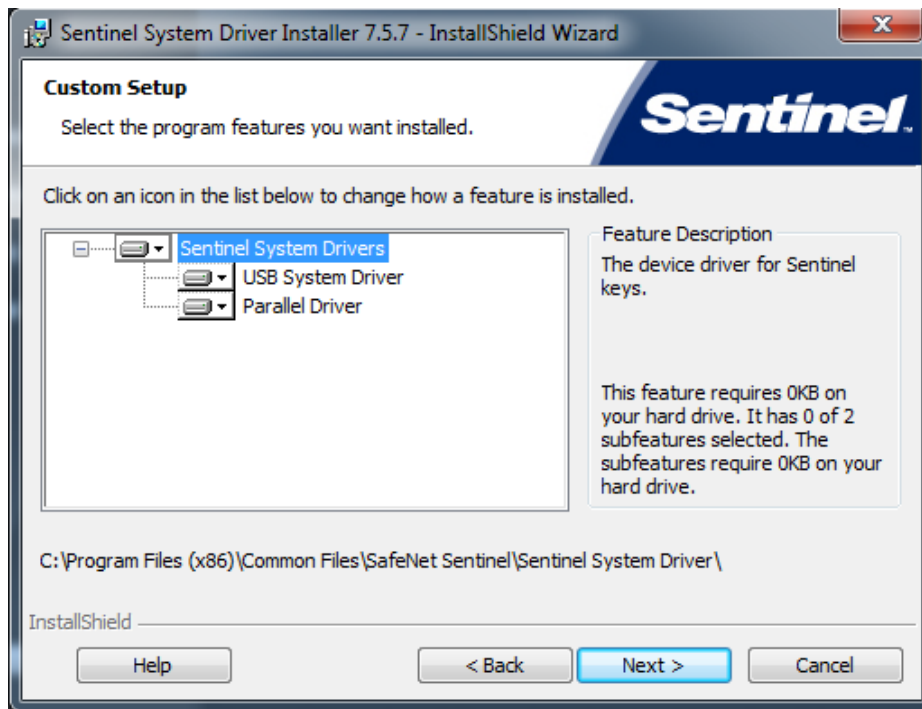
6. Click the **Install** button to begin the Metrics ICS installation.



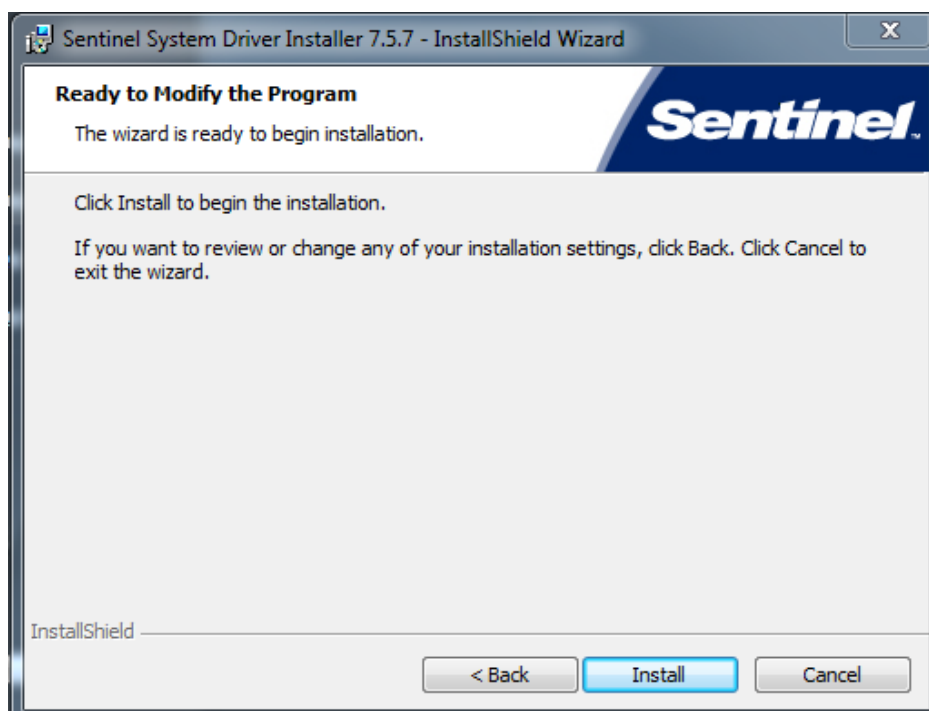
7. The Safenet Sentinel Pro driver installation will now be started to install the security license components.



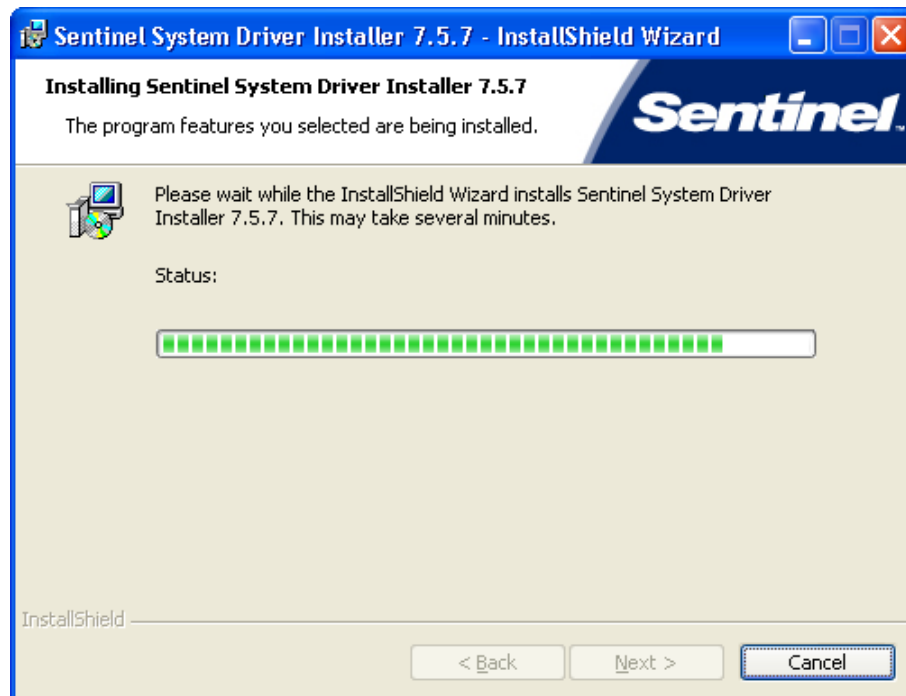
8. Select **Modify** setup type and click the **Next** button.



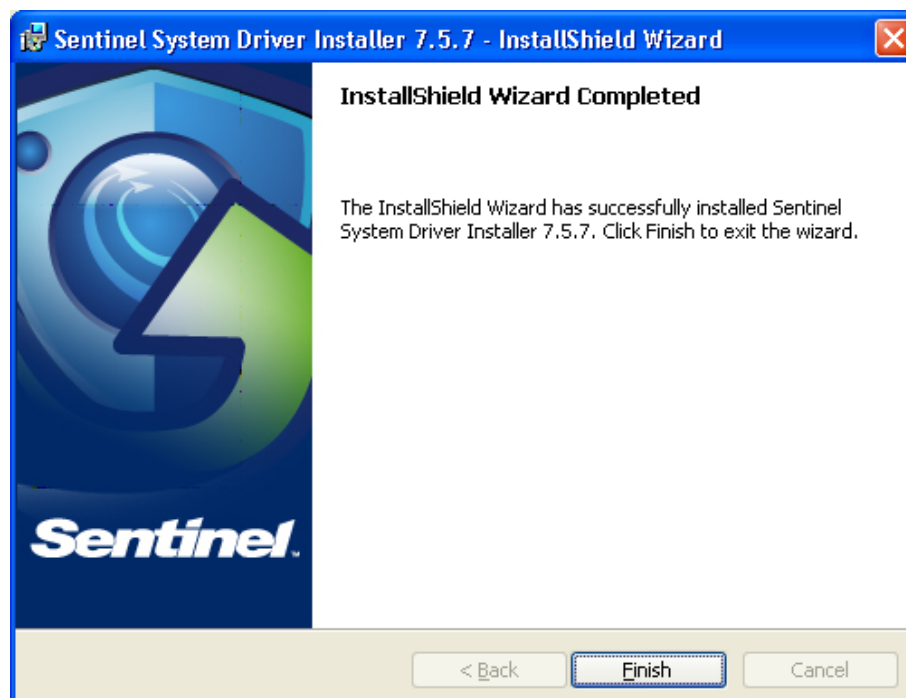
9. Click **Next** to start select the custom installation.



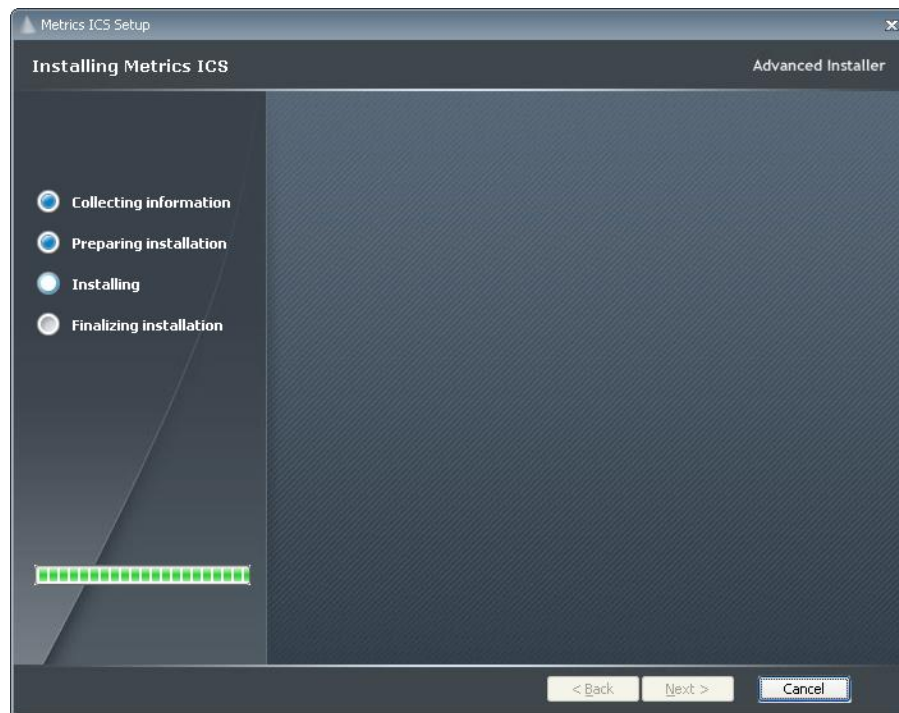
10. Click **Install** to start the Sentinel Driver installation.



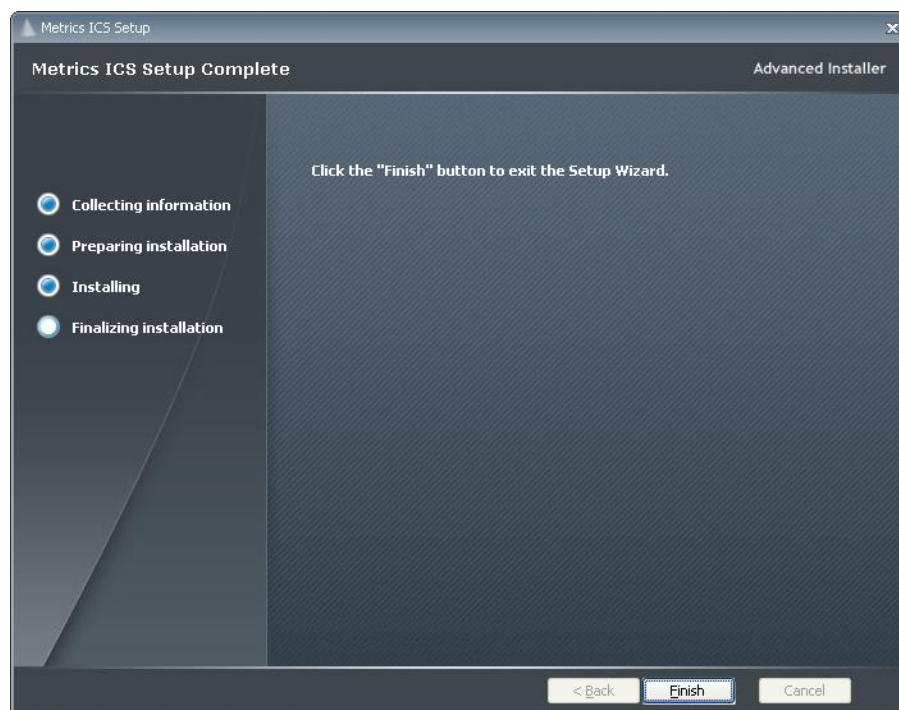
11. Allow the installation to complete.



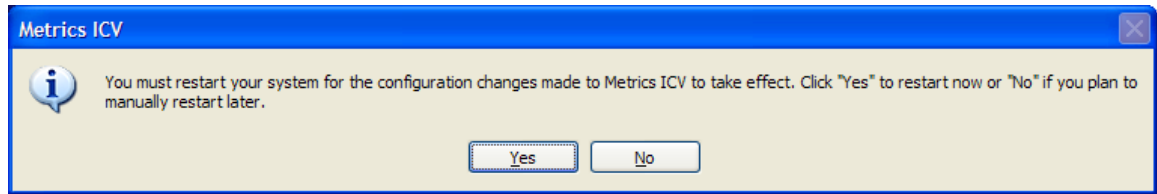
12. Then click Finish to continue with the Metrics ICS installation.



13. Allow the Metrics ICS installation to complete.



14. Then click **Finish** to complete the installation



15. After the installation is finished, re-start the computer.
16. Connect the USB Security Key to the USB port of your computer. The Windows Hardware Manager should detect the USB device as Safenet USB SuperPro/UltraPro and should automatically install the driver for the device.

Note: It is recommended the security plug be connected directly to the computer instead of through a USB hub or keyboard port if possible.

Step 2b: New Install of Metrics ICS 4.2

The installation program for the Metrics ICS software installs all components necessary to run Metrics ICS.

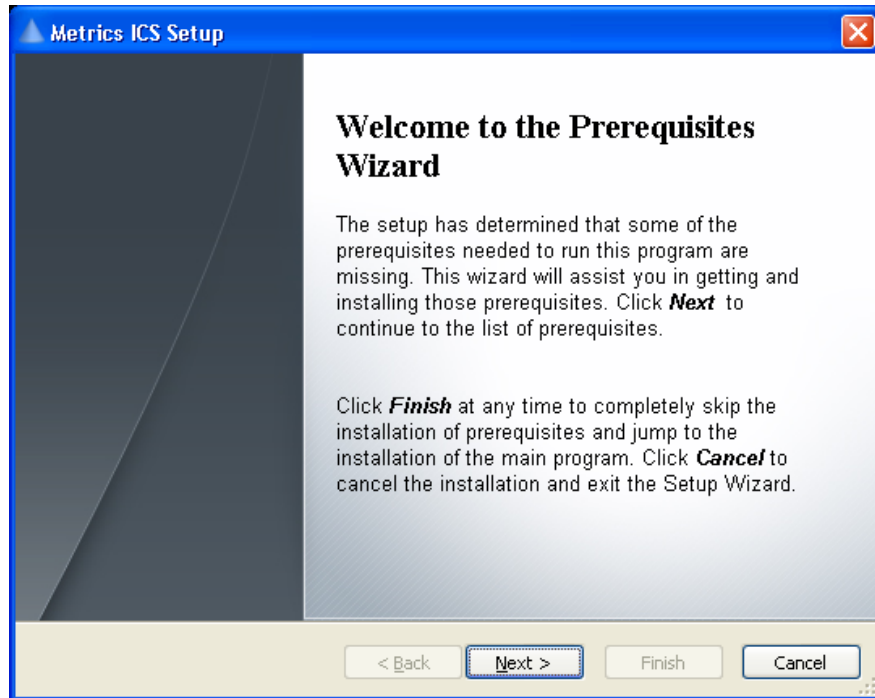
Obtain a Codeword

Please visit our website at www.metricstech.com to register your software, obtain your log-in credentials and be issued a temporary or permanent codeword. This process is typically completed within 24 hours or less.

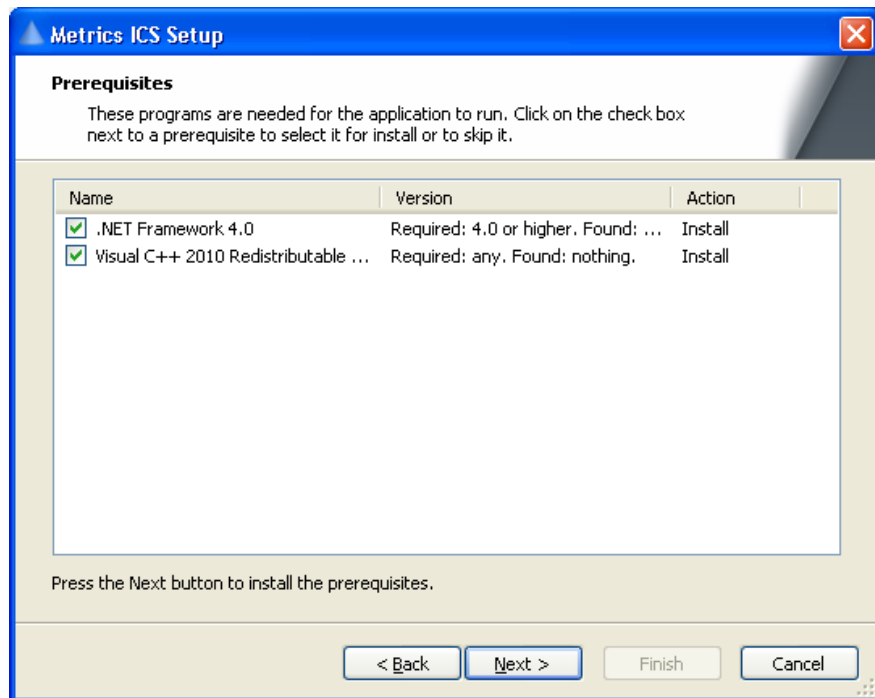
Procedure to Install ICS

1. Insert the Metrics ICS install CD into the CD-ROM drive of your computer.
2. The CD-ROM should automatically start the "Setup.exe" installation program. If the installation does not start automatically then select right click on the CD drive icon in Windows Explorer and then select "explore". Select the "Setup.exe" application icon to start the installation program manually.

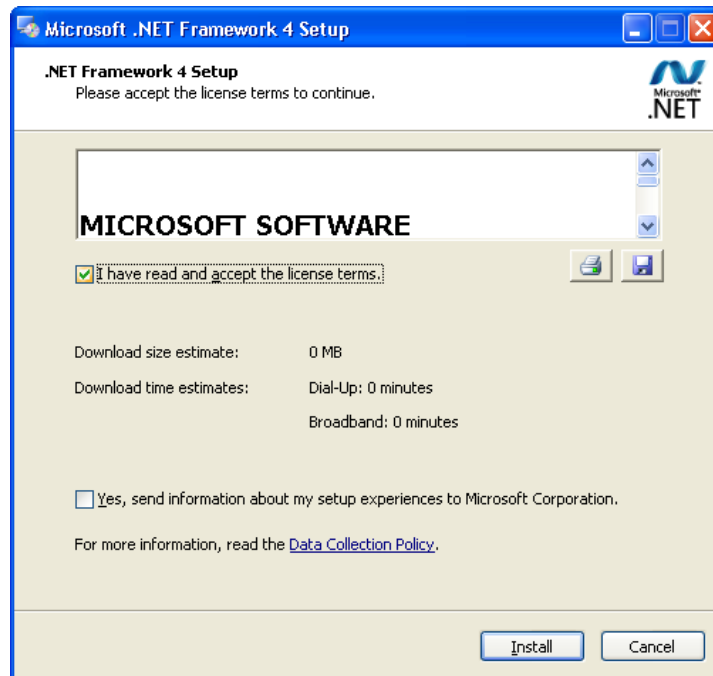
The installation will check for any prerequisites and start the Prerequisites Wizard to install the necessary software. Please note installation of some of these software components requires acceptance of the 3rd Party license agreements displayed during installation. Installation of some components can take some time so you should allow more time for installation if these components are not already installed on your workstation PC.



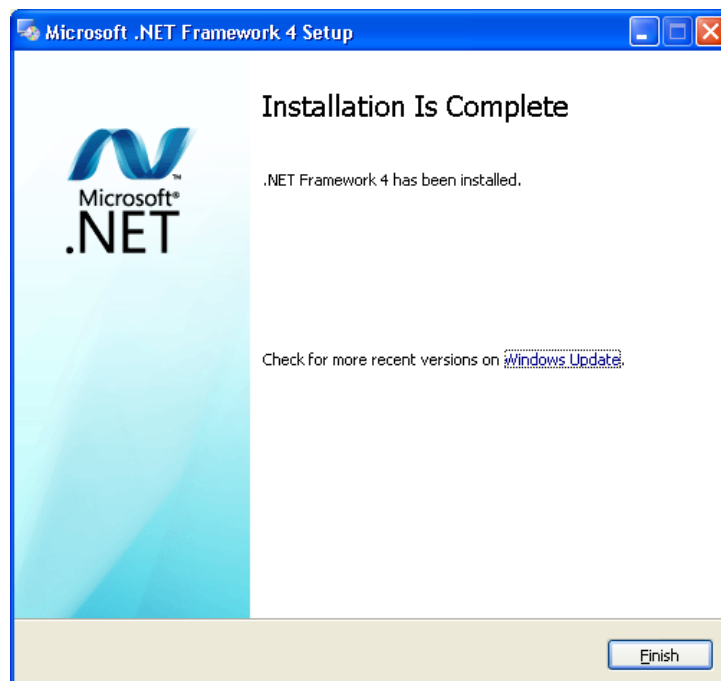
3. Click **Next** button on the "Welcome" panel.



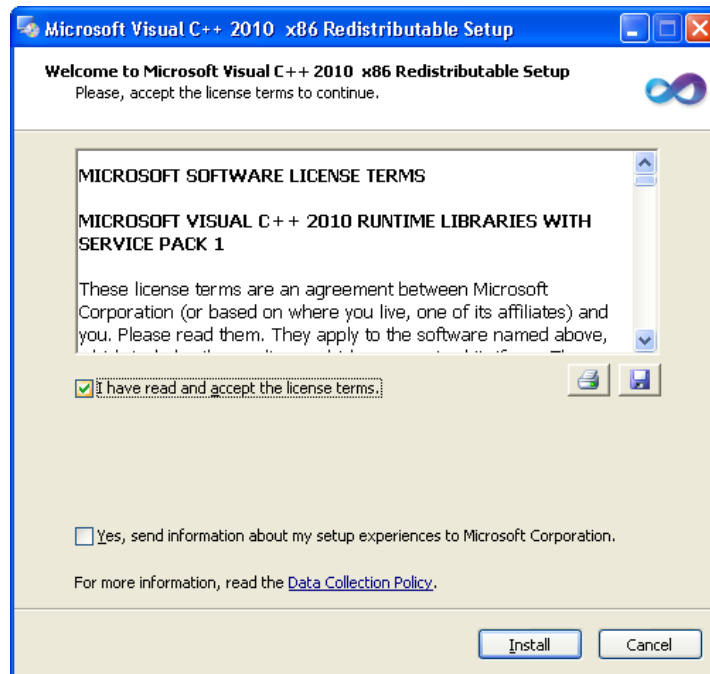
4. Click **Next** button on the "Prerequisites" panel.



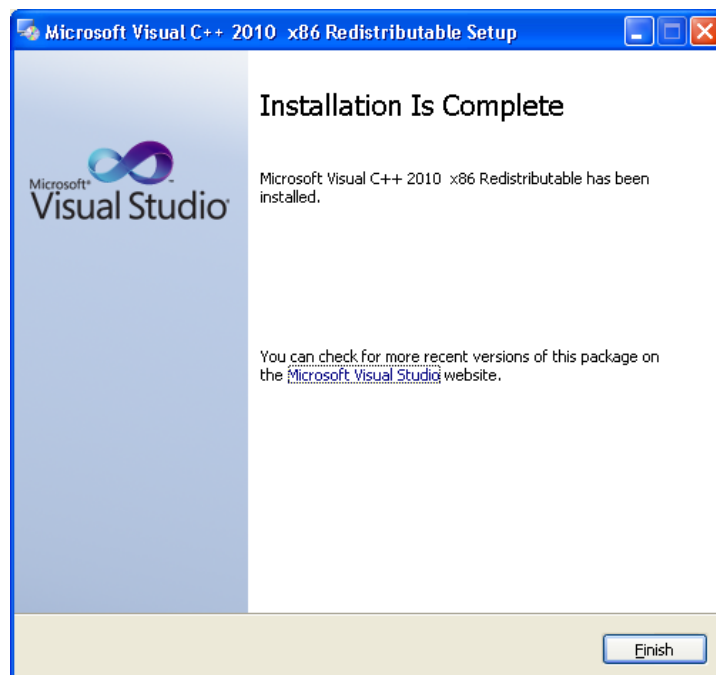
5. Click **I have read and accept the license terms, if you agree**, then click the **Install** button on the "Microsoft .NET Framework" panel.



6. Click **Finish** to continue.



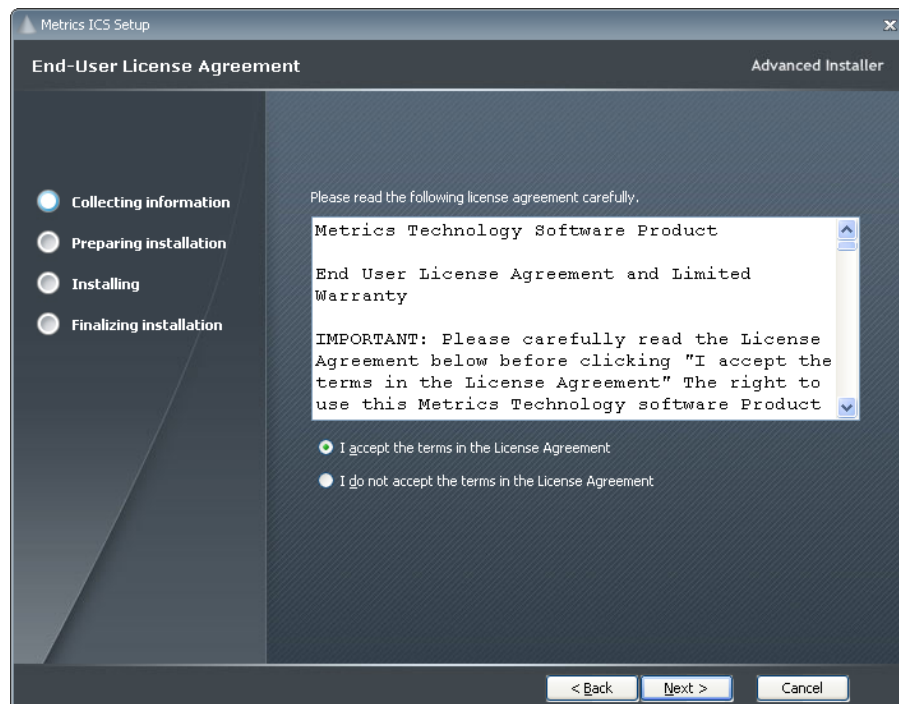
7. Click **I have read and accept the license terms, if you agree**, then click the **Install** button on the "Microsoft Visual C++ 2010 Redistributable" panel.



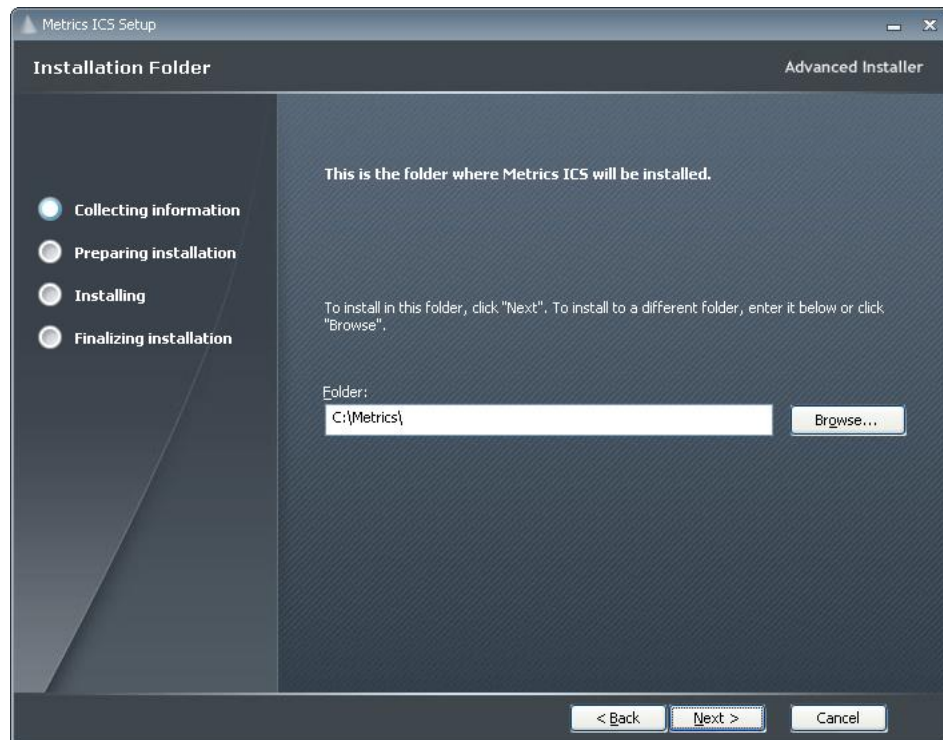
8. Click **Finish** to continue.



9. Click **Next** button on the "Welcome" panel.

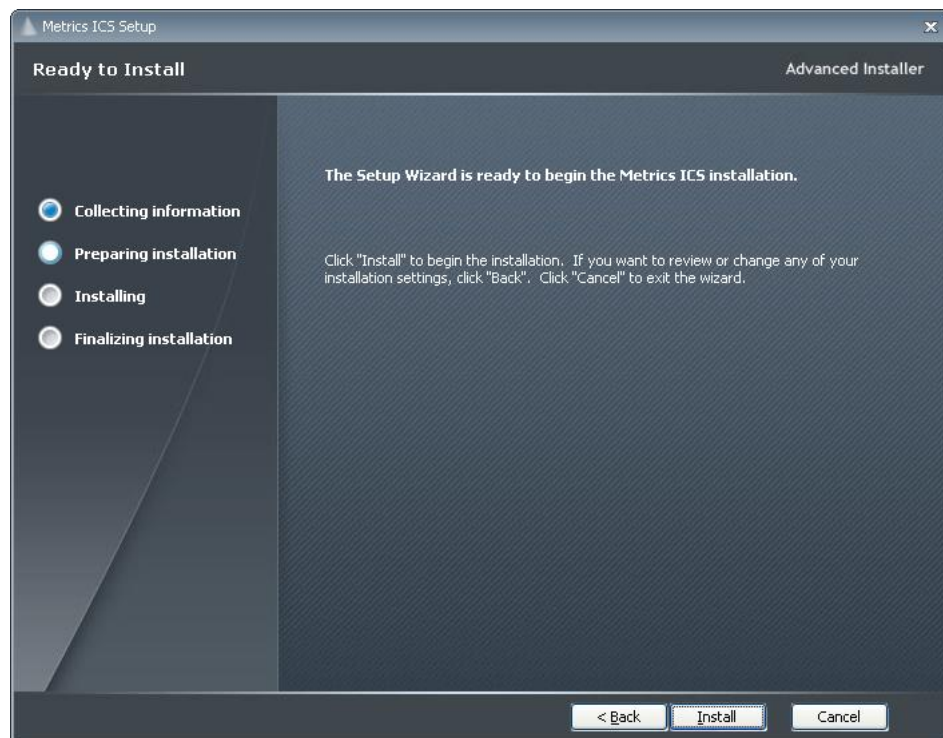


10. Read the "Software License Agreement" and click the **I agree to the terms in the License Agreement**, if you agree, button to agree to the terms. Then click **Next**.



11. Choose "destination location" for installation and click the **Next** button.

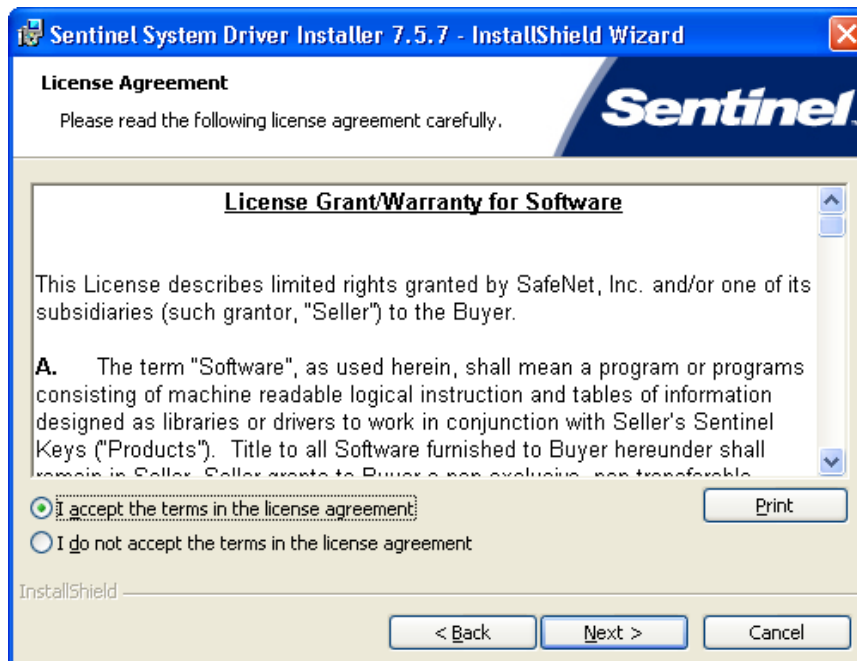
Note: It is recommended to select the default C:\Metrics\ as the location to maintain compatibility with previous versions of the software backups.



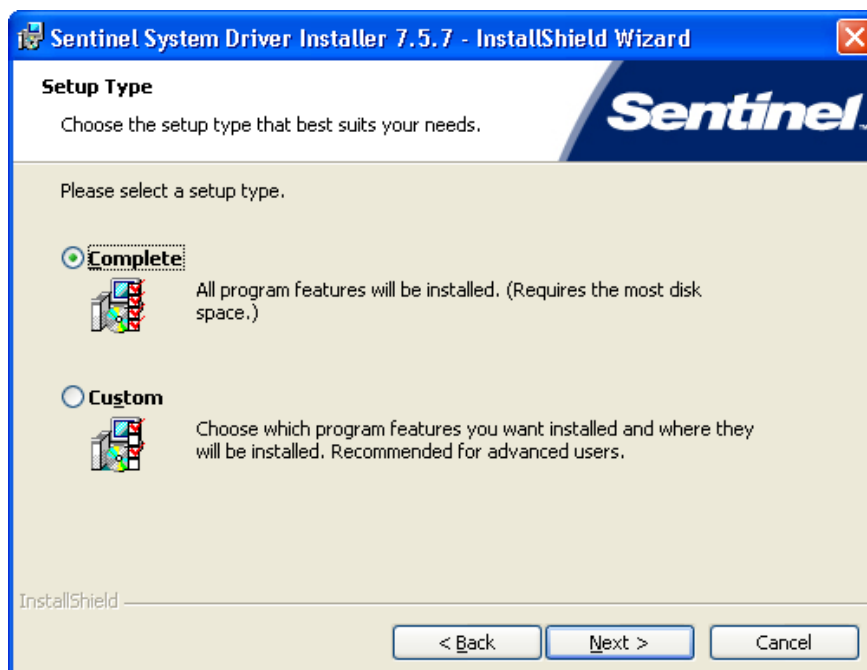
12. Click the **Install** button to begin the Metrics ICS installation.



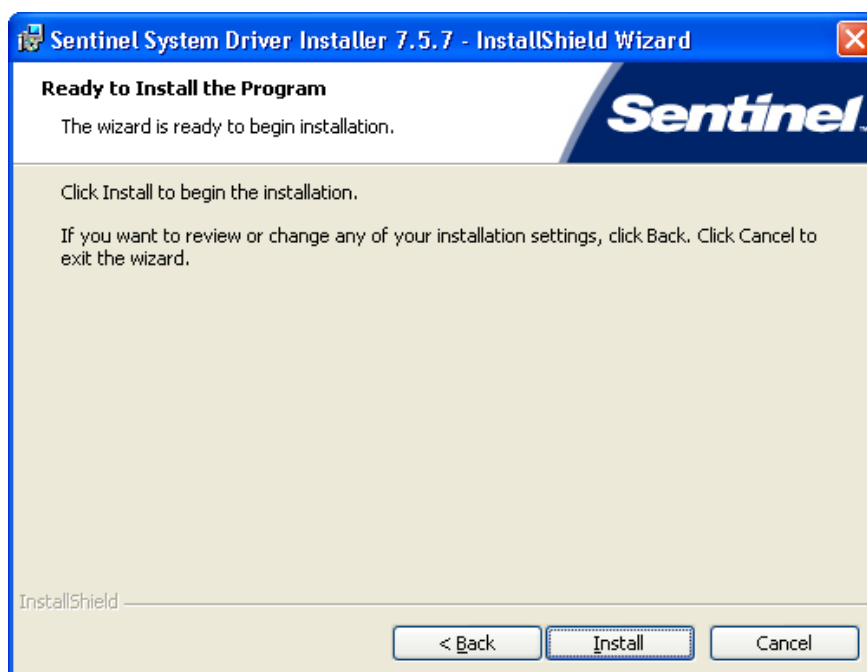
13. The Safenet Sentinel Pro driver installation will now be started to install the security license components.



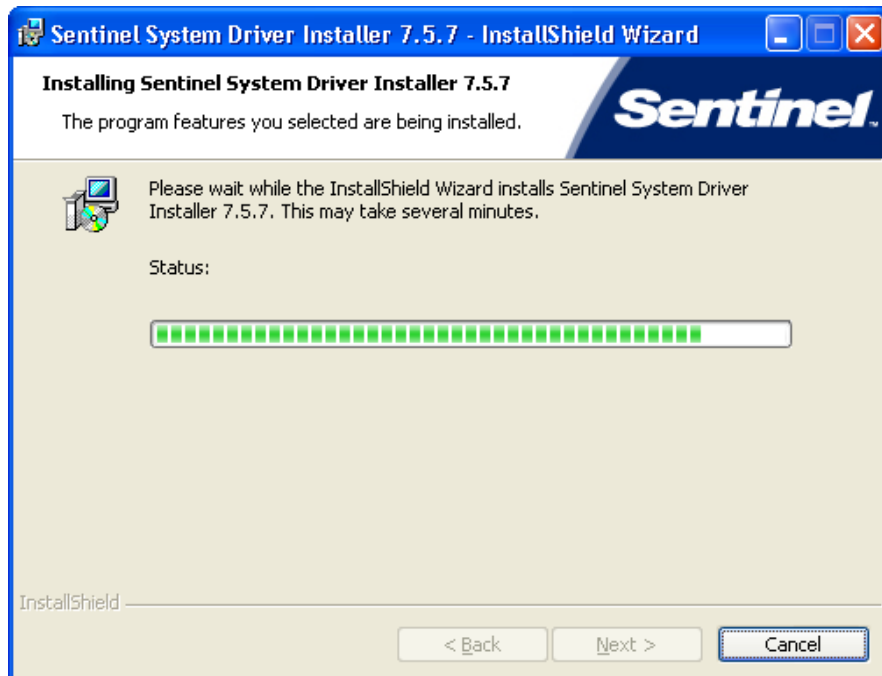
14. Read the "Software License Agreement" and click the **I agree to the terms in the License Agreement, if you agree,** button to agree to the terms. Then click **Next**.



15. Select **Complete** setup type and click the **Next** button.



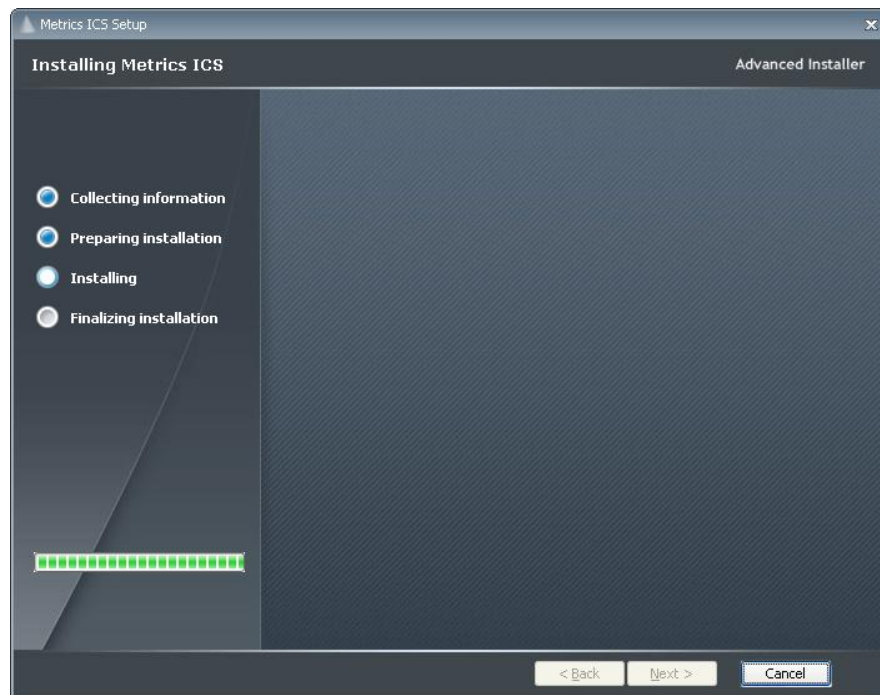
16. Click **Install** to start the Sentinel Driver installation.



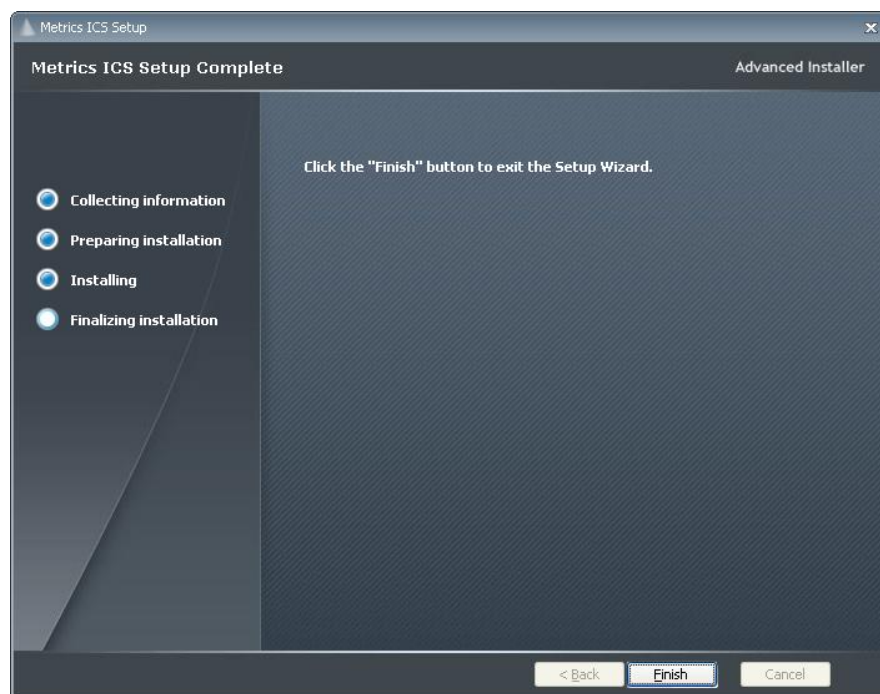
17. Allow the installation to complete.



18. Then click **Finish** to continue with the Metrics ICS installation.

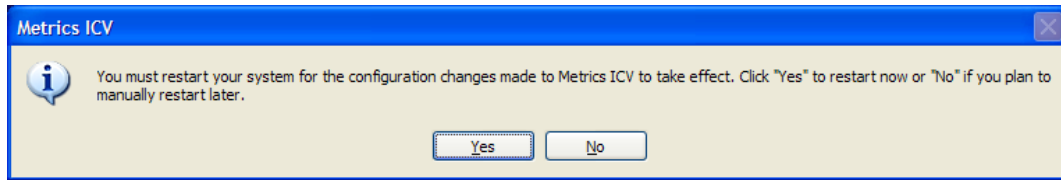


19. Allow the Metrics ICS installation to complete.



20. Then click **Finish** to complete the installation.

21. After the installation is finished, re-start the computer.



22. Connect the USB Security Key to the USB port of your computer. The Windows Hardware Manager should detect the USB device as Safenet USB SuperPro/UltraPro and should automatically install the driver for the device.

Note: It is recommended the security plug be connected directly to the computer instead of through a USB hub or keyboard port if possible.

Upgrading from Metrics ICS version 3.7 and Older

Because there is no in-place upgrade for moving from Microsoft Windows XP to Windows 7 or 10 operating system installations will involve installing a new installation of Metrics ICS 4.2. It is recommended that you also perform this process on a new computer with a new installation of Windows 7 or Windows 10, and then restore the ICS project files.

Step 1: Backup the Previous Metrics ICS

The Metrics ICS setup program requires that you backup and uninstall the previous version if installing on the same computer with a new Windows OS installation. To do this, please perform the following steps:

**DO NOT BACKUP YOUR SOFTWARE INTO THE METRICS DIRECTORY!
BACKUP TO A DIFFERENT LOCATION.**

To manually backup your ICS user files do the following:

1. Copy your ICS database (\Metrics\ics\data). Back up the whole "C:\Metrics\ics\data" directory and all sub-directories.
2. Open a project using the ICS File Manager by selecting its attributes and then select "Export" from the "File" menu.
3. Select "Project Binary" from Export dialog. Save your project files with the extension (.ics) which will be the new compatible file extension and will be copied to the new C:\Metrics\ics\projects directory after installation of Metrics ICS 4.2.
4. Repeat step 2 for all project files in your database that you want to move to the new version.
5. If you have any binary (.dat) files already saved on your system you can use the "Import" menu item in Metrics ICS 4.2 File menu to load these files and then save them to (.ics) file extensions for future use.

Now install a new version of Microsoft Windows 7 or 10 on your PC Workstation and then follow the installation instructions starting with Step 2b New Install of Metrics ICS 4.2 on page 13 of this guide. Once you have completed the installation steps you can then copy your ICS project files to the C:\Metrics\ics\projects directory and will be able to open them in Metrics ICS 4.2.