



Installation and Getting Started Guide

Metrics Win4145

Version 4.1.0

© Copyright 1999-2015, Metrics Technology, Inc. All rights reserved.

Table of Contents

Installing the Win4145 Software	4
Obtain a Codeword	4
Important Note for Customers upgrading	4
Procedure to Upgrade Win4145 from 4.0 to 4.1	5
Procedure to Install Win4145 (new installation)	12
Metrics Codewords	22
Software Codeword Information	22
Entry of the Codeword Serial Number	23
Introductory Information	25
Goal of This Manual	25
Chapter 1- Win4145 Getting Started Guide.....	26
Introduction.....	26
Topics Covered	26
What is Metrics Win4145 Software?	27
Overview of Metrics Win4145 Software	27
Determining Software Version	28
Updating the Metrics Win4145 Software	29
Support.....	29
Chapter 2- Selecting Instruments.....	30
Introduction.....	30
Topics Covered:	30
Selecting an Instrument Driver	31
Configuring the Instrument.....	32
Polling an Instrument.....	32
Chapter 3- Creating Measurements	33
Introduction.....	33
Topics Covered	33
Create a Sweep Measurement	34
Create a Spot Measurement	38
Creating a Time-Based Measurement.....	42
Chapter 4- Executing Measurements	48
Introduction.....	48
Topics Covered	48
Measurement Remote Control	49
The Data Window	51
The Data Window	51
Edit the DataView	52
Sync the DataView with Microsoft Excel	53
Chapter 5- Plotting Data	55
Introduction.....	55
Topics Covered	55
Creating a Plot.....	56

Editing a Plot.....	58
Chapter 6- Extracting Data	59
Introduction.....	59
Topics Covered	59
The Transform Editor	60
Defining a Transform.....	62
Sharing Data Between Transforms	63
Chapter 7- Saving Data	65
Introduction.....	65
Topics Covered	65
Where is the Data?	66
Saving a Project	66

Installation and Configuration

Installing the Win4145 Software

Note: Do not install the USB Security Key until after the Metrics Win4145 Software is installed and the PC is restarted. The security key requires special drivers that are installed with Win4145. Windows Hardware Manager should detect the USB Security Key as Safenet USB SuperPro/UltraPro and install the driver automatically.

The installation program for the Metrics Win4145 software installs all components necessary to run Metrics Win4145. You can download the auto-extracting archive MTW4145-41.EXE from the Metrics Technology website under Downloads link. Be sure to save the install file to your local hard disk before running the installation. Running the installation from the website will cause an installation error. You will need a valid customer login to enter the Software Downloads area.

NOTE: You should also download the latest available hot fix release which can be found in the same software list and designated MTW4145-41-HFXX.EXE where the XX is the version of the hot fix. Hot fixes contain resolutions to any reported issues and some enhancements that have been added since the initial release of Metrics Win4145 4.1. It is only necessary to apply the latest hot fix to your system since all updates are contained in the latest build. Save the hot fix file to your local computer and you can install it after the base Metrics Win4145 installation is complete.

Obtain a Codeword

This codeword is obtained by registering your software with Metrics Technology. Please visit our website at www.metricstech.com to register your software and obtain the codeword.

Important Note for Customers upgrading

The Metrics Win4145 setup program requires that you backup and uninstall the previous version. To do this, please perform the following steps:

**DO NOT LEAVE YOUR BACKUP ARCHIVE IN THE METRICS DIRECTORY!
COPY THE BACKUP.ZIP FILE TO A DIFFERENT LOCATION LIKE A USB
DRIVE.**

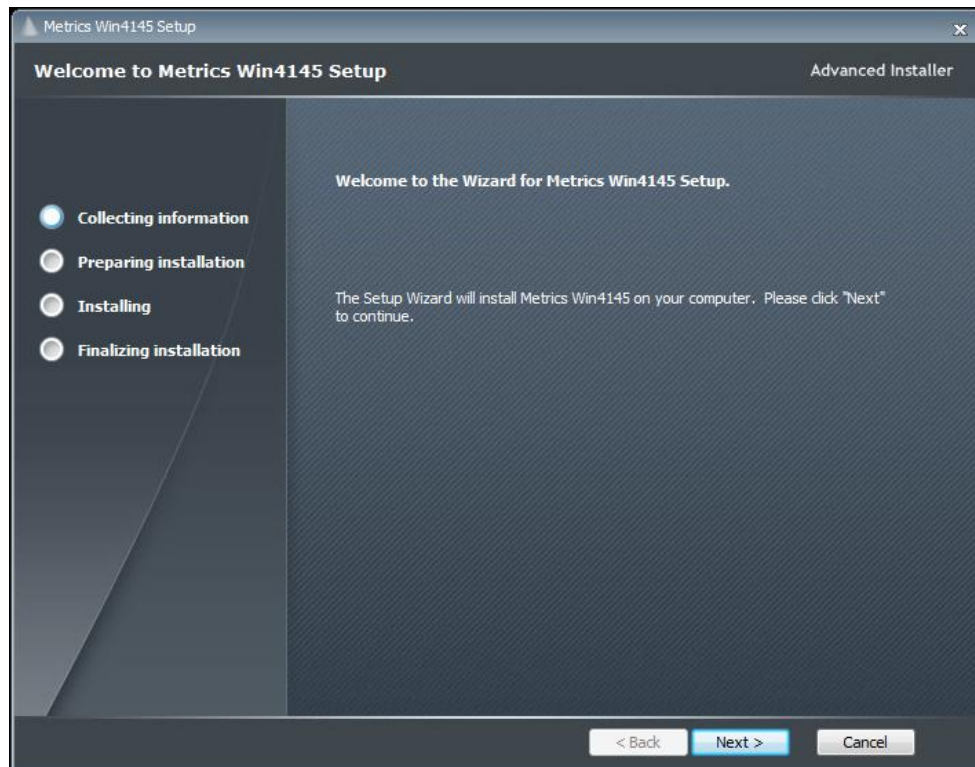
1. Go to the File Menu and select Backup
2. Enter the name of the backup ZIP archive in the W4145 directory (i.e. C:\METRICS\W4145\backup.zip)
3. Allow the backup utility to complete then copy the .ZIP file to another drive location.

After upgrading, some of the functions of the software will require that older projects or features be modified. A brief list of the modifications are:

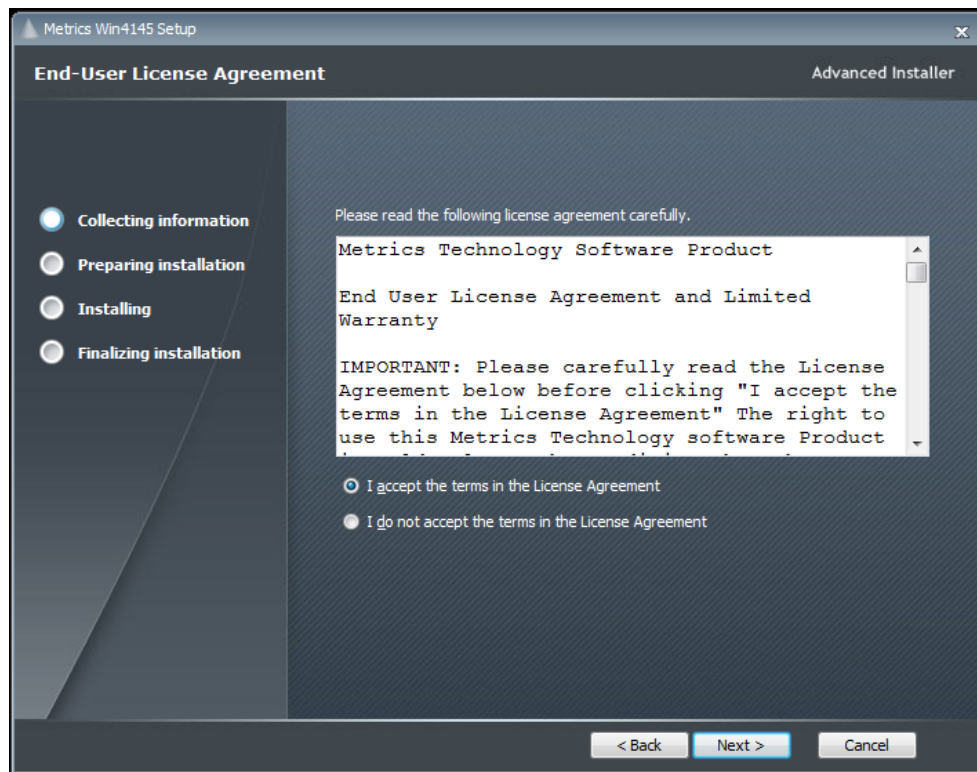
Metrics Win4145 files are now be stored in the windows file system. Existing tests should be opened and then saved in the Metrics\ics\projects directory.

Procedure to Upgrade Win4145 from 4.0 to 4.1

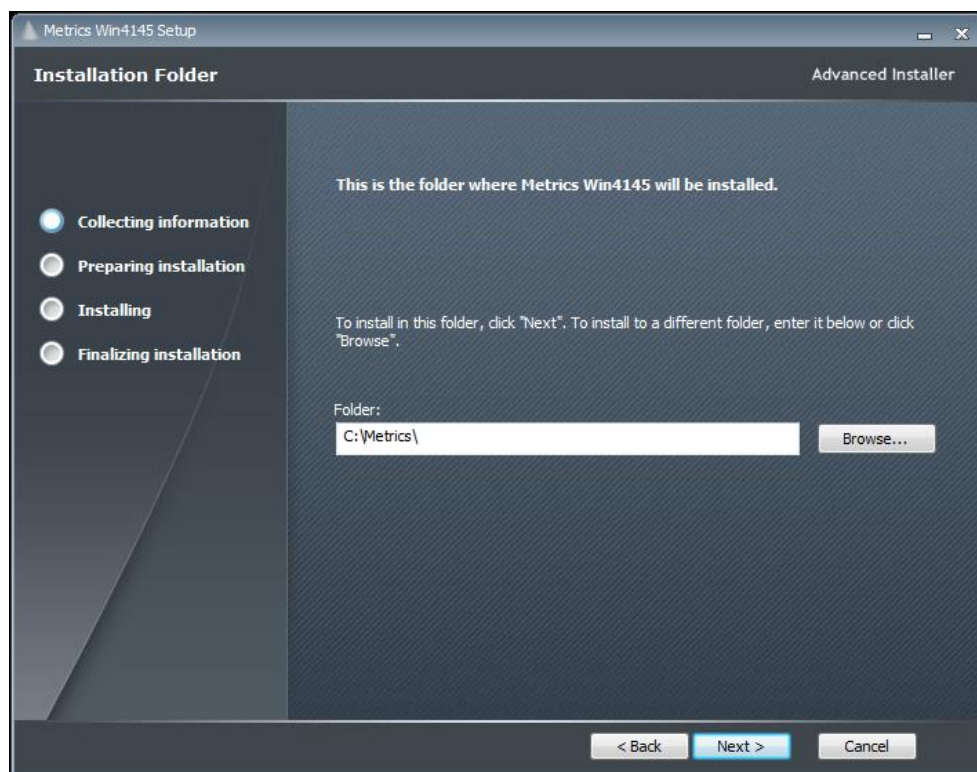
1. Insert the Metrics Win4145 install CD into the CD-ROM drive of your computer.
2. The CD-ROM should automatically start the Setup.exe installation program. If the installation does not start automatically then select right click on the CD drive icon in Windows Explorer and then select "explore". Select the **Setup.exe** application icon to start the installation program manually.



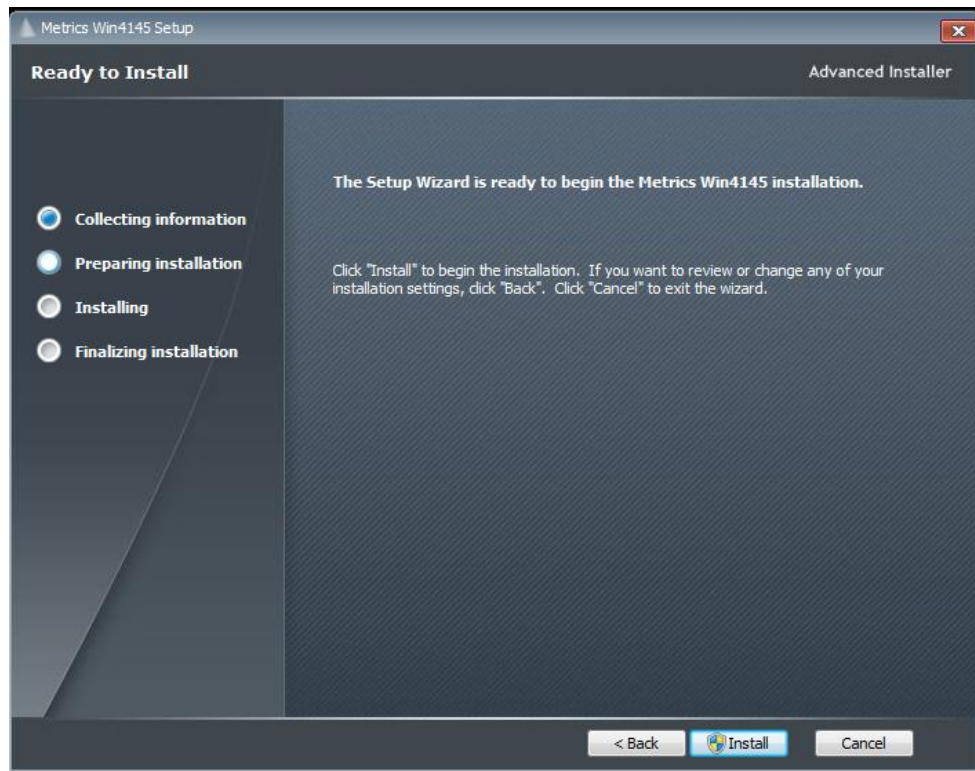
3. Click **Next** button on the "Welcome" panel.



4. Read the "Software License Agreement" and click the **I agree to the terms in the License Agreement** button to agree to the terms. Then click **Next**.



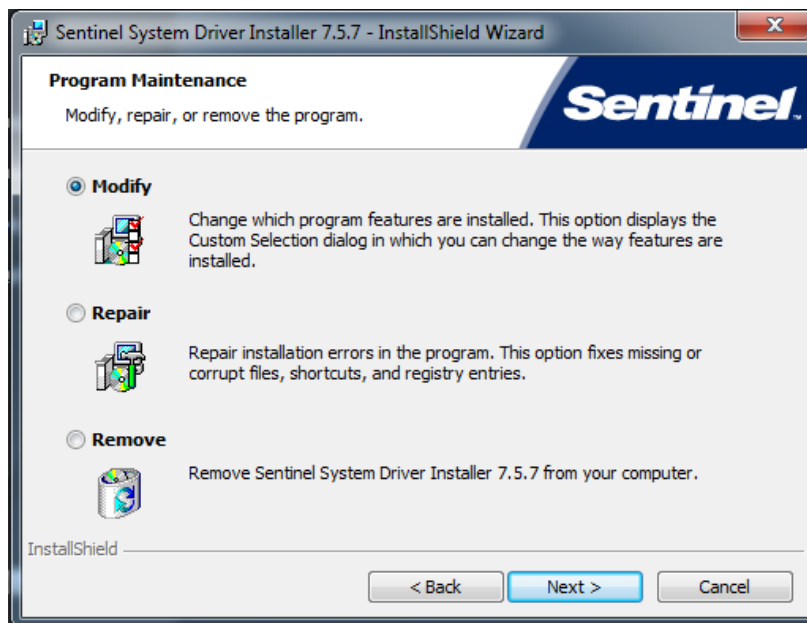
5. Choose "destination location" for installation and click the **Next** button.
NOTE: It is recommended to select the default C:\Metrics\ as the location to maintain compatibility with previous versions of the software backups.



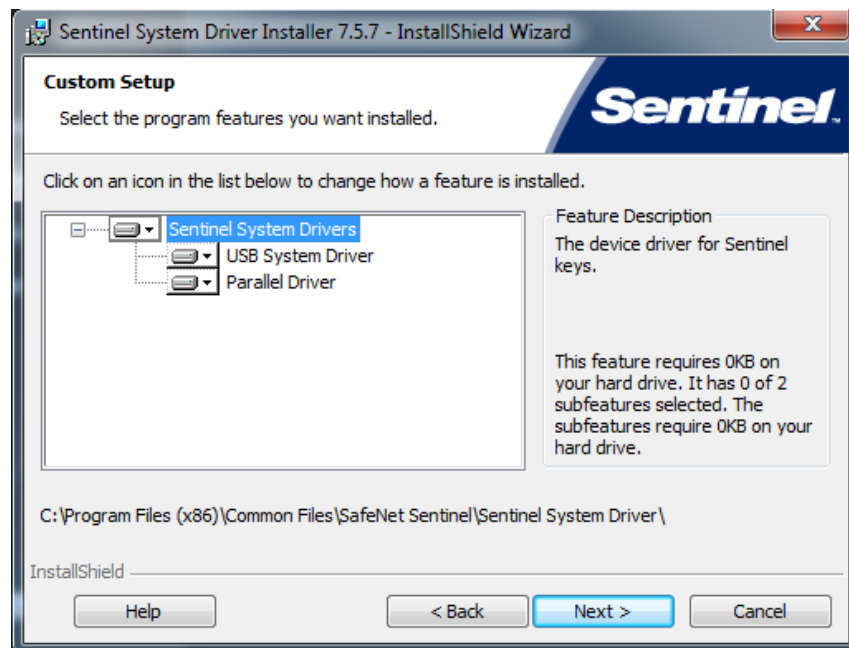
6. Click the **Install** button to begin the Metrics Win4145 installation.



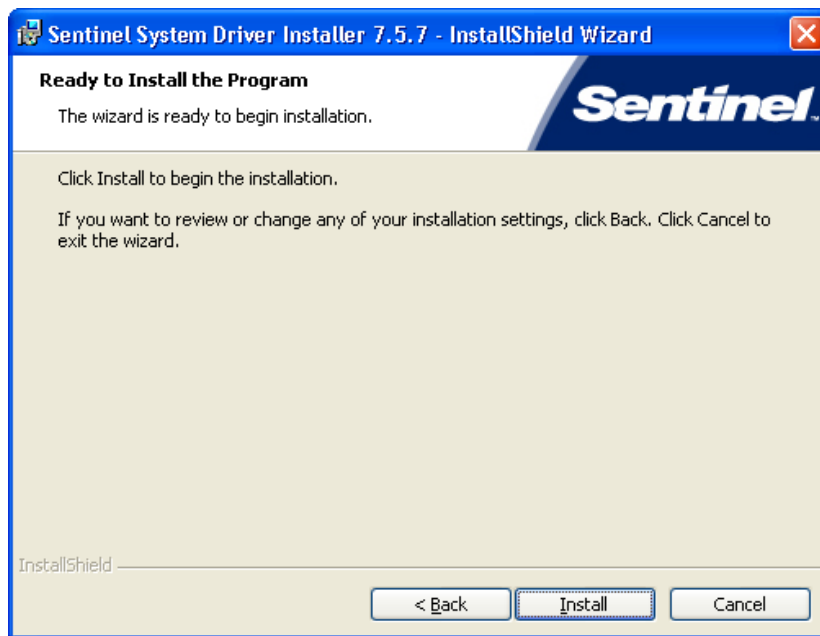
7. The Safenet Sentinel Pro driver installation will now be started to install the security license components.



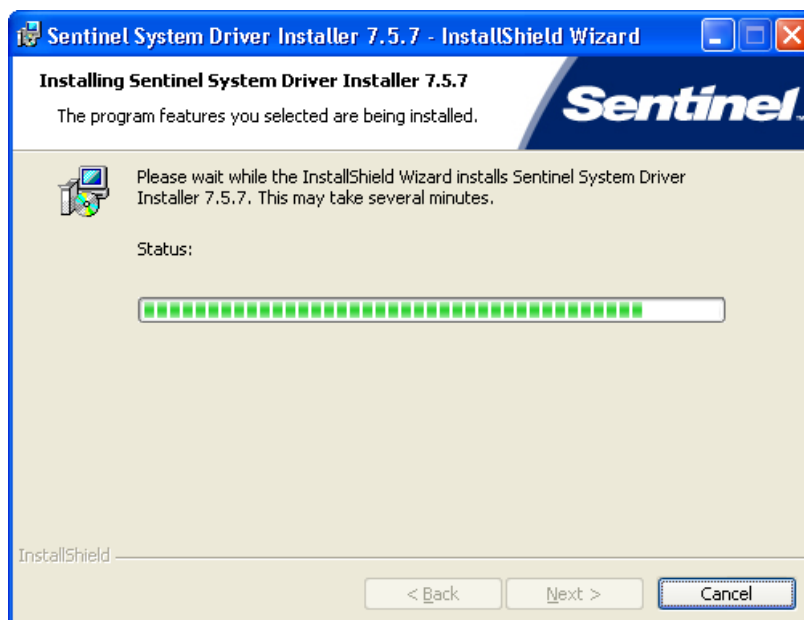
8. Select **Modify** setup type and click the **Next** button.



9. Click **Next** to start select the custom installation.



10. Click **Install** to start the Sentinel Driver installation.

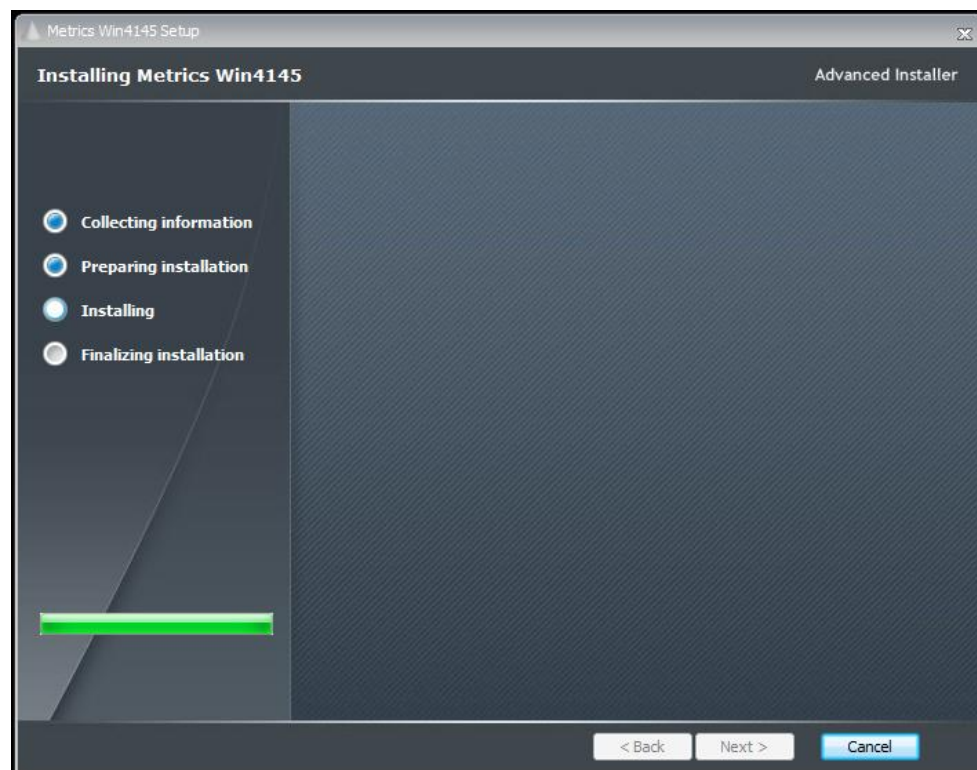


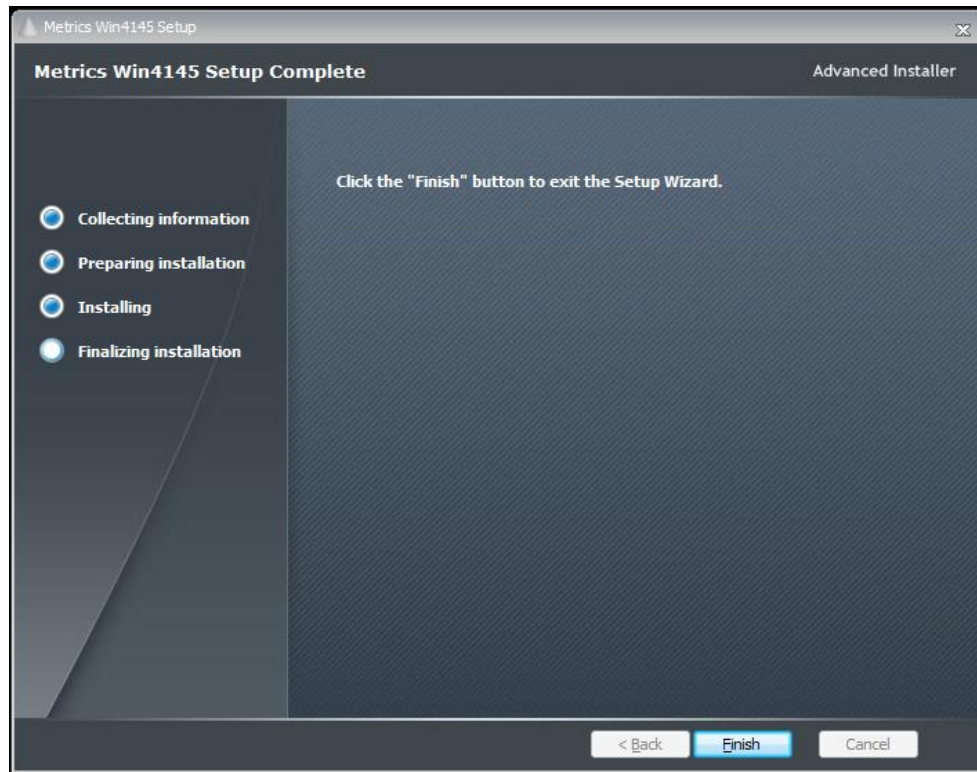
11. Allow the installation to complete.



Then click **Finish** to continue with the Metrics Win4145 installation.

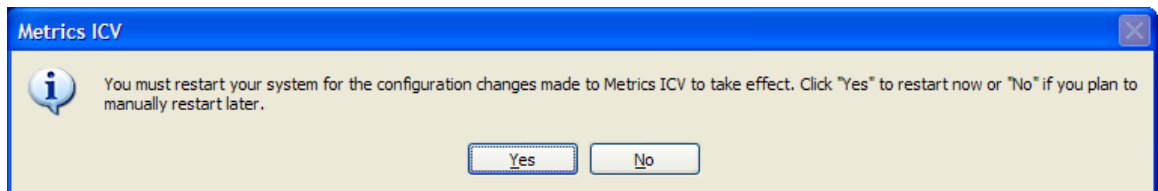
12. Allow the Metrics Win4145 installation to complete.





Then click **Finish** to complete the installation.

13. After the installation is finished, re-start the computer.



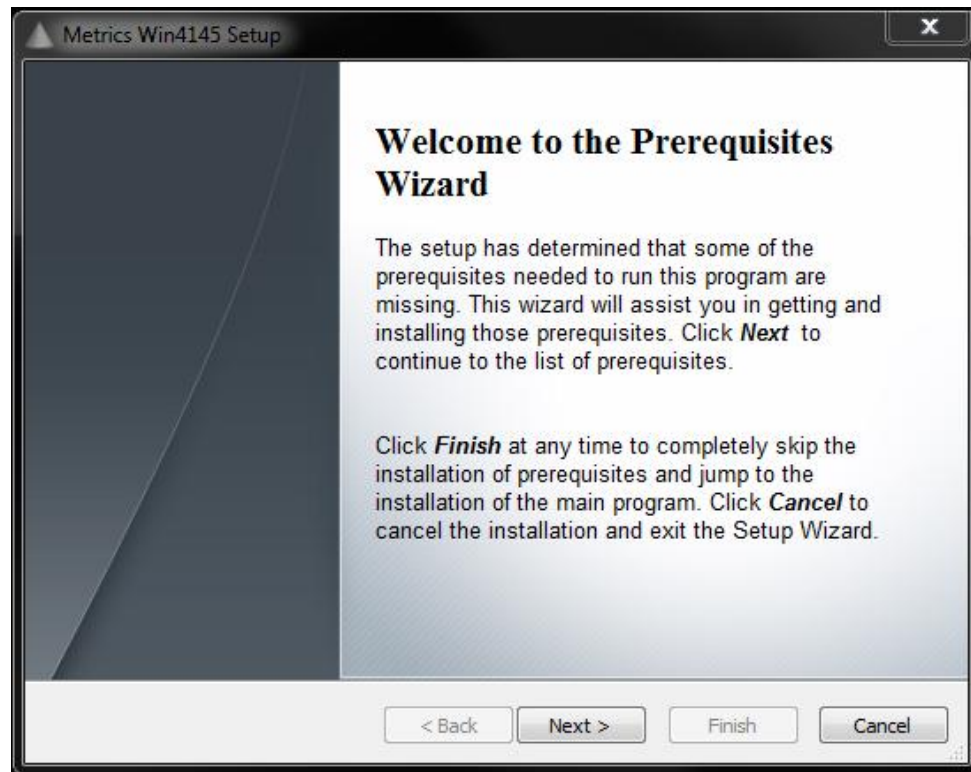
14. Connect the USB Security Key to the USB port of your computer. The Windows Hardware Manager should detect the USB device as Safenet USB SuperPro/UltraPro and should automatically install the driver for the device.

Note: It is recommended the security plug be connected directly to the computer instead of through a USB hub or keyboard port if possible.

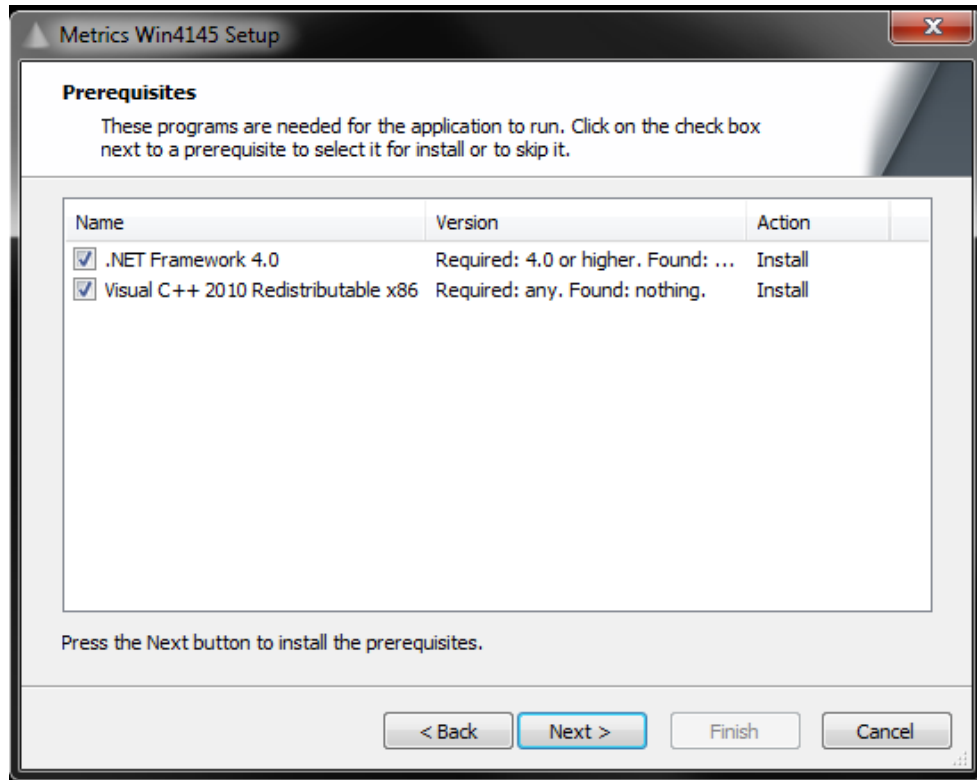
Procedure to Install Win4145 (new installation)

1. Insert the Metrics Win4145 install CD into the CD-ROM drive of your computer.
2. The CD-ROM should automatically start the Setup.exe installation program. If the installation does not start automatically then select right click on the CD drive icon in Windows Explorer and then select "explore". Select the **Setup.exe** application icon to start the installation program manually.

The installation will check for any prerequisites and start the Prerequisites Wizard to install the necessary software. Please note installation of some of these software components requires acceptance of the 3rd Party license agreements displayed during installation. Installation of some components can take some time so you should allow more time for installation if these components are not already installed on your workstation PC.



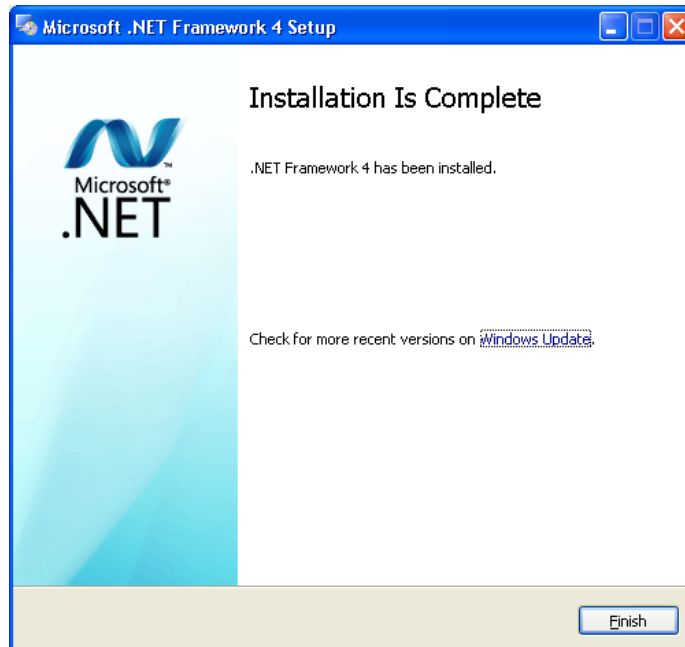
3. Click **Next** button on the "Welcome" panel.



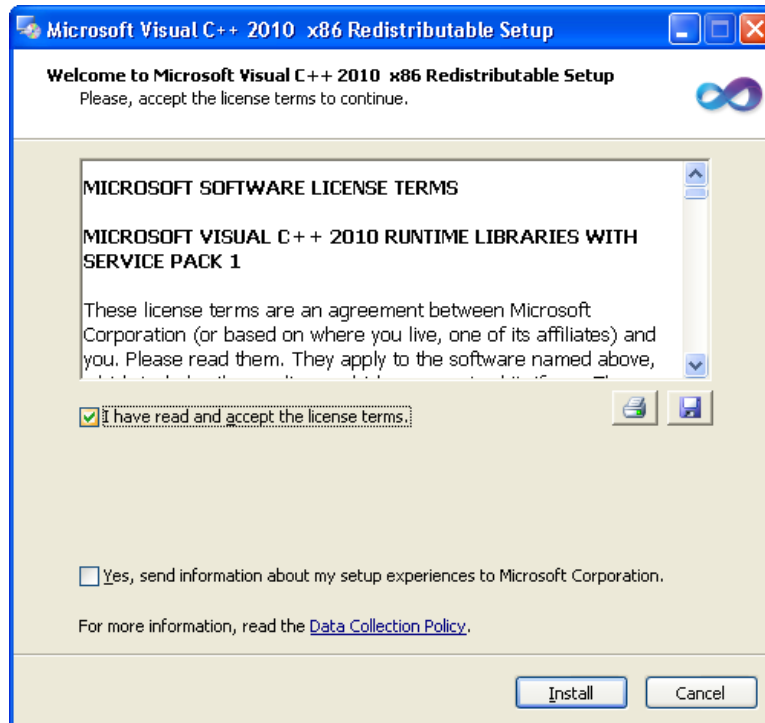
4. Click **Next** button on the "Prerequisites" panel.



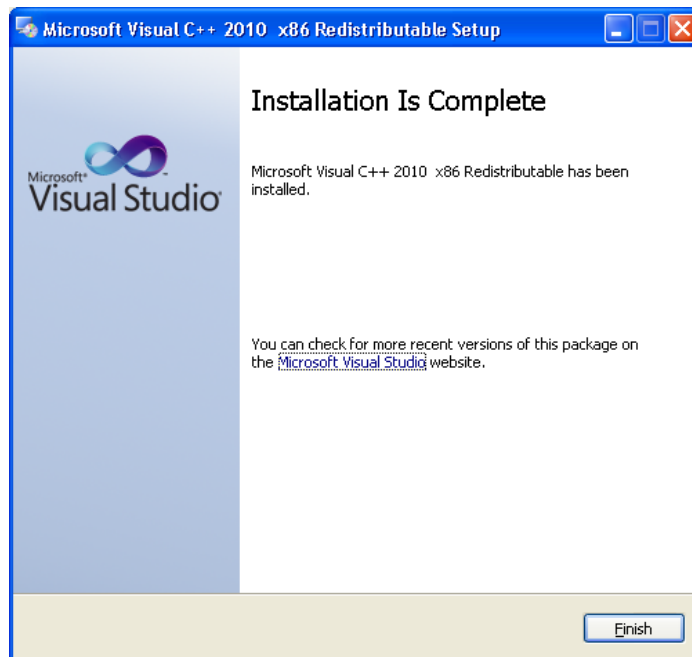
5. Click **I have read and accept the license terms** then click the **Install** button on the "Microsoft .NET Framework" panel.



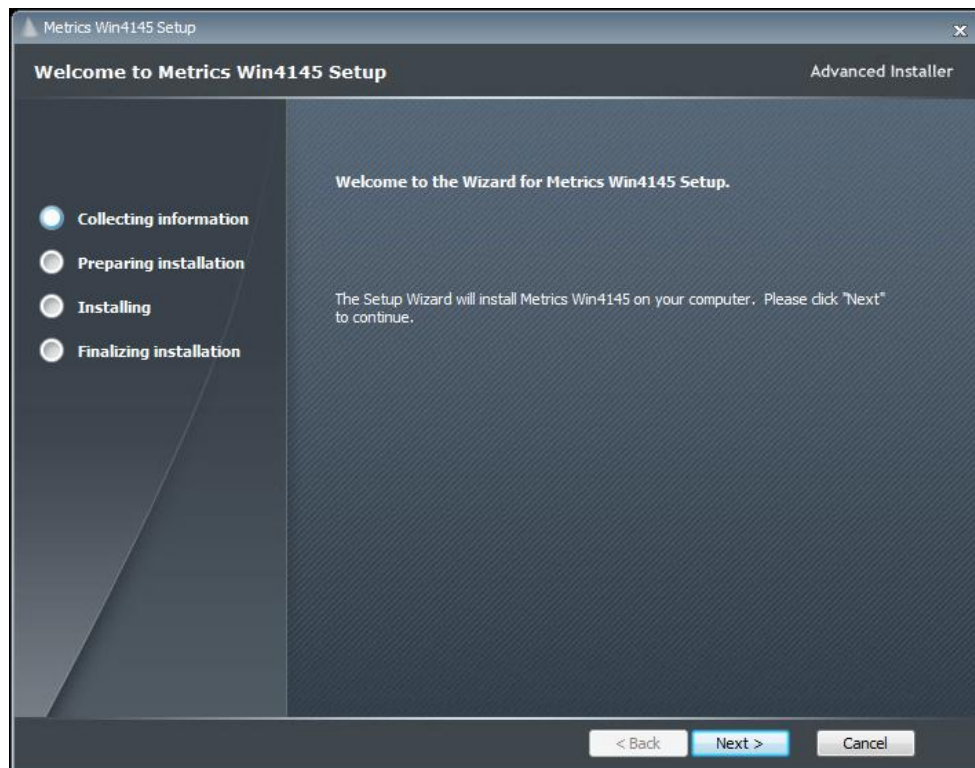
6. Click **Finish** to continue.



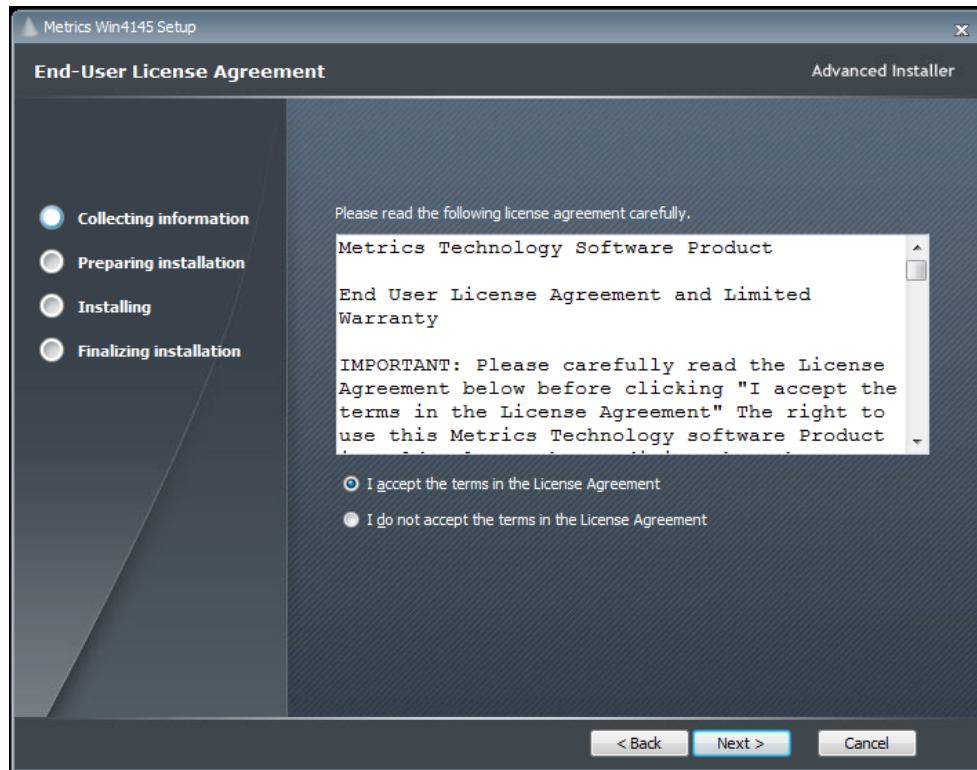
7. Click **I have read and accept the license terms** then click the **Install** button on the "Microsoft Visual C++ 2010 Redistributable" panel.



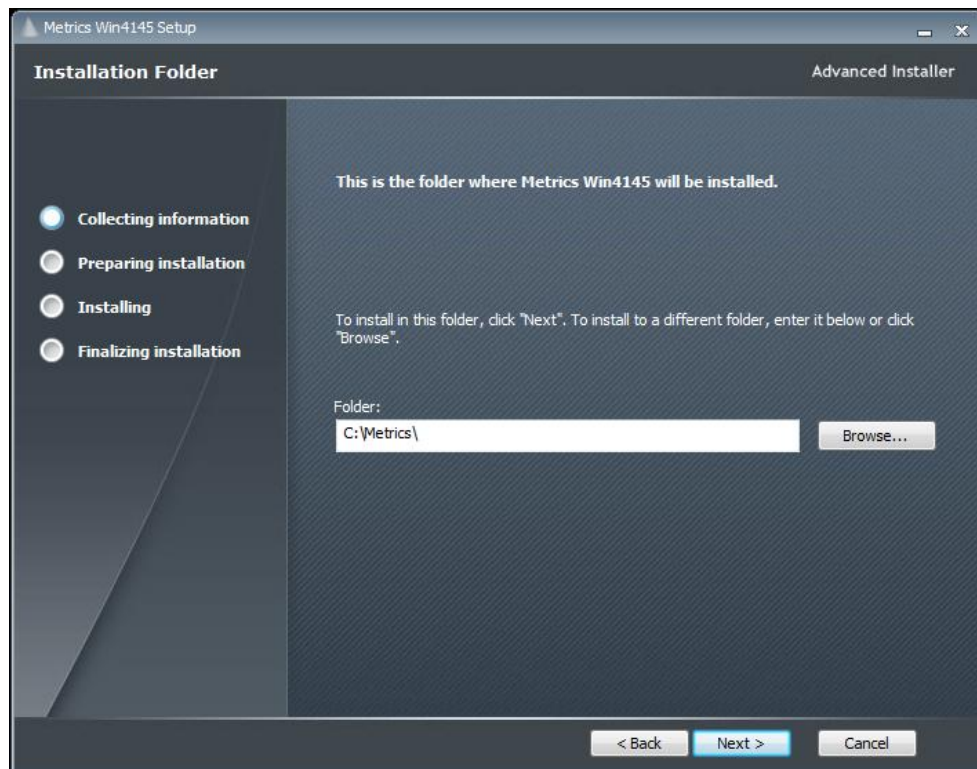
8. Click **Finish** to continue.



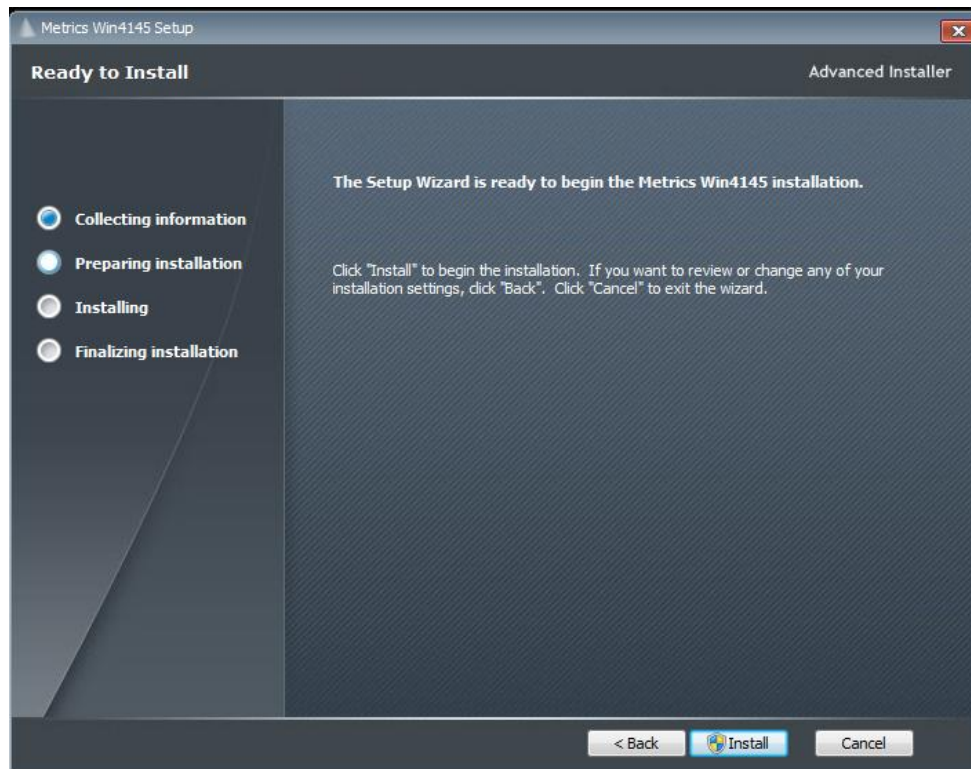
9. Click **Next** button on the "Welcome" panel.



10. Read the "Software License Agreement" and click the **I agree to the terms in the License Agreement** button to agree to the terms. Then click **Next**.



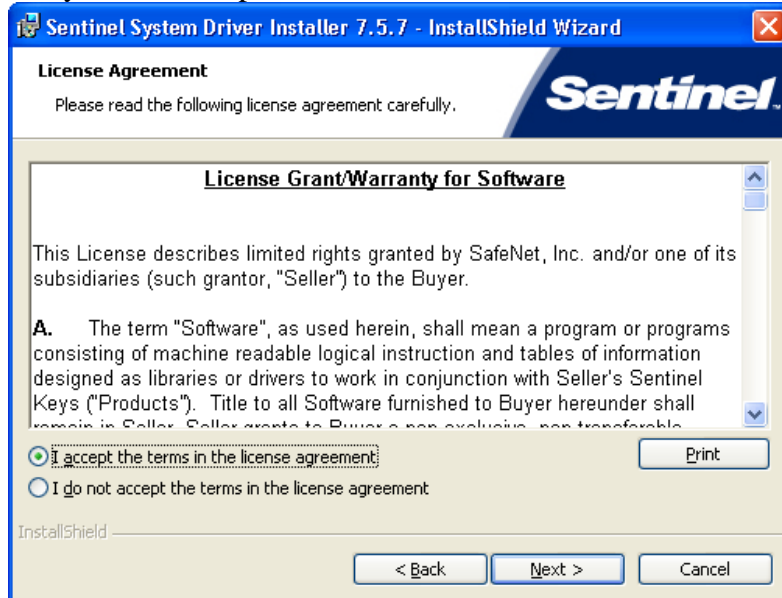
11. Choose "destination location" for installation and click the **Next** button.
Note: It is recommended to select the default C:\Metrics\ as the location to maintain compatibility with previous versions of the software backups.



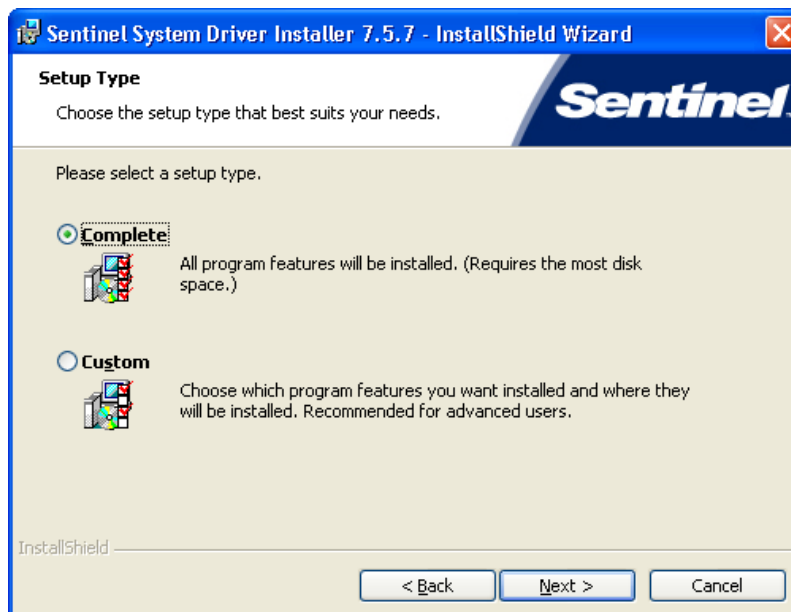
12. Click the **Install** button to begin the Metrics Win4145 installation.



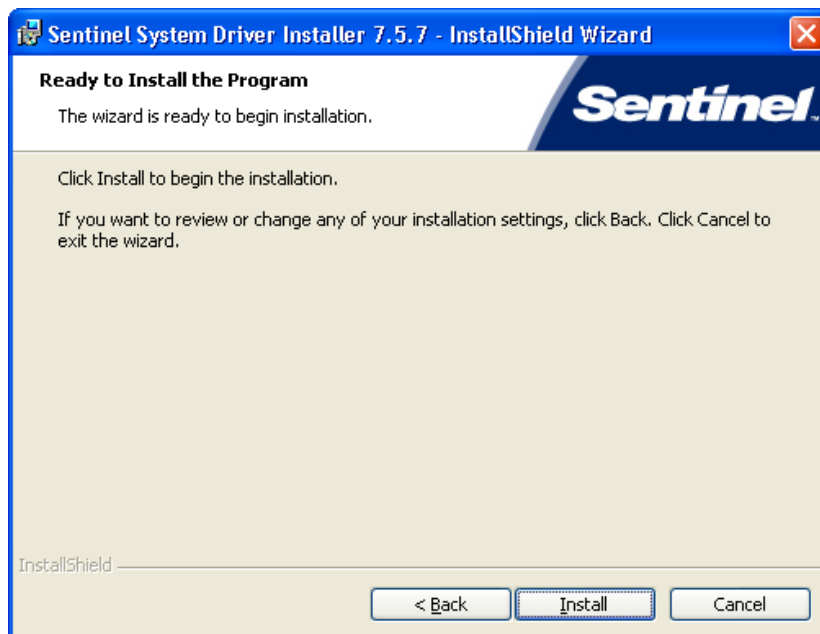
13. The Safenet Sentinel Pro driver installation will now be started to install the security license components.



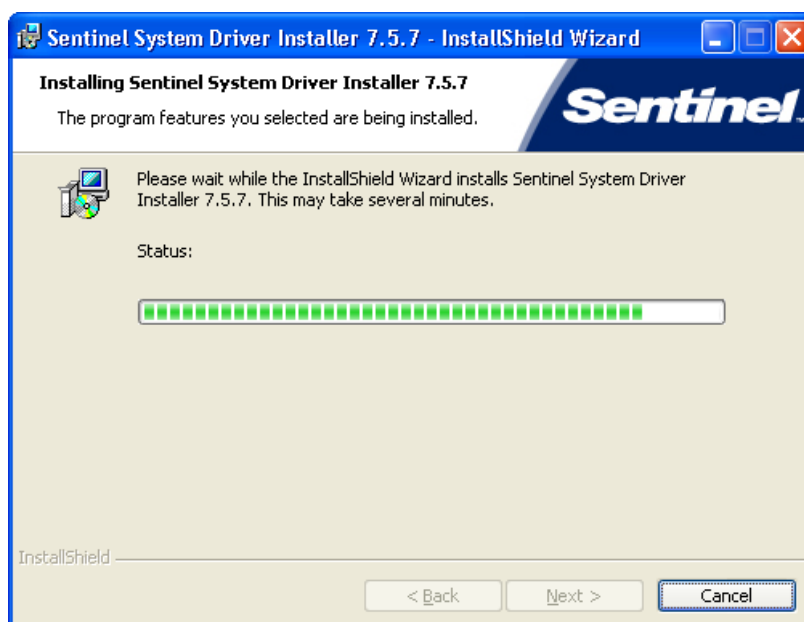
14. Read the "Software License Agreement" and click the **I agree to the terms in the License Agreement** button to agree to the terms. Then click **Next**.



15. Select "Complete" setup type and click the **Next** button.



16. Click **Install** to start the Sentinel Driver installation.

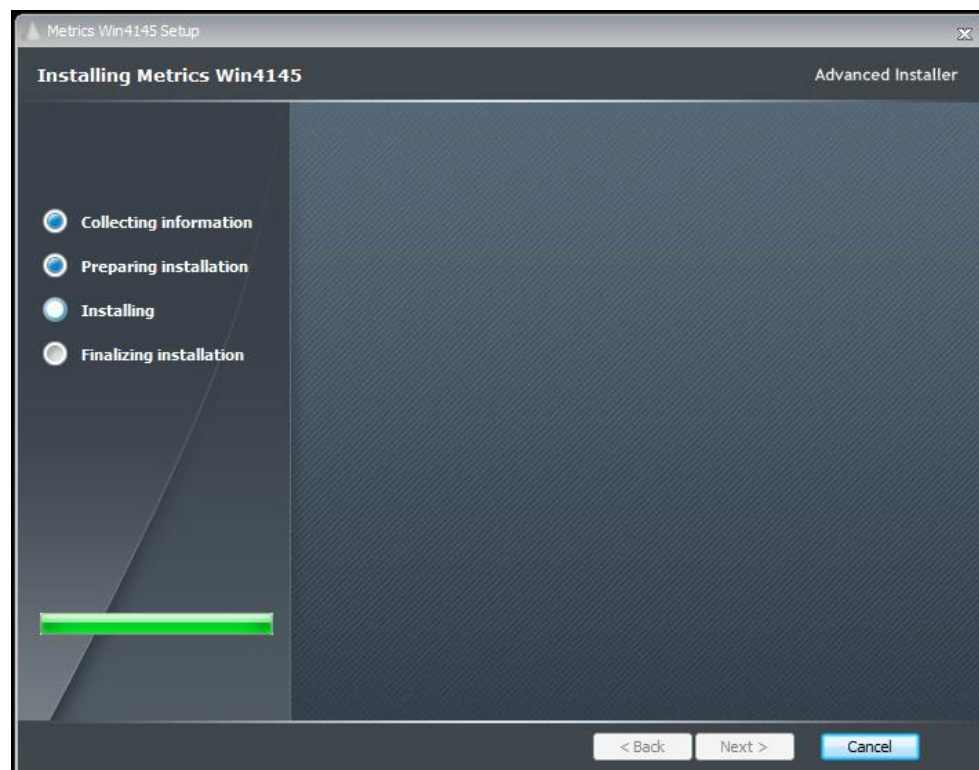


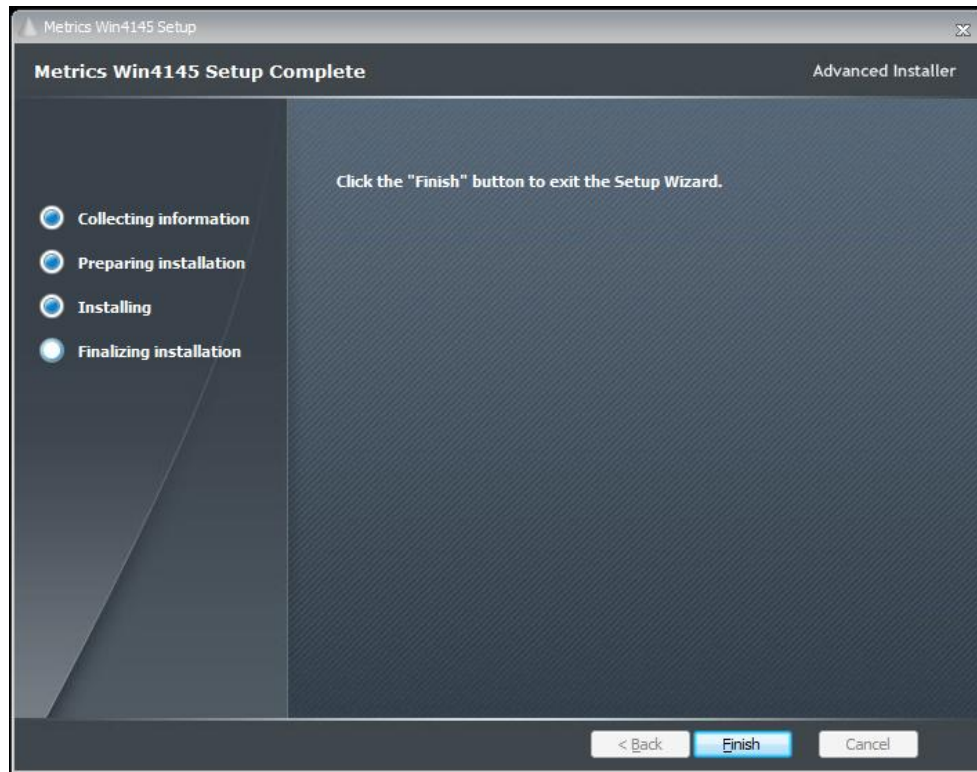
17. Allow the installation to complete.



Then click **Finish** to continue with the Metrics Win4145 installation.

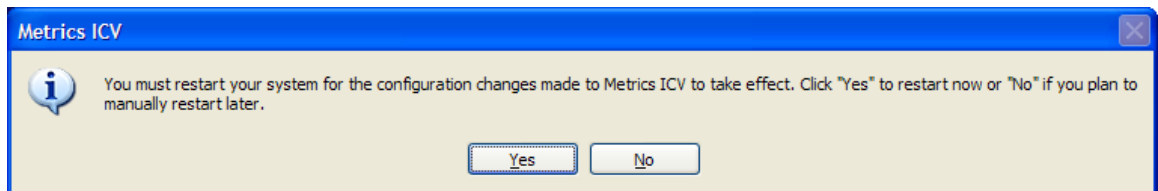
18. Allow the Metrics Win4145 installation to complete.





Then click **Finish** to complete the installation.

19. After the installation is finished, re-start the computer.



20. Connect the USB Security Key to the USB port of your computer. The Windows Hardware Manager should detect the USB device as Safenet USB SuperPro/UltraPro and should automatically install the driver for the device.

Note: It is recommended the security plug be connected directly to the computer instead of through a USB hub or keyboard port if possible.

Metrics Codewords

Metrics Technology software products use a combination of a hardware Security Key and Codeword. The unique combination of a Codeword and Security Key allows the software product to be run on a any workstation PC.

Software Codeword Information

There will be a codeword for each software component ordered. This information is made up of two (2) parts, the Registration Information and Codeword Information. We encourage all customers to register their software with Metrics Technology. Only registered users will receive technical support for their products.

Customer ID

The Customer ID is a number that has the form IAXXXXXA. Where the X is a number. Variations include IHXXXXA, MHXXXXA, and MKXXXXA. This number must match the number on the Security Key.

Product Desc

This is the Product Description. This will be the name of the product, such as Metrics Win4145.

Product ID

The The product ID is MTW4145 should be entered in the ID field

Version

This is the version of the software i.e. 4.1.0

Note: The version number and the codeword are matched. Thus, customers who have not purchased an upgrade will not be able to run it without purchasing the correct codeword.

Codeword Serial

Example Codeword

AWRZI-XXC6Z-HK3EM-1RHU0-GUJ8A-UPX0R

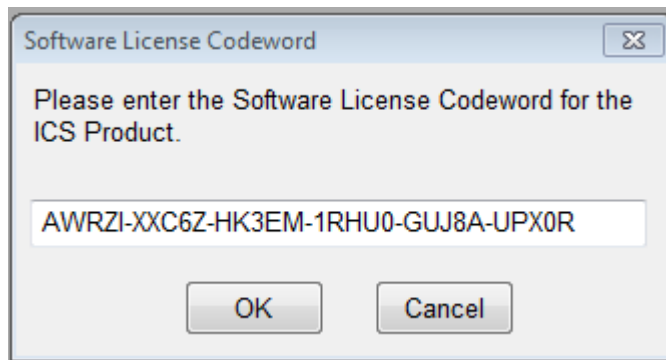
Note: It is recommended that you cut and paste the codeword from the registration e-mail sent from Metrics Technology Customer Service. If typing the codeword from the keyboard be careful not to transpose letters or numbers. The letter I can be confused for the number 1 and the letter O can be mistaken for the number 0.

Entry of the Codeword Serial Number

The software Codeword Serial number can be manually entered in Win4145.

To Enter the Win4145 Codeword Serial number:

2. Open the Win4145 program. In Win4145 select the menu item Help » Codeword to open the *Software License Codeword* window.



3. Enter the Win4145 Codeword Serial number supplied on the product registration certificate.
4. Click the **OK** button.



Win4145 Installation & Getting Started Guide

Metrics Win4145

Version 4.1.0

© Copyright 1999-2012, Metrics Technology, Inc.

All rights reserved.

Introductory Information

Goal of This Manual

The goal of this manual is provide a process for the user to be able to create a test and analyze the data with Metrics Win4145. A test setup will be created that measures the Threshold Voltage of a MOSFET device. The measured data will then be plotted and the V_{th} value will be extracted.

Chapter 1- Win4145 Getting Started Guide

Introduction

The first Chapter of the Self-Paced Guide introduces the Metrics Win4145 software. This Chapter also provides important information on software versions and support.

Please note that each Chapter builds upon the information presented in the previous Chapters. It is recommended that the Guide is followed in the order presented.

Topics Covered

- What is Metrics Win4145 Software?
- Overview of Metrics Win4145 Software
- Updating Versions
- Support

What is Metrics Win4145 Software?

The Metrics Win4145 Software is an application designed for semiconductor characterization applications. Measurements for different technologies can be created in a matter of minutes without programming. It is based on the industry standard Metrics ICS software and provides drivers for the HP4145A/B.

Metrics Win4145 Controls:

- Semiconductor Parameter Analyzers
 - HP 4145A
 - HP 4145B

Overview of Metrics Win4145 Software

Metrics Win4145 Software allows provides an environment for the collection of data in three steps: Setup, Execute, and Analyze. The Setup of a Measurement typically takes no more than 1-2 minutes.

Win4145 supports several measurement modes to accommodate most testing methods.

The Analysis tools in Win4145 include plotting and data extraction. Once the functions are created, they can be saved with the data.

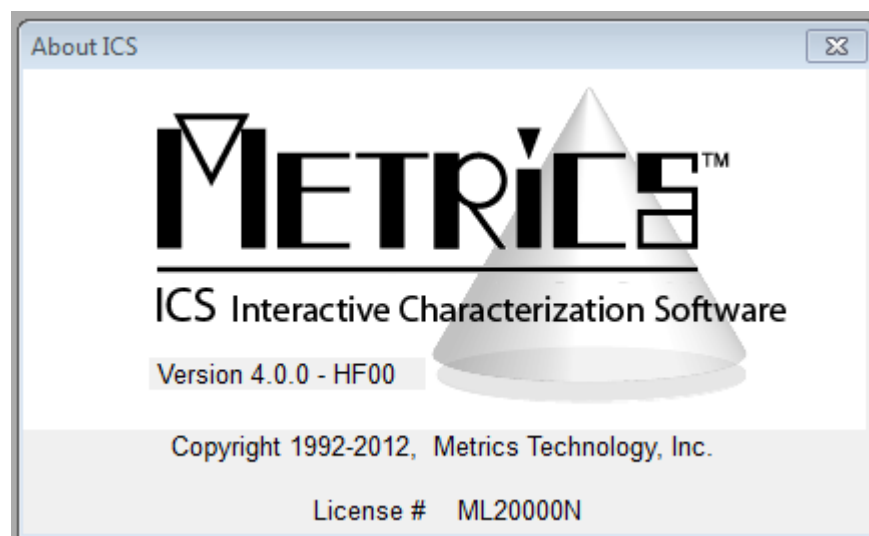
The advantage of Win4145 is that once a test is created and saved it can be re-opened and used again, including the analysis.

Determining Software Version

The software version and build date are very important when requesting support. Without this information it is impossible to provide efficient service. Please be prepared to provide this information when seeking support.

To determine the software version:

1. Open the Metrics Win4145 Software.
2. Click the Help menu item.
3. Click the About item.



Updating the Metrics Win4145 Software

Please keep your software up to date by downloading and installing the Metrics Technology Hot Fixes. Your software will remind you monthly with a simple reminder message to check for updated Hot Fixes. Often the issues addressed in the updates are ones that you may just now be encountering.

Metrics Technology provides Service Patches to registered customers. Once a patch has been created and verified by Metrics Technology, it is placed on our web site (www.metricstech.com).

The patch can be downloaded from the web site. Please note the patches are very large and will take time to download depending upon your connection speed. If you have not registered your software, please do so now to become eligible for software updates and support.

Support

Metrics Technology provides technical support to customers for one year after the purchase of the Metrics Win4145 software. This support period includes a ninety day period when telephone support is available. The remainder of the year's support is provided by email. Please refer to the Metrics Technology website www.metricstech.com for options available to extend the support period.

All customers who request support must have registered their copy of Win4145 with Metrics Technology. The form is provided as part of the software package or you can visit the Metrics Technology web site and select the support link to access the registration forms.

Support is available from Metrics Technology

Contact Metrics Technology by:

- Reviewing our [web site](#).
- Logging in to your account at the Metrics Technology website and submitting a support request.

To receive Technical Support services you will need:

- Registration Number (Customer ID)
- Version and Hot Fix Number
- Complete description of issue, including any error messages

Chapter 2- Selecting Instruments

Introduction

The Module introduces the Metrics Win4145 (Control Software for HP4145A/B) measurement engine and demonstrates how to create measurements with it.

Topics Covered:

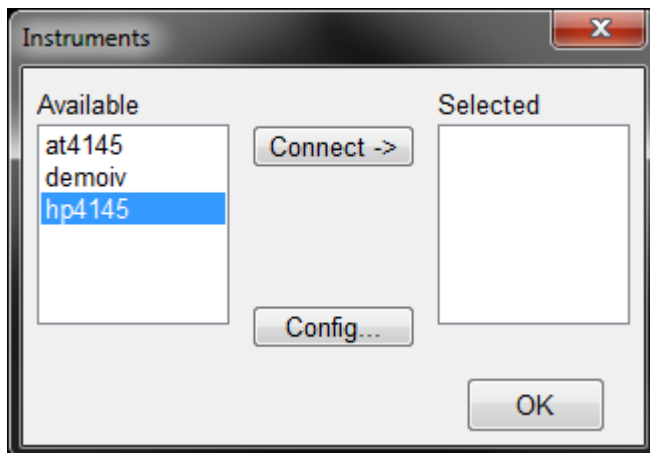
- Selecting an Instrument
- Configuring the Instrument
- Polling an Instrument

Selecting an Instrument Driver

Before creating a measurement, Win4145 must know what instrument is being used. This is accomplished by configuring Win4145. Once an instrument has been configured, Win4145 will remember this configuration. The only time Win4145 must be reconfigured is when the instrument is changed or the ICS40.INI file is erased.



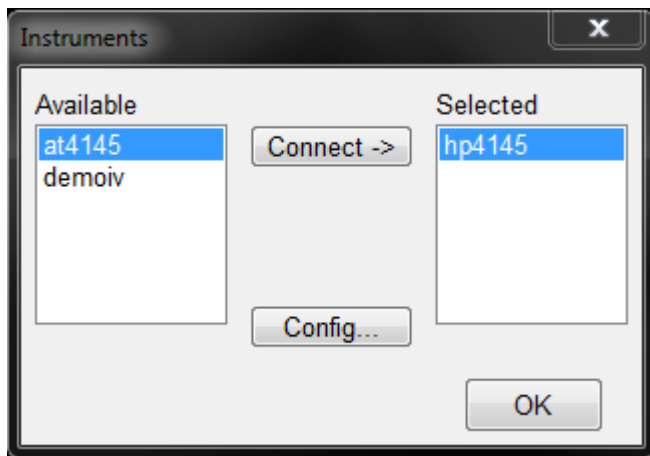
1. Click the **Select Instrument** button.
2. Highlight the instrument to be added and click the **Connect** button.



Configuring the Instrument

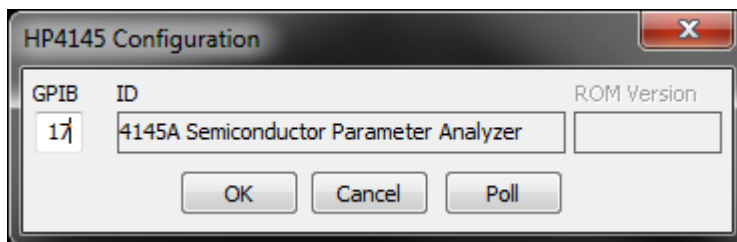
After the Instrument driver is selected, it must be configured.

1. Highlight the instrument to be configured and click the **Config** button.
2. Enter the GPIB address.



Polling an Instrument

To confirm that the instrument and Win4145 are communicating properly, poll the instrument.



1. Click the **Poll** button.
2. Click the **OK** button to close the Configuration window.
3. Click the **OK** button to close the Instruments window.

Chapter 3- Creating Measurements

Introduction

The Module introduces the Metrics Win4145 (Interactive Characterization Software) measurement engine and demonstrates how to create measurements with it. Special demonstration drivers have been created to allow the development to be independent of the instrument. For details about the instrument drivers provided with Metrics Win4145, please refer to the Metrics Win4145 documentation. The steps to creating a test method will be covered.

Topics Covered

- Creating a Sweep Measurement
- Creating a Spot Measurement
- Creating a Time-Based Measurement

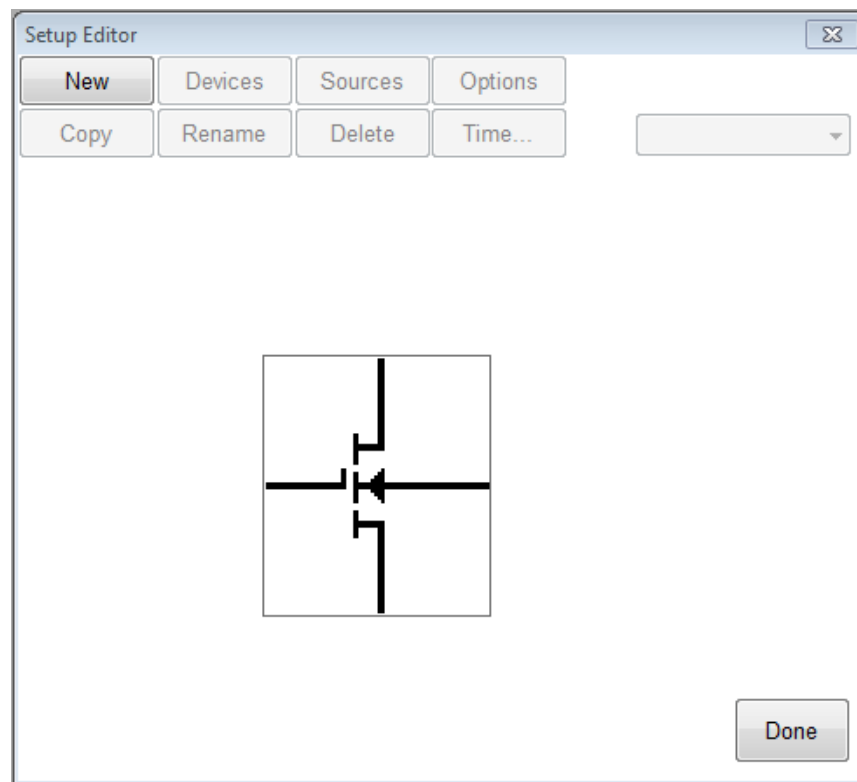
Create a Sweep Measurement

The following example demonstrates how to create a sweep measurement using Win4145. This example uses the demonstration driver within Win4145.

To Create a Sweep:

1. Open the setup editor.

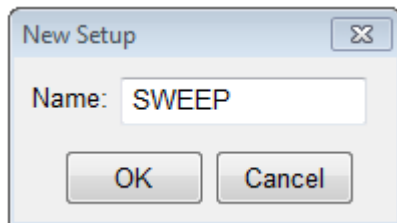
The Setup Editor is the place in Win4145 where the measurement is configured. It can be opened by clicking the Setup Editor button.



2. Click **New** to create a new setup

3. Name the Measurement Setup

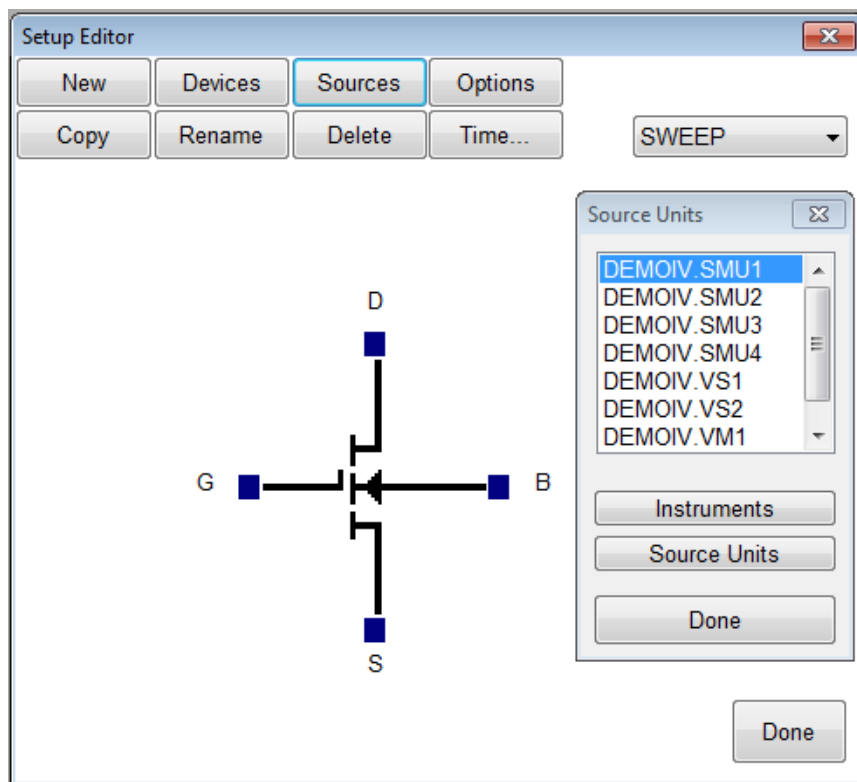
Each measurement must have a unique name. Before the measurement can be created, it must be given a name. To name the measurement:



- a. Entering a name then click the **OK** button.

4. Select Source Units

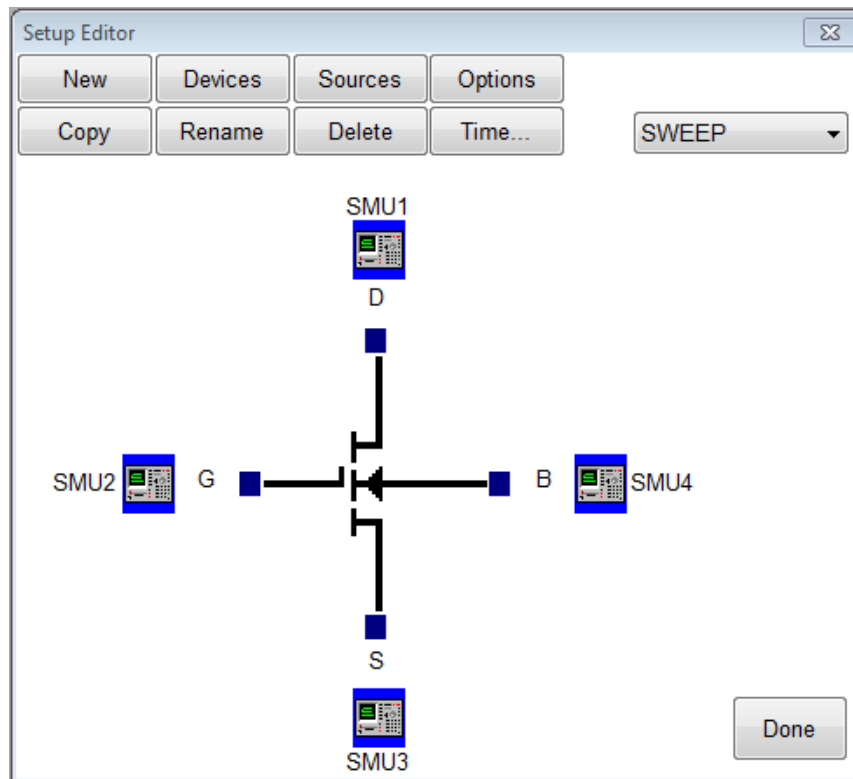
The source units correspond to the outputs of the instrument you are using. Metrics Win4145 provides a graphical way to document the connections for later reference. To add a source unit:



- a. Click on the **Sources** button to open the Source Units window.
- b. Highlight the specific unit.
- c. Click the blue box beside the device lead in the Setup Editor.

To remove a source unit:

- a. Highlight the attached unit.
- b. Click the blue box beside the device lead in the Setup Editor.
- c. Click the **Yes** button when asked if "Do you really want to remove the source".



Note: The graphic is merely a representation of the device. The software does not expect behaviors from the data. Thus, the pin-out does not have to exactly match, rather it is only for reference.

5. Configure Source Units.

In this example we are creating a sweep source, so we must configure the source unit properly. To setup a sweep source:

A screenshot of the 'SMU Setup' dialog box. The 'Source' is set to 'SMU1'. Under 'Stimulus', 'Voltage' is selected. Under 'Measure', both 'Voltage' (labeled 'VD') and 'Current' (labeled 'ID') are checked. 'Sweep Time' has 'Hold' at 0.0000 and 'Delay' at 0.0000. 'Force Conditions' shows 'Mode' as 'SWEEP' and 'Type' as 'LIN'. 'Start' is 0.0000 Volts, 'Stop' is 5.0000 Volts, 'No. Points' is 51, 'Compl' is 0.1000, and 'Step Size' is 0.1000 Volts. 'Time Stim' has 'Voltage' selected. 'Time Measurement Bias' has 'Time Bias' at 0.0000 Volts and 'Compliance' at 0.1000. 'OK' and 'Cancel' buttons are at the bottom.

1. Select the stimulus type.
2. Select the values to be measured (see note below).
3. Click the blue box beside the device lead in the Setup Editor.
4. Select the sweep timing (see note below).
5. Select the Source Mode. In this case we want it to be **Sweep**.
6. Setup the sweep parameters.

Note: Most SMU's can only measure the signal that is not being sourced. Therefore in this case we have selected the Stimulus to be Voltage resulting in the Current being measured. The values returned for Voltage in this case would be the calculated voltage steps. The opposite is true when the Stimulus mode is set to Current. The Sweep Time parameters are to control the rate of the sweep. Please note that these inputs vary for different instruments.

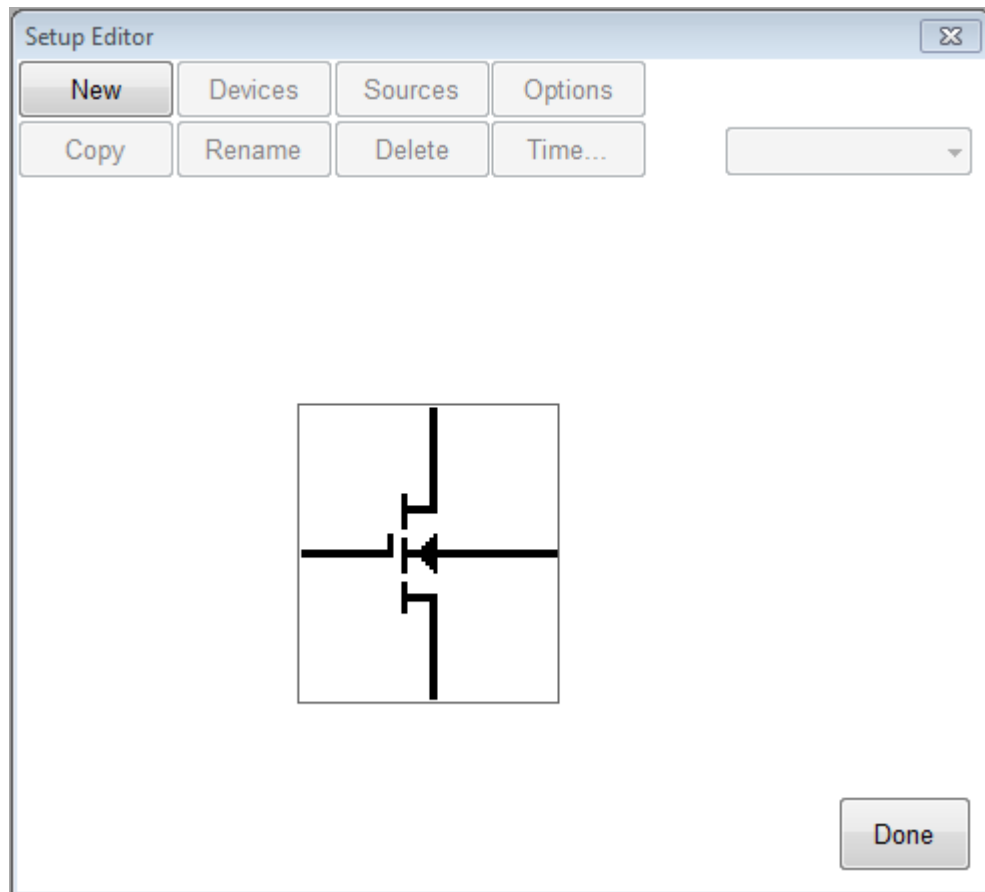
Create a Spot Measurement

In this example we will create a spot (or single point) measurement. Most of the steps are the same or similar to creating a sweep measurement. The first step is to open the setup editor. The setup editor can be opened by clicking the Setup Editor button.

To Create a Spot Measurement:

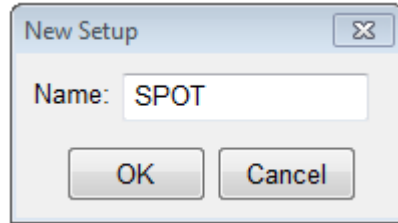
1. Open the setup editor.

The Setup Editor is the place in Win4145 where the measurement is configured. It can be opened by clicking the Setup Editor button.



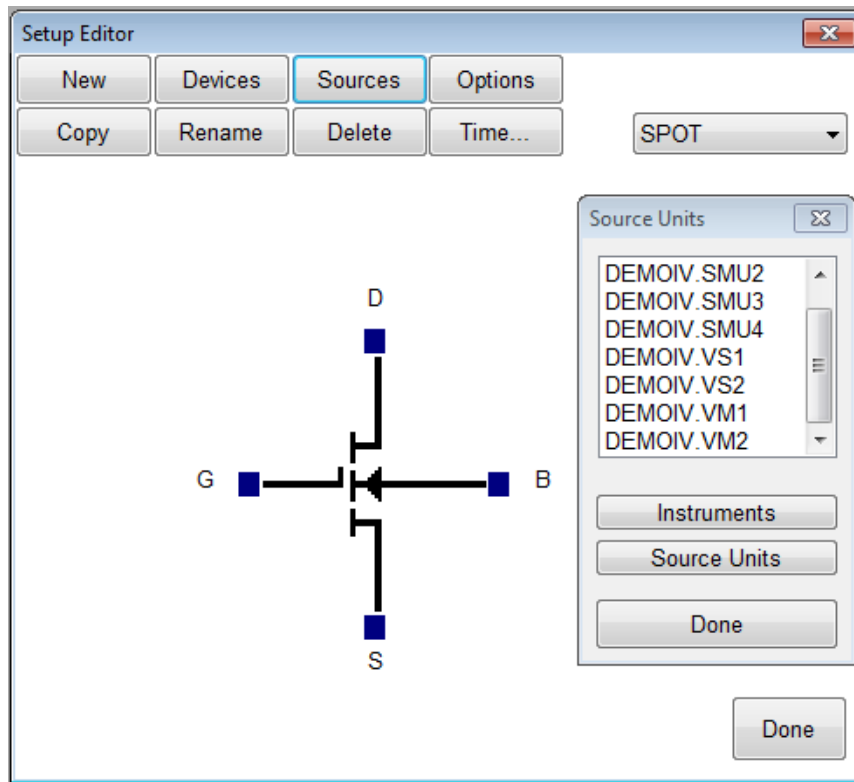
2. Name the Measurement Setup.

Each measurement must have a unique name. Before the measurement can be created, it must be given a name. To name the measurement:

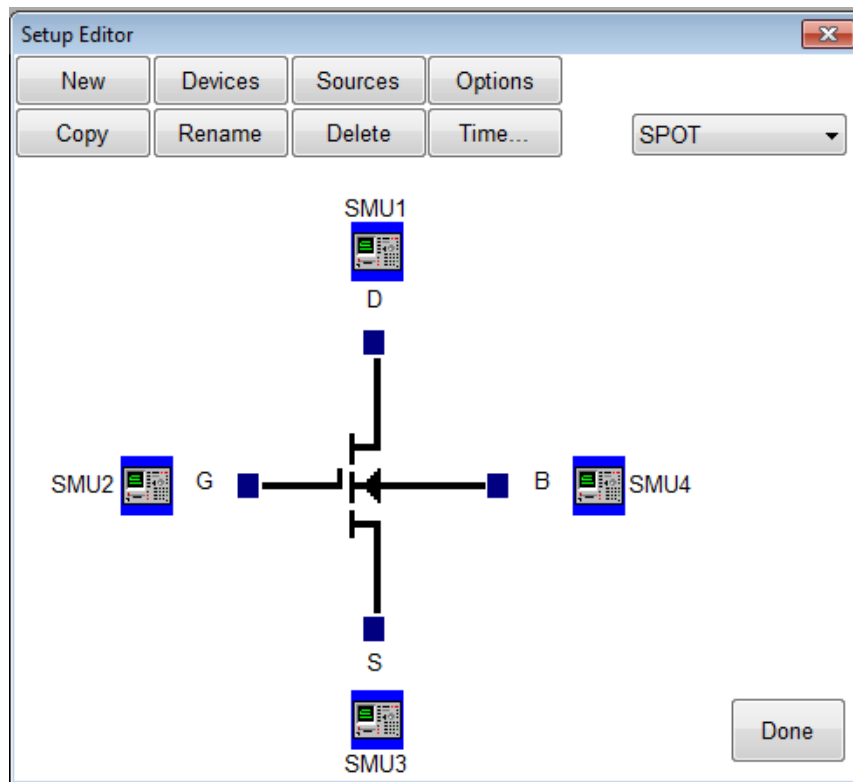


- Click the **New** button and type in a name.
- Click the **OK** button after entering the name.
- Select Source Units.

The source units correspond to the outputs of the instrument you are using. Metrics Win4145 provides a graphical way to document the connections for later reference. To add a source unit:



- Click on the Source Units button to open the Source Units window.
- Highlight the specific unit.
- Click the blue box beside the device lead in the Setup Editor.



To remove a source unit:

- Highlight the specific unit.
- Click the blue box beside the device lead in the Setup Editor.
- Click the **Yes** button.

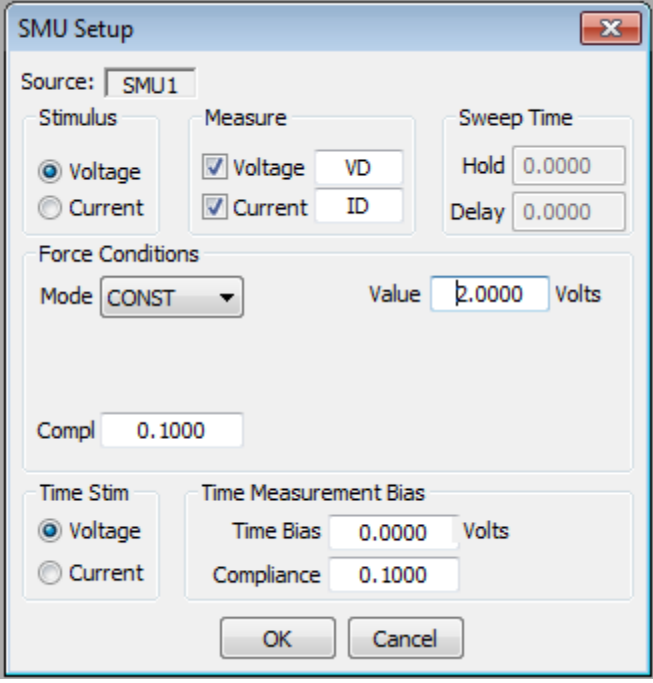
Note: The graphic is merely a representation of the device. The software does not expect behaviors from the data. Thus, the pin-out does not have to exactly match, rather it is only for reference.

3. Configure Source Units.

In this example we are creating a spot source, so we must configure the source unit properly. To setup a spot source:

SMU1

D



The SMU Setup dialog box is shown with the following settings:

- Source: SMU1
- Stimulus: ☒ Voltage, ☐ Current
- Measure: ☒ Voltage (VD), ☒ Current (ID)
- Sweep Time: Hold 0.0000, Delay 0.0000
- Force Conditions: Mode CONST, Value 2.0000 Volts
- Compl 0.1000
- Time Stim: ☒ Voltage, ☐ Current
- Time Measurement Bias: Time Bias 0.0000 Volts, Compliance 0.1000

Buttons: OK, Cancel

1. Select the stimulus type.
2. Select the values to be measured (see note below).
3. Select the Source Mode. In this case we want it to be **Const**.
4. Setup the source bias.

Note: Most SMU's can only measure the signal that is not being sourced. Therefore in this case we have selected the Stimulus to be Voltage resulting in the Current being measured. The values returned for Voltage in this case would be the calculated voltage steps. The opposite is true when the Stimulus mode is set to Current. Please note that these inputs vary for different instruments.

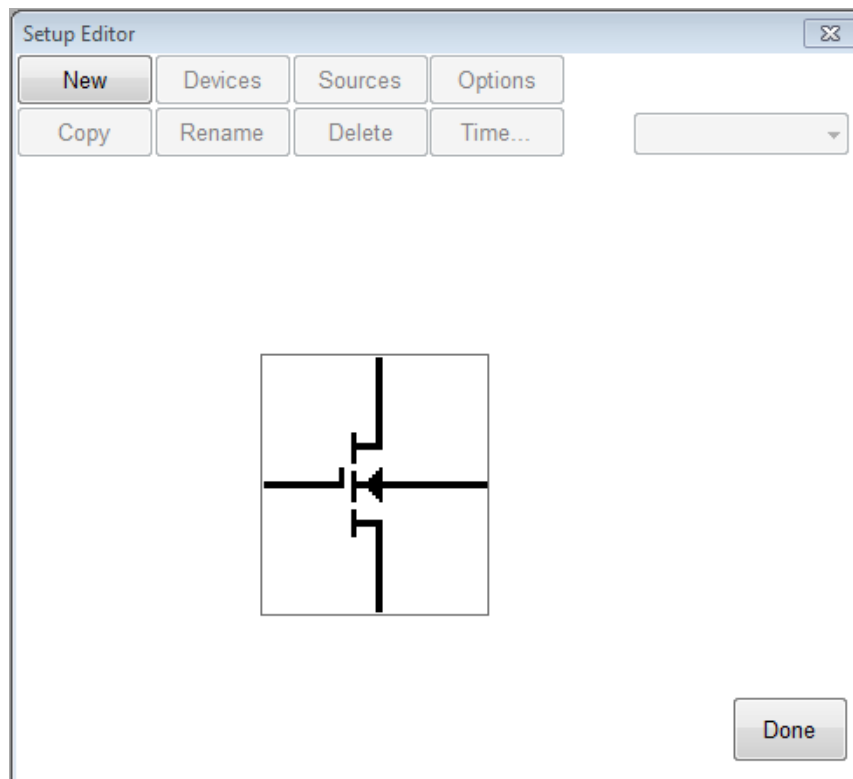
Creating a Time-Based Measurement

In this example we will create a time-based measurement. Most of the steps are the same or similar to creating a spot measurement. The first step is to open the setup editor.

To Create a Time-Based Measurement:

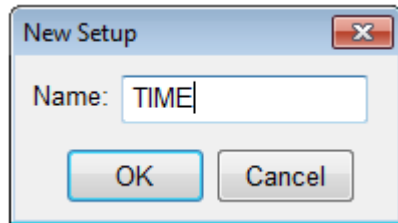
1. Open the setup editor.

The Setup Editor is the place in Win4145 where the measurement is configured. It can be opened by clicking the Setup Editor button.

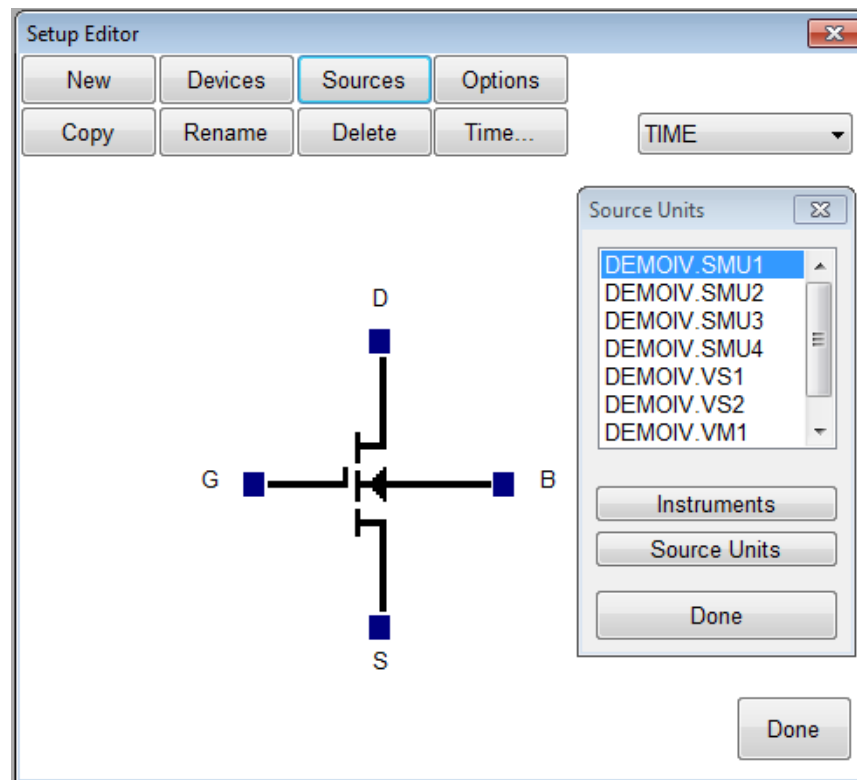


2. Name the Measurement Setup.

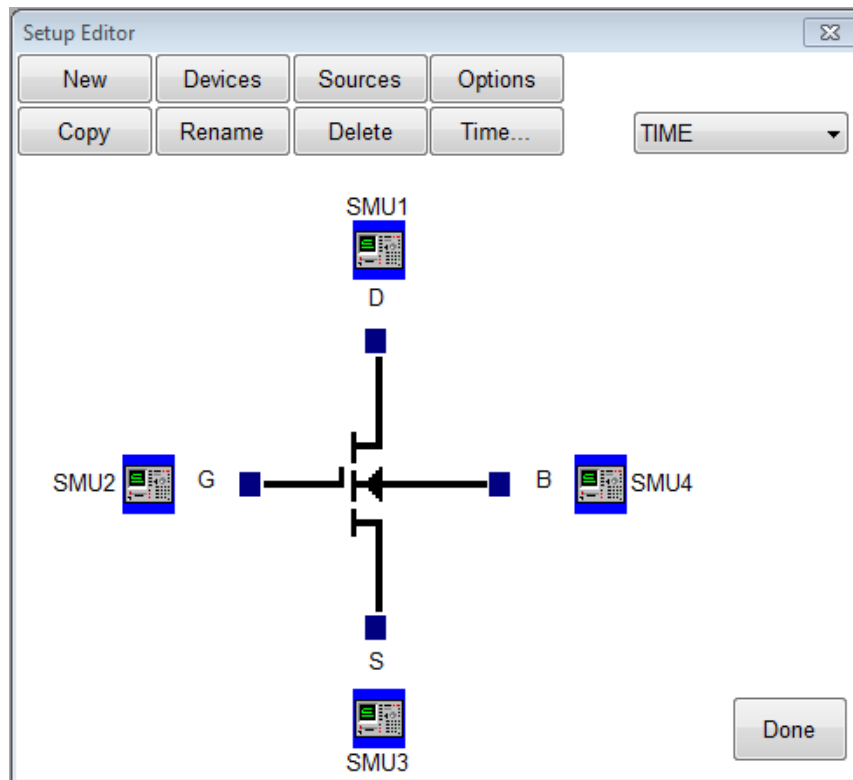
Each measurement must have a unique name. Before the measurement can be created, it must be given a name. To name the measurement:



- a. Click the **New** button and type in a name.
- b. Click the **OK** button after entering the name.
- c. Select Source Units.



The source units correspond to the outputs of the instrument you are using. Metrics Win4145 provides a graphical way to document the connects for later reference. To add a source unit:



- Click on the Source Units button to open the Source Units window.
- Highlight the specific unit.
- Click the blue box beside the device lead in the Setup Editor.

To remove a source unit:

- Highlight the specific unit.
- Click the blue box beside the device lead in the Setup Editor.
- Click the **Yes** button.

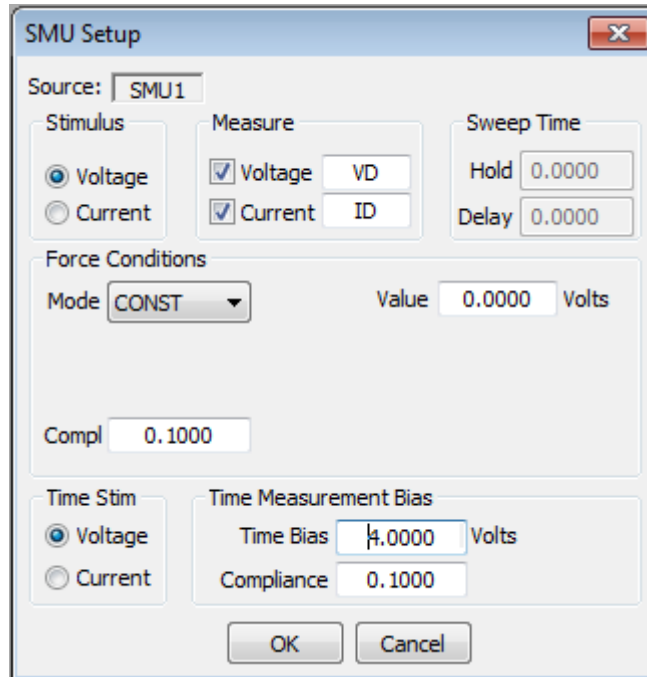
Note: The graphic is merely a representation of the device. The software does not expect behaviors from the data. Thus, the pinout does not have to exactly match, rather it is only for reference.

3. Configure Source Units.

In this example we are creating a time stimulus source, so we must configure the source unit properly. To setup a time stimulus source:

SMU1

D



The SMU Setup dialog box is shown with the following settings:

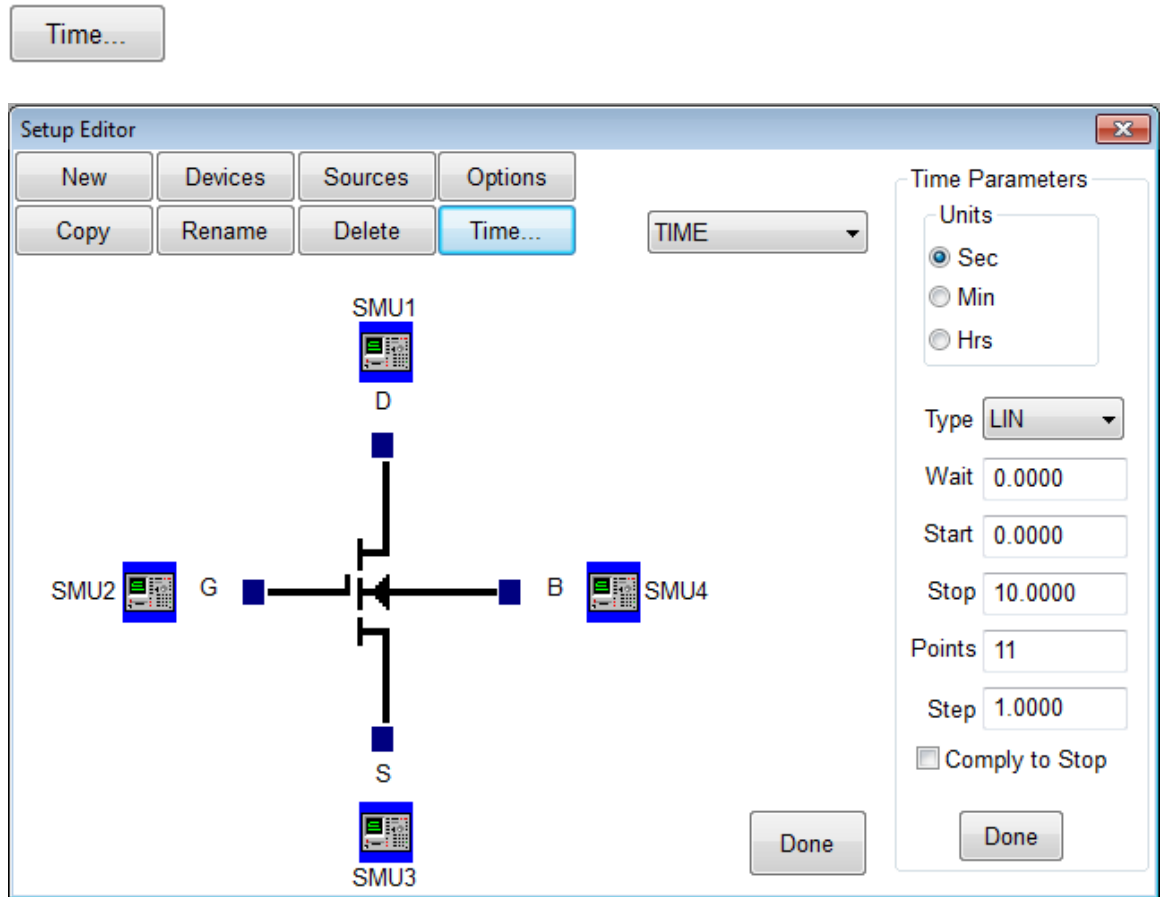
- Source: SMU1
- Stimulus: ☒ Voltage, ☐ Current
- Measure: ☒ Voltage (VD), ☒ Current (ID)
- Sweep Time: Hold 0.0000, Delay 0.0000
- Force Conditions: Mode CONST, Value 0.0000 Volts
- Compl 0.1000
- Time Stim: ☒ Voltage, ☐ Current
- Time Measurement Bias: Time Bias 4.0000 Volts, Compliance 0.1000
- Buttons: OK, Cancel

- Select the stimulus type.
- Select the values to be measured (see note below).
- Select the Time Bias and Compliance.

Note: Most SMU's can only measure the signal that is not being sourced. Therefore in this case we have selected the Stimulus to be Voltage resulting in the Current being measured. The values returned for Voltage in this case would be the calculated voltage steps. The opposite is true when the Stimulus mode is set to Current. Please note that these inputs vary for different instruments.

4. Set Time Parameters.

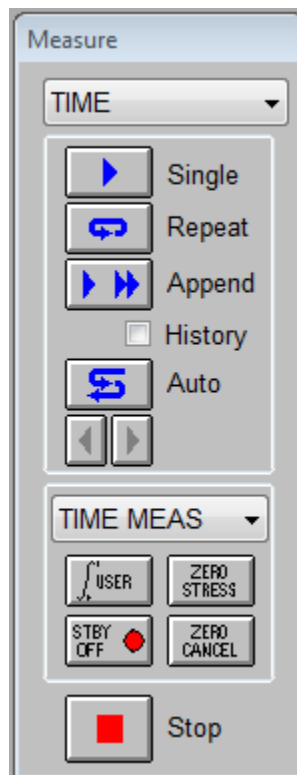
We must specify the time interval that the measurements will be made. To setup the time parameters:



- Select the Time Units.
- Select the sampling type.
- Enter the Wait time.
- Enter the Start, Stop, and Step values. Select the Comply to Stop, option if desired.

5. Set Measurement Mode.

We must specify the measurement mode as **Time Meas**. To setup the measurement mode:



- a. Select the Setup.
- b. Select the **TIME MEAS** mode.

Chapter 4- Executing Measurements

Introduction

This Module details the execution of the measurement using Win4145.

Note: When creating new tests it is necessary that the data be measured before the analysis is created.

Topics Covered

- Measurement Remote Control
- The Date Window

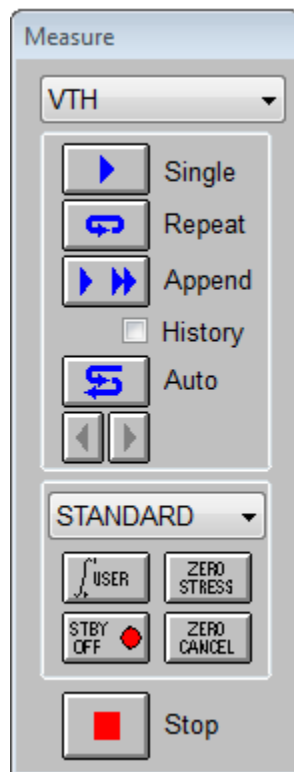
Measurement Remote Control

Metrics Win4145 contains a tool named the Measurement Remote Control. This control is activated by clicking the Measure button on the Win4145 toolbar.



This toolbar contains buttons to begin the measurement as well as menus to select the measurement and mode.

Note: The remote control window can be moved anywhere on the desktop.



The Measurement Remote Control has four sections.

Section 1: Measurement Menu

This pull-down menu allows the selection of a specific test to be executed.

Section 2: Execute Buttons

This section contains the buttons that will start the measurement. Several modes of measurement are available and the buttons correspond to the selected mode.

Section 3: Measurement Mode Menu

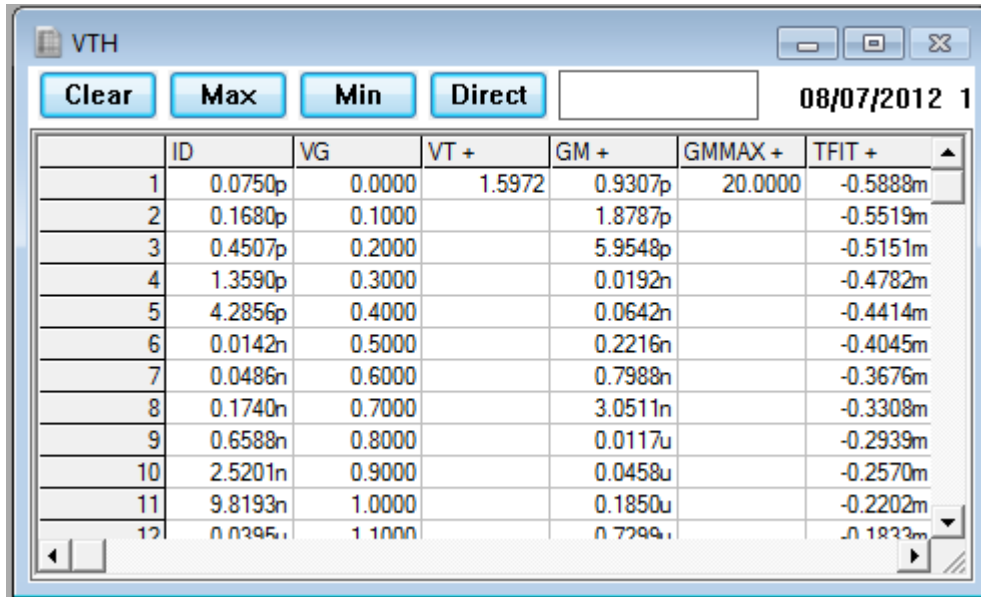
This pull-down menu allows the selection of the measurement mode. Most measurements are made in standard mode, however Win4145 does support several specialized measurement modes which require this to be modified.

Section 4: Stop Button

This button allows the user to stop the measurement.

The Data Window

When a new setup is created the spreadsheet is automatically created when a test setup is created. It will begin as a minimized window in the lower left corner of the Win4145 window. To view the data simply double-click the window that has the same name as the test setup.

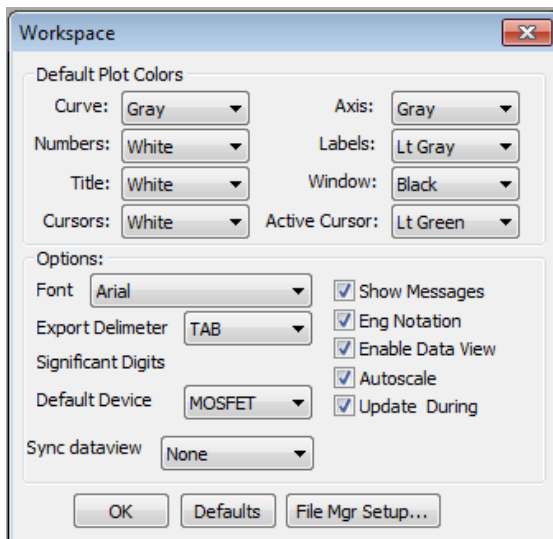


The screenshot shows a window titled "VTH" with a toolbar containing "Clear", "Max", "Min", and "Direct" buttons. A date field displays "08/07/2012 1". Below the toolbar is a table with 7 columns: ID, VG, VT +, GM +, GMMAX +, and TFIT +. The table contains 12 rows of data. The first row has values: 1, 0.0750p, 0.0000, 1.5972, 0.9307p, 20.0000, -0.5888m. The second row has values: 2, 0.1680p, 0.1000, , 1.8787p, , -0.5519m. The third row has values: 3, 0.4507p, 0.2000, , 5.9548p, , -0.5151m. The fourth row has values: 4, 1.3590p, 0.3000, , 0.0192n, , -0.4782m. The fifth row has values: 5, 4.2856p, 0.4000, , 0.0642n, , -0.4414m. The sixth row has values: 6, 0.0142n, 0.5000, , 0.2216n, , -0.4045m. The seventh row has values: 7, 0.0486n, 0.6000, , 0.7988n, , -0.3676m. The eighth row has values: 8, 0.1740n, 0.7000, , 3.0511n, , -0.3308m. The ninth row has values: 9, 0.6588n, 0.8000, , 0.0117u, , -0.2939m. The tenth row has values: 10, 2.5201n, 0.9000, , 0.0458u, , -0.2570m. The eleventh row has values: 11, 9.8193n, 1.0000, , 0.1850u, , -0.2202m. The twelfth row has values: 12, 0.0395, 1.1000, , 0.7299, , -0.1833m.

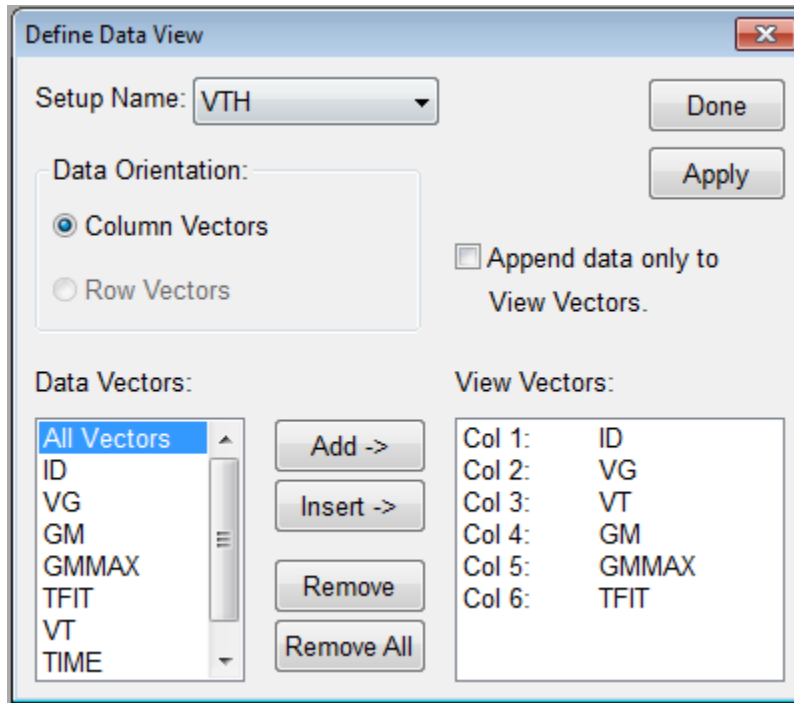
	ID	VG	VT +	GM +	GMMAX +	TFIT +
1	0.0750p	0.0000	1.5972	0.9307p	20.0000	-0.5888m
2	0.1680p	0.1000		1.8787p		-0.5519m
3	0.4507p	0.2000		5.9548p		-0.5151m
4	1.3590p	0.3000		0.0192n		-0.4782m
5	4.2856p	0.4000		0.0642n		-0.4414m
6	0.0142n	0.5000		0.2216n		-0.4045m
7	0.0486n	0.6000		0.7988n		-0.3676m
8	0.1740n	0.7000		3.0511n		-0.3308m
9	0.6588n	0.8000		0.0117u		-0.2939m
10	2.5201n	0.9000		0.0458u		-0.2570m
11	9.8193n	1.0000		0.1850u		-0.2202m
12	0.0395	1.1000		0.7299		-0.1833m

The Data window automatically returns the measured data and displays it. When parameters are extracted the values are also displayed.

Note: Win4145 has a feature named "Enable DataView". To enable or disable this feature select Workspace from the Options menu.



Edit the DataView



The 'Define Data View' dialog box is shown. It has a title bar with a close button. The 'Setup Name' is set to 'VTH'. There are 'Done' and 'Apply' buttons. Under 'Data Orientation', 'Column Vectors' is selected. There is an unchecked checkbox for 'Append data only to View Vectors.'. Under 'Data Vectors', a list contains 'All Vectors', 'ID', 'VG', 'GM', 'GMMAX', 'TFIT', 'VT', and 'TIME'. To the right of this list are buttons for 'Add ->', 'Insert ->', 'Remove', and 'Remove All'. Under 'View Vectors', a list shows 'Col 1: ID', 'Col 2: VG', 'Col 3: VT', 'Col 4: GM', 'Col 5: GMMAX', and 'Col 6: TFIT'.

Col	Vector
Col 1:	ID
Col 2:	VG
Col 3:	VT
Col 4:	GM
Col 5:	GMMAX
Col 6:	TFIT

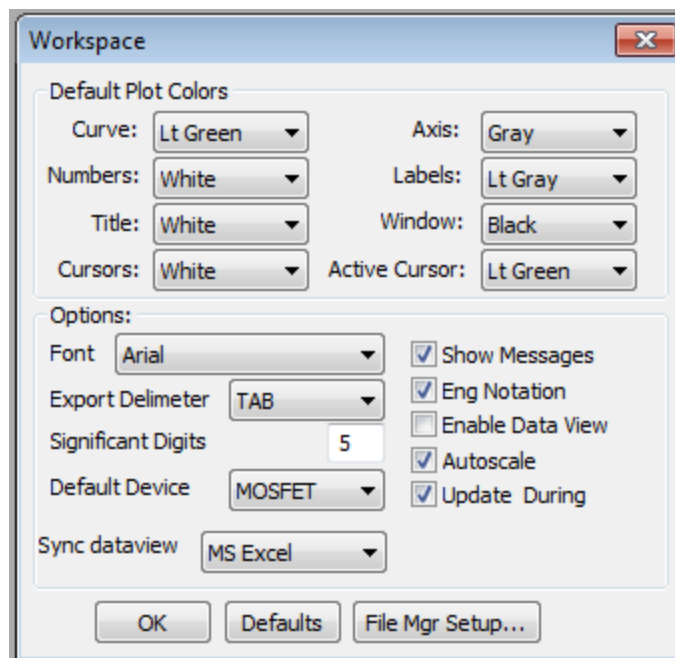
This feature allows the user to select that only data vectors that are chosen be displayed. It also allows the reordering of the data vectors as they appear in the data window. The default behavior is for the DataView to be disabled which displays all vectors for a chosen setup.

Sync the DataView with Microsoft Excel

This feature allows the user to automatically synchronize all DataViews with a Microsoft Excel workbook. The default behavior is for the DataView to be disabled which displays all vectors for each setup in separate tabs of the workbook.

Note: Win4145 has a feature named "Enable DataView". To enable or disable this feature select Workspace from the Options menu.

Note: Win4145 has a feature named "Sync dataview". To enable or disable this feature select Workspace from the Options menu.



While the "Sync DataView" is selected all data will be automatically synced to the Excel spreadsheet. You can create user defined macros to perform further analysis to create custom reports and save out to the file system in .XLS format.

Notice that not only the measured data vectors are synced but also any transforms that have been setup for the raw data.

VTH

Clear Max Min Direct

08/07/2012 15

	ID	VG	GM +	GMMAX +	TFIT +	VTH +
1	0.1087p	0.0000	1.3488p	20.0000	-0.8533m	1.5972
2	0.2435p	0.1000	2.7227p		-0.7999m	
3	0.6532p	0.2000	8.6301p		-0.7465m	
4	1.9696p	0.3000	0.0278n		-0.6931m	
5	6.2109p	0.4000	0.0930n		-0.6396m	
6	0.0206n	0.5000	0.3212n		-0.5862m	
7	0.0704n	0.6000	1.1577n		-0.5328m	
8	0.2521n	0.7000	4.4218n		-0.4794m	
9	0.9548n	0.8000	0.0170u		-0.4259m	
10	3.6524n	0.9000	0.0664u		-0.3725m	
11	0.0142u	1.0000	0.2680u		-0.3191m	
12	0.0573u	1.1000	1.0578u		-0.2657m	

Book1 - Microsoft Excel

Home Insert Page Layout Formulas Data Review View Team

PivotTable Table Picture Charts Hyperlink Text Box Header & Footer WordArt

Tables Illustrations Links Text

A1 fx ID

	A	B	C	D	E	F	G
1	ID	VG	GM +	GMMAX +	TFIT +	VTH +	
2	1.09E-13	0	1.35E-12	20	-0.00085	1.597227	
3	2.44E-13	0.1	2.72E-12		-0.0008		
4	6.53E-13	0.2	8.63E-12		-0.00075		
5	1.97E-12	0.3	2.78E-11		-0.00069		
6	6.21E-12	0.4	9.3E-11		-0.00064		
7	2.06E-11	0.5	3.21E-10		-0.00059		
8	7.04E-11	0.6	1.16E-09		-0.00053		
9	2.52E-10	0.7	4.42E-09		-0.00048		
10	9.55E-10	0.8	1.7E-08		-0.00043		
11	3.65E-09	0.9	6.64E-08		-0.00037		
12	1.42E-08	1	2.68E-07		-0.00032		
13	5.73E-08	1.1	1.06E-06		-0.00027		
14	2.26E-07	1.2	4.01E-06		-0.00021		

VTH Sheet1 Sheet2 Sheet3

Ready 100%

Chapter 5- Plotting Data

Introduction

This Module introduces the plotting tool of the Win4145 software. The plotting tool allows for the graphical analysis of data measured with Win4145.

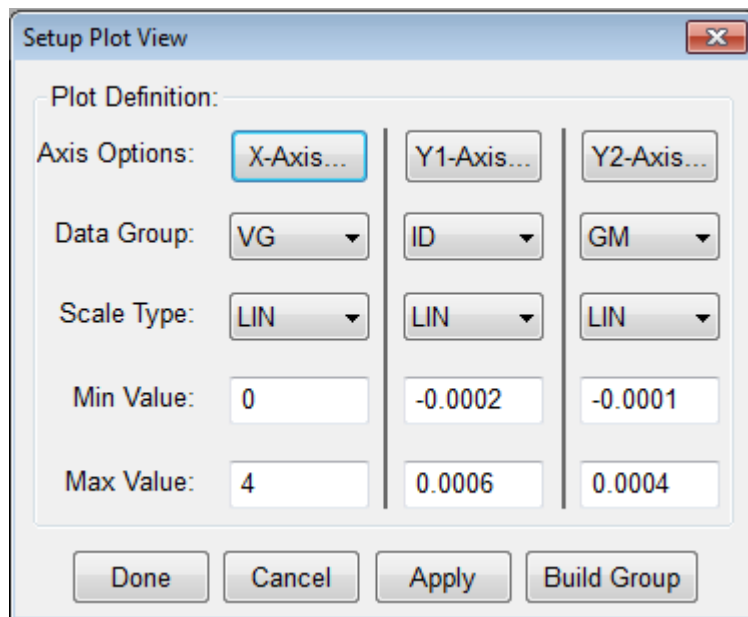
Topics Covered

- Creating a Plot
- Editing a Plot

Creating a Plot

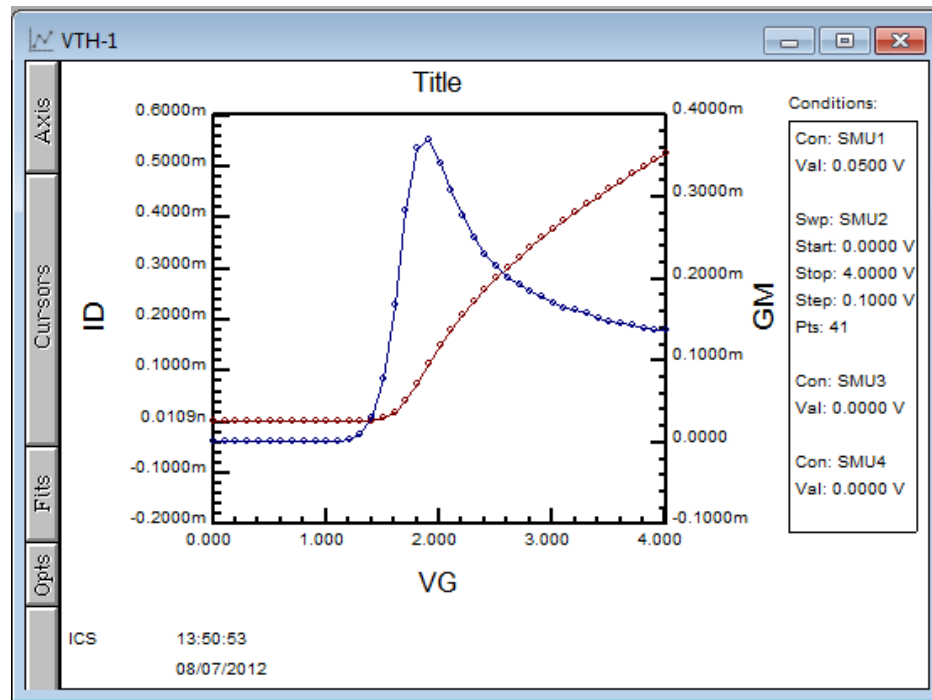
The Metrics Win4145 software uses a custom plot tool to display plots and provide analysis features like read-out cursors and line fits.

To create a new plot:

A screenshot of the 'Setup Plot View' dialog box. It has a title bar with a close button. The main area is titled 'Plot Definition:' and contains three columns of settings. The first column is for the X-Axis, the second for Y1-Axis, and the third for Y2-Axis. Each column has a 'Data Group' dropdown, a 'Scale Type' dropdown, a 'Min Value' text box, and a 'Max Value' text box. At the bottom are four buttons: 'Done', 'Cancel', 'Apply', and 'Build Group'.

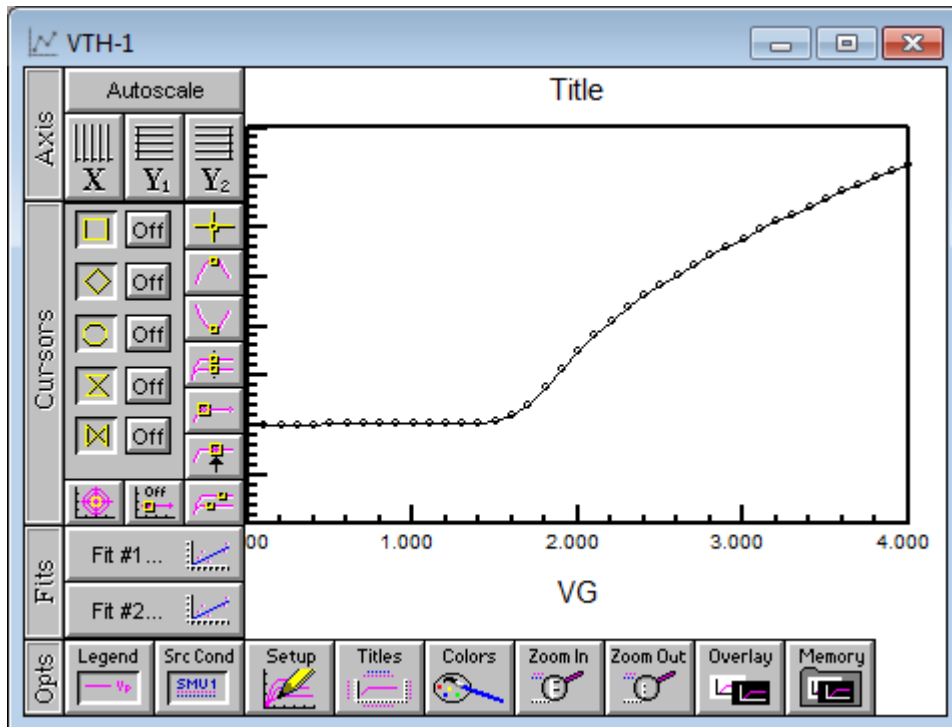
Plot Definition:			
Axis Options:	X-Axis...	Y1-Axis...	Y2-Axis...
Data Group:	VG	ID	GM
Scale Type:	LIN	LIN	LIN
Min Value:	0	-0.0002	-0.0001
Max Value:	4	0.0006	0.0004

1. Click the **Plot** button on the toolbar.
2. Configure the plot.
3. Click the **Done** button and the plot will be created.



Note: The plot is made from whatever data window is currently active. The name of the plot in the Window title is the setup name followed by a dash and a number. Multiple plots can be created from the same data set, the number will just increase.

Editing a Plot



The plot window contains the editing tools for the plot.

1. The Axis button reveals the tools to change the axis from linear to logarithmic and to auto scale the plot.
2. The Cursors button allows the addition and control of cursors on the plot.
3. The Fits button allows the application of curve fits related to the cursors.
4. The Opts button presents several options for adding notes to the plot, overlaying plots, zooming features, and setup changes.

These functions are discussed in great detail within the Win4145 Reference Manual.

Chapter 6- Extracting Data

Introduction

After executing a measurement, Win4145 can extract parameters. Once the procedures are defined, each time the measurement is run the calculations are performed automatically.

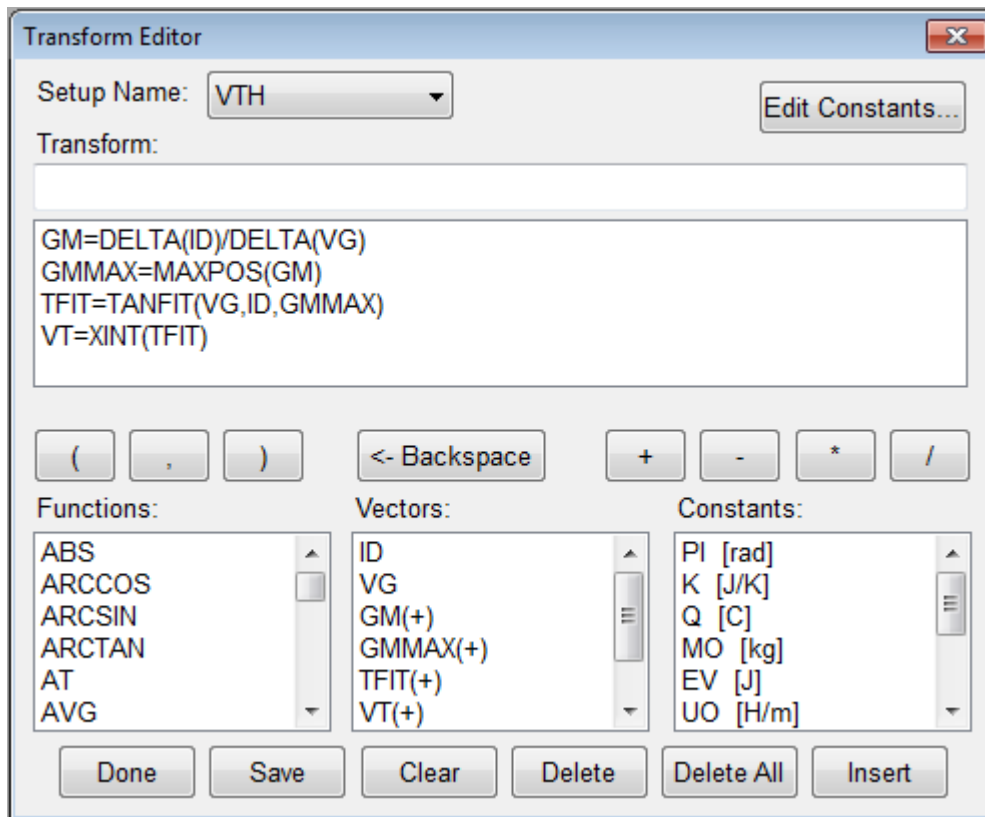
This Module demonstrates how to extract parameters from the raw data using the Transform Editor within Win4145.

Topics Covered

- The Transform Editor
- Defining a Transform
- Sharing Data Between Transforms

The Transform Editor

Calculations are created within the Transform Editor. To open the editor, click the "Transform Editor" button on the Win4145 toolbar.



The Transform Editor contains several areas:

1. Transform Entry Box

The location to enter the transform.

2. Defined Transform List

A list of all transforms defined for this setup.

3. Function List

A predefined functions available for the calculation of parameters.

4. Vector List

A list of the measured and calculated data vectors.

5. Constant List

A list of constants that can be used in calculations.

6. Edit Constant Button

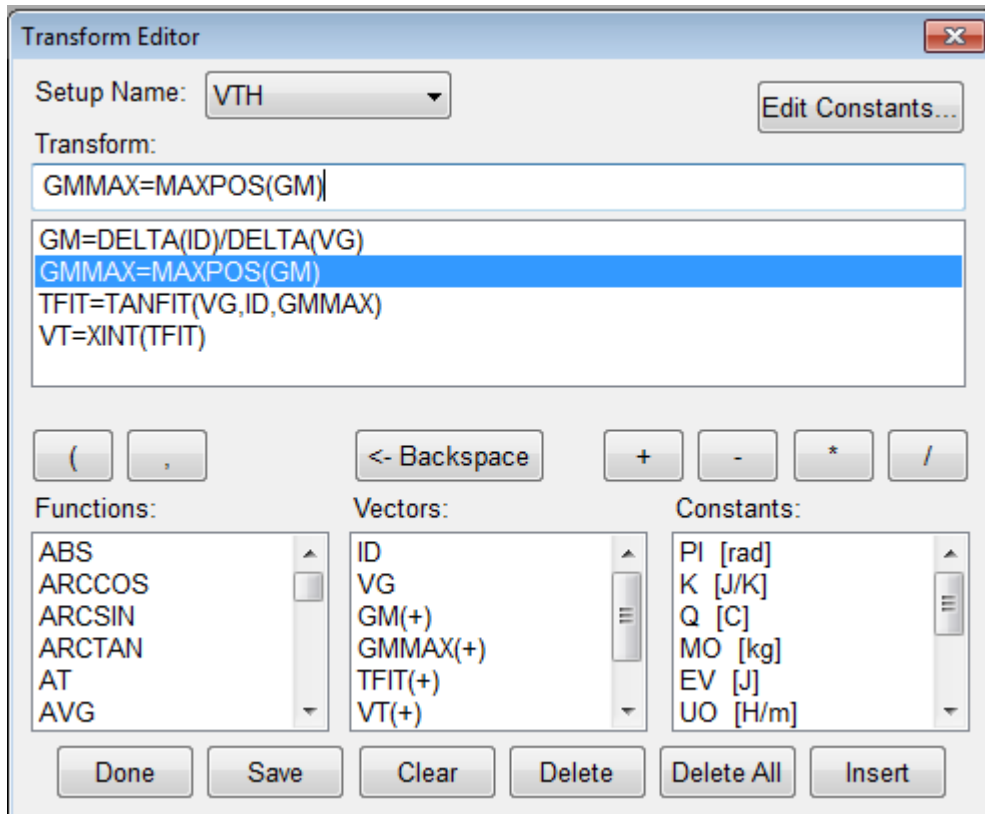
Allows constants to be defined and edited.

7. Action Buttons

Controls for the saving of transforms, deleting of transforms, and exiting the Transform Editor.

Defining a Transform

Calculations are created within the Transform Editor. To open the editor click the "Transform Editor" button on the Win4145 toolbar.



To create a calculation:

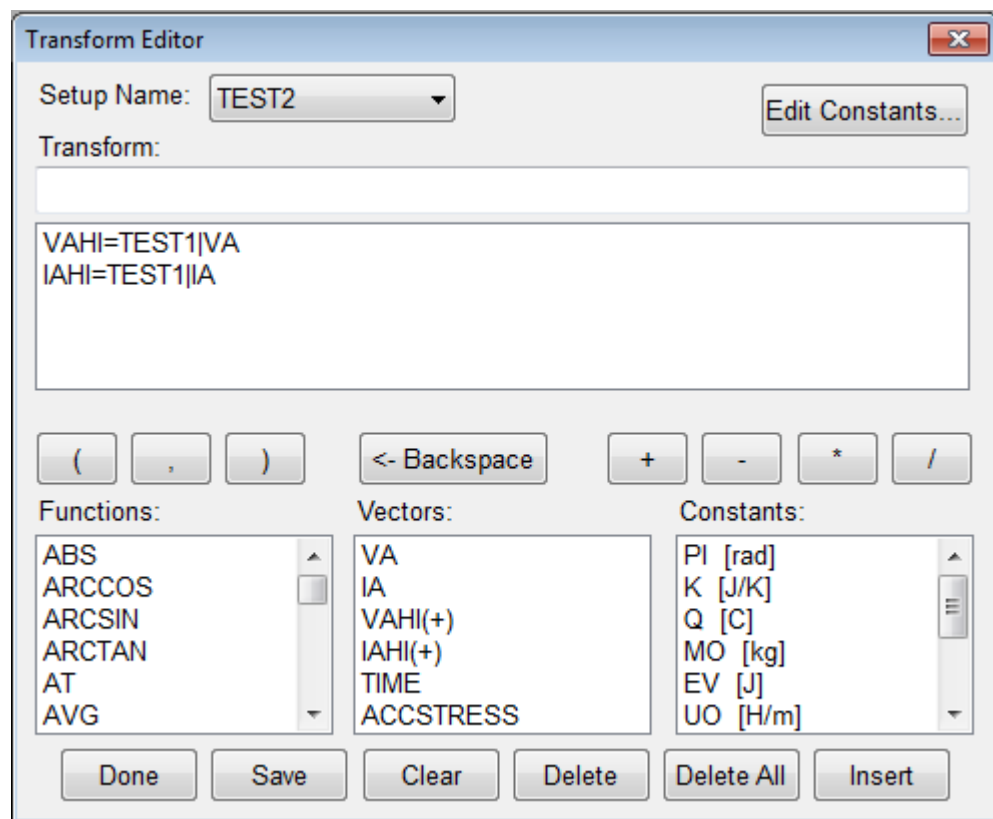
1. Enter the calculation in the "Transform" box. The calculation must be in the form result=function(vector)
2. Click the **Save** button to save the new calculation.
3. Once all calculations have been saved, click the **Done** button.

Sharing Data Between Transforms

Data vectors from one setup can be shared with another setup in the same project file. For instance, if one setup (TEST2) measures the resistance from 0-1 Volts and the second (TEST1) from 1.1-2 Volts the data can be merged to form a full sweep from 0-2 Volts.

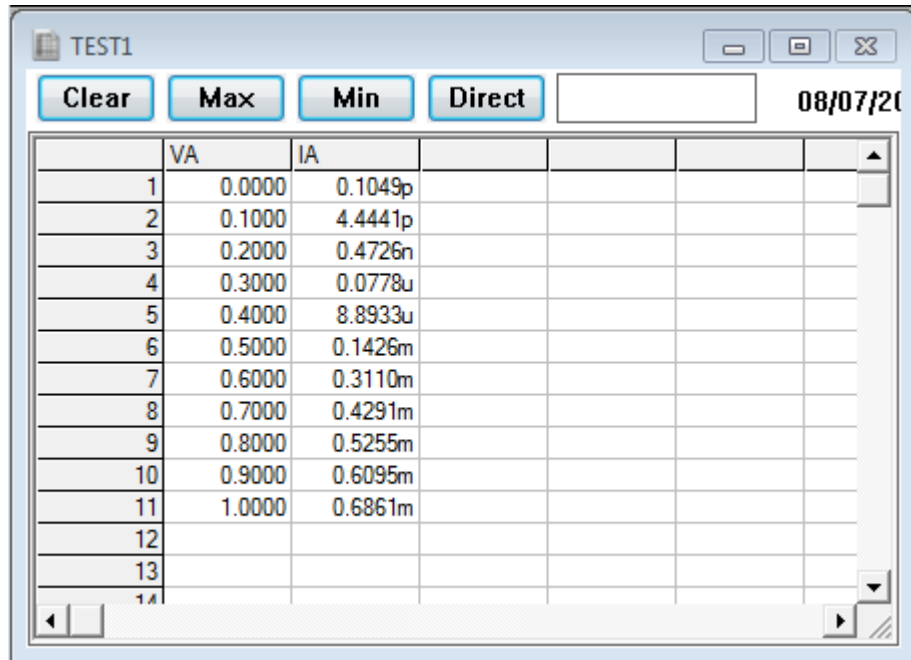
To Share Data:

We must first create two different setups with TEST2 being the sweep from 0-1 Volts and TEST1 being the sweep from 1.1 to 2 Volts.



1. Open the Transform Editor and make sure the setup name is TEST2.
2. Create a new Transform as shown above.
3. Click the **Save** button.

The use of the transform result=setup name|vector name allows the data to be moved from one setup to another.

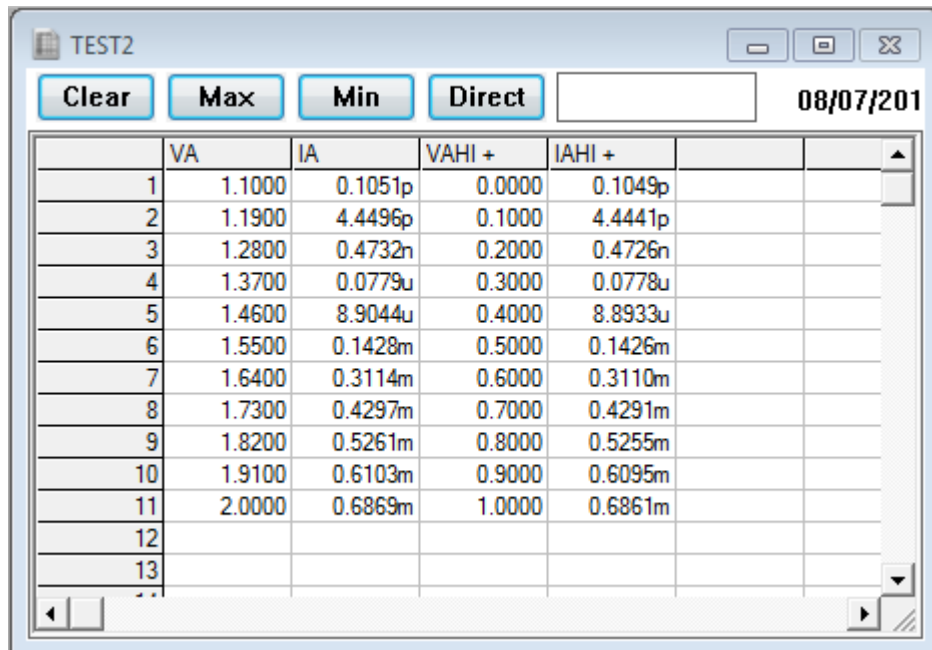


TEST1

Clear Max Min Direct 08/07/201

	VA	IA				
1	0.0000	0.1049p				
2	0.1000	4.4441p				
3	0.2000	0.4726n				
4	0.3000	0.0778u				
5	0.4000	8.8933u				
6	0.5000	0.1426m				
7	0.6000	0.3110m				
8	0.7000	0.4291m				
9	0.8000	0.5255m				
10	0.9000	0.6095m				
11	1.0000	0.6861m				
12						
13						
14						

After applying the transform result=setup name|vector name the data to be from TEST1 is displayed in the data window for TEST2.



TEST2

Clear Max Min Direct 08/07/201

	VA	IA	VAHI +	IAHI +		
1	1.1000	0.1051p	0.0000	0.1049p		
2	1.1900	4.4496p	0.1000	4.4441p		
3	1.2800	0.4732n	0.2000	0.4726n		
4	1.3700	0.0779u	0.3000	0.0778u		
5	1.4600	8.9044u	0.4000	8.8933u		
6	1.5500	0.1428m	0.5000	0.1426m		
7	1.6400	0.3114m	0.6000	0.3110m		
8	1.7300	0.4297m	0.7000	0.4291m		
9	1.8200	0.5261m	0.8000	0.5255m		
10	1.9100	0.6103m	0.9000	0.6095m		
11	2.0000	0.6869m	1.0000	0.6861m		
12						
13						
14						

Chapter 7- Saving Data

Introduction

Metrics Win4145 version 4.1.0 saves the data within the standard Windows File System. This Module covers the data. Where it is stored, how it is stored, and how to retrieve it are covered.

Topics Covered

- Where is the Data?
- Saving a Project

Where is the Data?

Metrics Win4145 version 4.1.0 allows the data to be stored anywhere within the windows file system.

Note: If you want the Win4145 Backup utility to save the data, make sure it is saved within the Metrics\ICS\projects directory.

Saving a Project

The project is a collection of the test method(s) and the data. To save the data simply select **File >> Save As** and select the directory and filename or to save the currently open project simply select the **Save** toolbar icon.

